

# Hitachi Power Tools

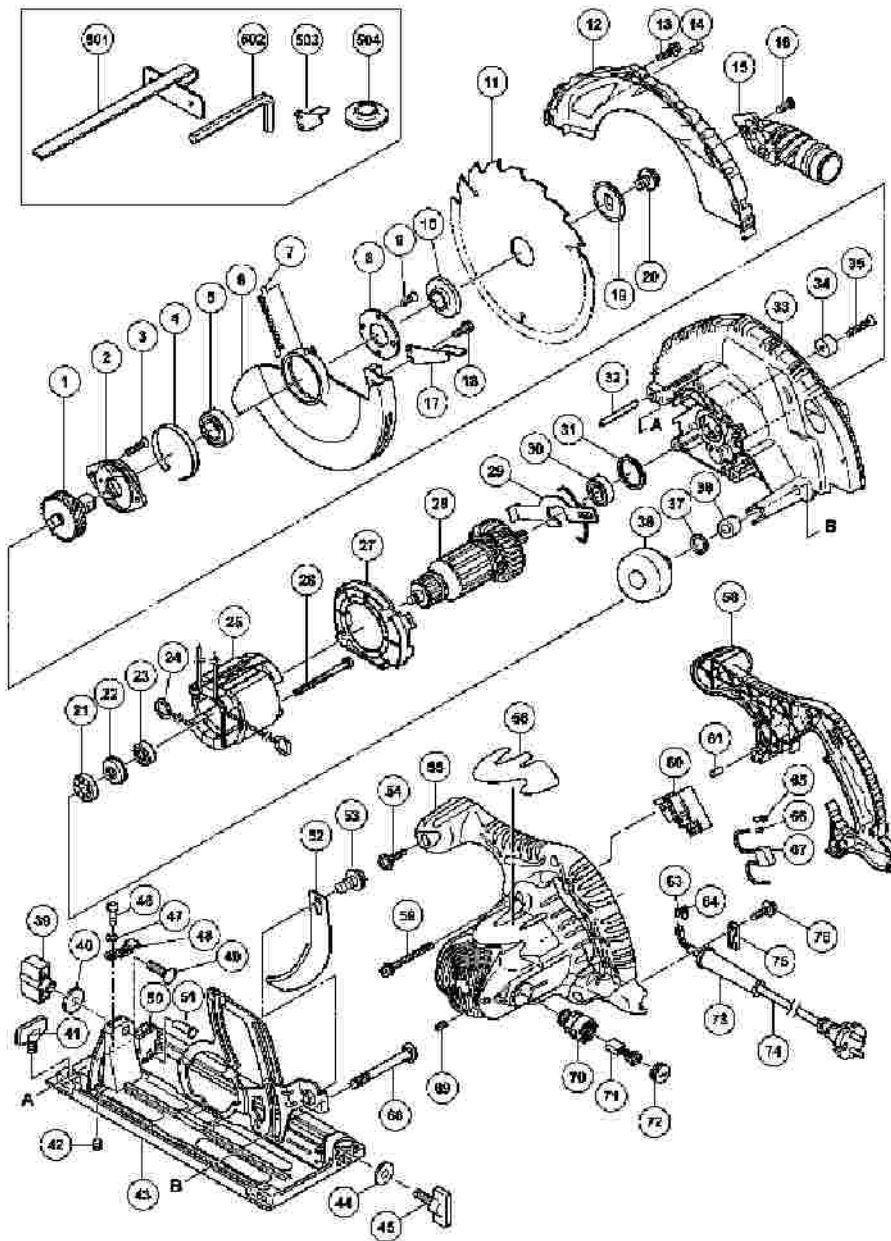
LIST NO. E506

## ELECTRIC TOOL PARTS LIST

■ CIRCULAR SAW  
Model C 7U2

2005 · 8 · 30

(E1)



## C7U2

Pos. Nr.	Art. Nr.	Beschreibung	Stueck	Kommentar	Beschreibung
1	302-988	ZAHNRAD M.WELLE C7U/C7BU	1		SPINDLE AND GEAR SET
2	302-433	LAGERHALTER C6U/BU/C7U/BU/FC6SB/	1		BEARING HOLDER
3	992-013	+SENKKOPFSCHRAUBE M5X14 SELBSTSI.	2		SEAL LOCK FLAT HD. SCREW M5X14
4	961-807	DISTANZBLECH C6U- C8U/C6BU/C7BU/	1		BUSHING
5	600-3VV	KUGELLAGER 6003 VV	1		BALL BEARING 6003VVCMP2L
6	324-661		1		SAFETY COVER
7	303-512	RÜCKHOLFEDER C7U/C7BU	1		RETURN SPRING
8	302-435	LAGERDECKEL DIV.TYPEN	1		BEARING COVER
9	990-430	+SENKKOPFSCHRAUBE M4X10 SELBSTSI.	2		SEAL LOCK FLAT HD. SCREW M4X10
10	302-476	SPANNSCHEIBE (A) C6U- C9U/	1		WASHER (A)
11	324-668		1		TCT SAW BLADE 190MM- D30 HOLE-NT18
12	324-654		1		SAW COVER
13	305-691		4		MACHINE SCREW (W/WASHERS) M4X14 (BLACK)
14			1		MODEL NAME PLATE
15	324-669		1		DUST COLLECTOR
16	324-139		1		SPECIAL BOLT
17	302-464	KNAUF C6U- C9U/C6BU/C7BU/C6DD/	1		KNOB
18	304-043	+KOPFSCHRAUBE M4X10 M.U-SCHEIBE	1		MACHINE SCREW (W/WASHERS) M4X10 (BLACK)
19	302-423	SPANNSCHEIBE (B) C6U/BU/C7U/BU/	1		WASHER (B)
20	324-662		1		HEX. SOCKET HD. BOLT

					M8X15.5
21	325-060		1		RUBBER BUSHING
22	322-089		1		BEARING BUSHING
23	608-VVM	KUGELLAGER 608 VVM	1		BALL BEARING 608VVC2PS2L
24	930-703	KOHLLENHALTERKLEMME DH28Y u.a.	2		BRUSH TERMINAL
25	340-640C		1	INCLUD.24	STATOR ASS'Y 110V
25	340-640E		1	INCLUD.24	STATOR ASS'Y 230V
26	953-174	SCHNEIDSCHRAUBE D5X55	2		HEX. HD. TAPPING SCREW D5X55
27	324-656		1		FAN GUIDE
28	360-727C		1		ARMATURE 110V
28	360-727E		1		ARMATURE 230V
29	324-655		1		LOCK LEVER
30	600-1VV	KUGELLAGER 6001 VV	1		BALL BEARING 6001VVCMP2L
31	958-130	GUMMIRING C6U/C6BU/C7U/C7BU/	1		RUBBER RING
32	949-686	ROLLSTIFT D6X40 (10ST)	1		ROLL PIN D6X40 (10 PCS.)
33	324-653		1	"INCLUD.31,34,35"	GEAR COVER ASS'Y
34	961-729	PUFFER C6U-C9U/C6BU/C7BU/FC6SB/	1		CUSHION
35	949-794	+SENKKOPFSCHRAUBE M6X20 (10ST)	1		FLAT HD. SCREW M6X20 (10 PCS.)
36	324-660		1		KNOB
37	676-531	O-RING (P-7) C6U-C9U/C6BU/C7BU/	1		O-RING (P-7)
38	303-801	DISTANZHÜLSE C6BU/C7BU/C8U/C9U	1		SLEEVE
39	324-658		1		WING NUT M8
40	949-433	UNTERLEGSCHIEBE M8 (10ST)	1		BOLT WASHER M8 (10 PCS.)
41	301-806	FLÜGELSCHRAUBE M6X15	1		WING BOLT M6X15
					SLOTTED HD.

42	302-469	-STIFTSCHRAUBE M6X6 SELBSTSICH.	1		SET SCREW (SEAL LOCK) M6X6
43	324-657		1	"INCLUD.39,40,44- 51"	BASE ASS'Y
44	949-425	UNTERLEGSCHIEBE M6 (10ST)	1		WASHER M6 (10 PCS.)
45	302-459	FLÜGELSCHRAUBE M6X17	1		WING BOLT M6X17
46	949-214	+KOPFSCHRAUBE M4X6 (10ST)	1		MACHINE SCREW M4X6 (10 PCS.)
47	949-453	FEDERSCHIEBE M4 (10ST)	1		SPRING WASHER M4 (10 PCS.)
48	324-659		1		GUIDE PIECE
49	302-457	SCHLOSSCHRAUBE M8X30 C6U-C9U u.a.	1		BOLT (SQUARE) M8X30
50	308-479	SKALENPLATTE C6BU/C7BU/C6DD/	1		BEVEL PLATE
51	308-480	NIETE D6X17 C6U- C8U/C6BU/C7BU/	2		RIVET D6X17
52	324-663		1		RIVING KNIFE
53	324-664		1		HEX. SOCKET HD. BOLT M8X10
54	301-653	SCHNEIDSCHRAUBE D4X20 MIT FLANSCH	5		TAPPING SCREW (W/FLANGE) D4X20 (BLACK)
55	324-665		1	"INCLUD.69,70"	HOUSING ASS'Y
55	324-666		1	"INCLUD.69,70 FOR SAF"	HOUSING ASS'Y
56			1		NAME PLATE
58	324-667		1		HANDLE COVER
59	302-434	+KOPFSCHRAUBE M5X45 M.U-SCHIEBE	3		MACHINE SCREW (W/WASHERS) M5X45 (BLACK)
60	963-756Z	SCHALTER C6U/C7U/CR10V/CR12V u.a.	1		SWITCH (2P PILLAR TYPE) W/SAFETY LOCK
60	302-470	SCHALTER	1	FOR SAF	SWITCH (C) (1P SCREW TYPE)

		C6U/C7U/DC120V			W/O LOCK
61	946-362	LAGERVERRIEGELUNG (DIV.TYPEN)	1		BEARING LOCK
63	981-373	ADERENDHÜLSE (D) DIV.TYPEN	2	FOR CORD	TUBE (D)
64	980-063	KABELSCHUH C7U/CJ65V2/H70SA/G13V	2	FOR CORD	TERMINAL
65	930-804	KABELSCHUH M4.0 (10ST)	2	FOR SAF	TERMINAL M4.0 (10 PCS.)
66	981-373	ADERENDHÜLSE (D) DIV.TYPEN	2	EXCEPT FOR SAF	TUBE (D)
67	930-039	KONDENSATOR C6U-C13U u.a.	1		NOISE SUPPRESSOR
68	316-444	DIAGONAL-SCHRAUBE M8X105 C6BU/7BU	1		DIAGONAL BOLT M8X105
69	938-477	INBUSSTIFTSCHRAUBE M5X8	2		HEX. SOCKET SET SCREW M5X8
70	958-900	KOHLLENHALTER F30A/C6U-C9U u.a.	2		BRUSH HOLDER
71	999-043	KOHLLENBÜRSTEN (PAAR)	2		CARBON BRUSH (1 PAIR)
72	945-161	KOHLLENKAPPE C6U/C7U u.a.	2		BRUSH CAP
73	953-327	KABELKNICKSCHUTZ D8.8 DIV.TYPEN	1		CORD ARMOR D8.8
74	500-234Z	ANSCHLUSSKABEL MIT STECKER	1	(CORD ARMOR D8.8)	CORD
74	500-435Z		1	(CORD ARMOR D8.8) FOR GBR (230V)	CORD
74	500-461Z		1	(CORD ARMOR D8.8) FOR GBR (110V)	CORD
75	937-631	KABELKLEMME DIV.TYPEN	1		CORD CLIP
76	984-750	SCHNEIDSCHRAUBE D4X16 MIT FLANSCH	2		TAPPING SCREW (W/FLANGE) D4X16
501	302-756	PARALLELANSCHLAG C6U/C7U/C6DD	1		GUIDE
502	872-422	INBUSSCHLÜSSEL D6(M8)	1		HEX. BAR WRENCH 6MM
503	303-338		1		KNOB
504	302-443	SPANNSCHEIBE (A) C6U- C9U u.a.	1	FOR FRA	WASHER (A)

505	325-318		1		CASE
601	317-848	FÜHRUNGSLINEAL- ADAPTER KOMPLETT	1	INCLUD.602-607	GUIDE RAIL ADAPTER ASS'Y
602	317-849	SCHIENENSTAB C6BU/U/C7BU/U	1		RAIL BAR
603	317-850	STAB (LANG) C6BU/U/C7BU/U	1		BAR
604	317-851	STAB (KURZ) C6BU/U/C7BU/U	1		BAR
605	301-806	FLÜGELSCHRAUBE M6X15	4		WING BOLT M6X15
606	949-237	+KOPFSCHRAUBE M5X12 (10ST)	2		MACHINE SCREW M5X12 (10 PCS.)
607	949-454	FEDERSCHEIBE M5 (10ST)	2		SPRING WASHER M5 (10 PCS.)