

**Hitachi Power Tools**

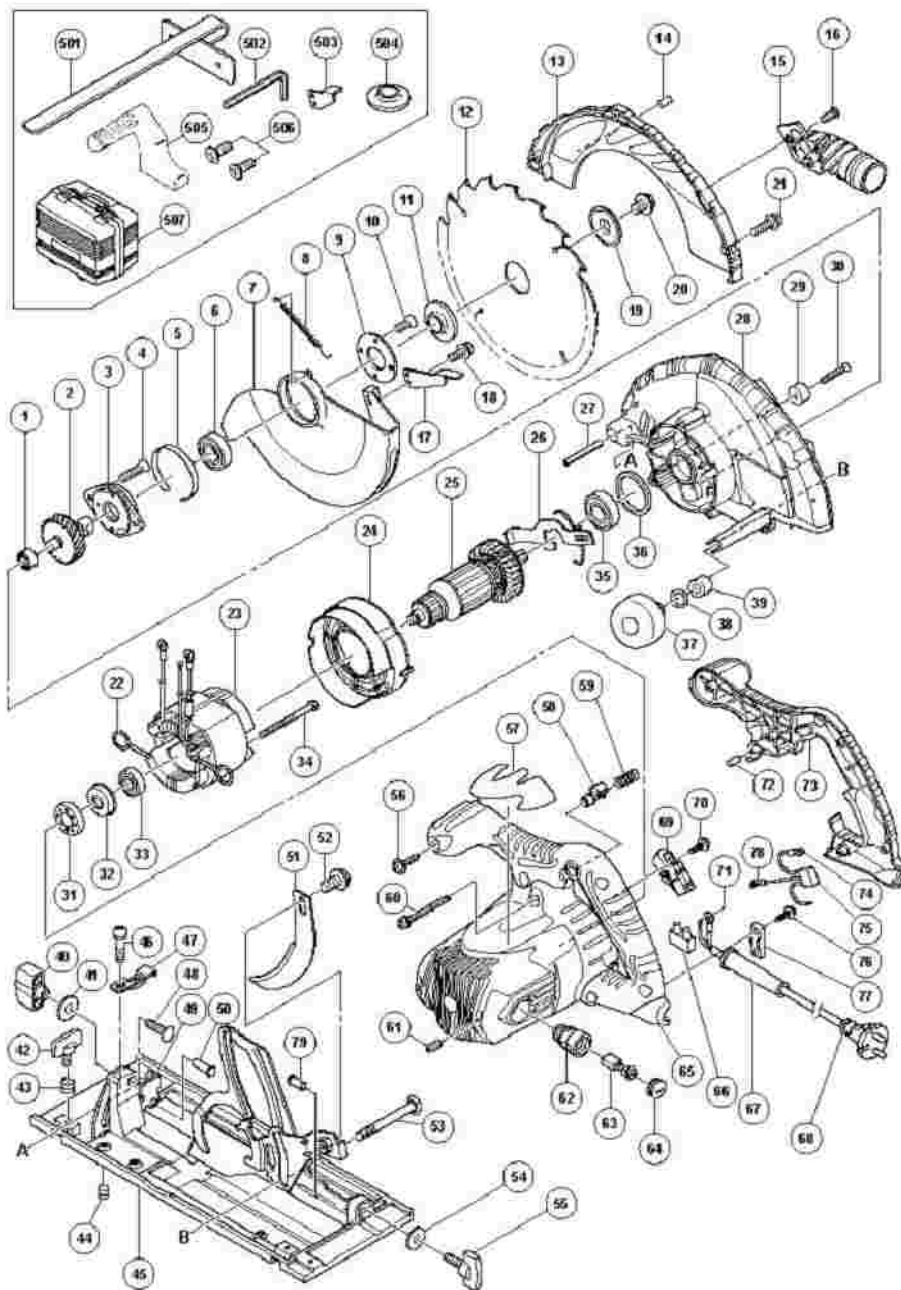
LIST NO. E614

**ELECTRIC TOOL PARTS LIST**

**■ CIRCULAR SAW  
Model C 9BU2**

2006 · 6 · 1

(E1-1)



## C9BU2

Pos. Nr.	Art. Nr.	Beschreibung	Stueck	Kommentar	Beschreibung
1	673-002	NADELLAGER HK 1212 C9U/G23U/UA/UB	1		NEEDLE BEARING (HK1212)
2	303-789	WELLE M. ZAHNRAD C9U	1		SPINDLE AND GEAR SET
3	303-790	LAGERHALTER C9U	1		BEARING HOLDER
4	303-797	+SENKKOPFSCHRAUBE M6X14 SELBSTSI.	2		SEAL LOCK FLAT HD. SCREW M6X14
5	998-887	AUSGLEICHBLECH C9U	1		LINER
6	620-3VV	KUGELLAGER 6203VV	1		BALL BEARING 6203VVCMP52L
7	325-353		1		SAFETY COVER
8	303-805	RÜCKHOLFEDER C9U	1		RETURN SPRING
9	303-804	LAGERDECKEL C9U	1		BEARING COVER
10	992-013	+SENKKOPFSCHRAUBE M5X14 SELBSTSI.	2		SEAL LOCK FLAT HD. SCREW M5X14
11	302-476	SPANNSCHEIBE (A) C6U- C9U/	1		WASHER (A)
12	303-809		1		TCT SAW BLADE 235MM- D15.9 HOLE- NT20
12	303-810	HM- SÄGEBLATT/FLACHZAHN 235X30X20Z	1		TCT SAW BLADE 235MM- D30 HOLE- NT20
13	325-354		1		SAW COVER
14			1		HITACHI LABEL
15	324-669		1		DUST COLLECTOR
16	324-139		1		SPECIAL BOLT
17	302-464	KNAUF C6U- C9U/C6BU/C7BU/C6DD/	1		KNOB
18	304-043	+KOPFSCHRAUBE M4X10 M.U.-SCHEIBE	1		MACHINE SCREW (W/WASHERS) M4X10

					(BLACK)
19	302-423	SPANNSCHEIBE (B) C6U/BU/C7U/BU/	1		WASHER (B)
20	324-662		1		HEX. SOCKET HD. BOLT M8X15.5
21	305-691		4		MACHINE SCREW (W/WASHERS) M4X14 (BLACK)
22	937-623	KOHLLENHALTERKLEMMER	2		BRUSH TERMINAL
23	340-661C		1	INCLUD.22	STATOR ASS'Y 110V
23	340-661E		1	INCLUD.22	STATOR ASS'Y 230V
24	325-352		1		FAN GUIDE
25	360-778C		1		ARMATURE 110V
25	360-778E		1		ARMATURE 230V
26	303-793	ARRETIERHEBEL C9U	1		LOCK LEVER
27	949-884	ROLLSTIFT D8X50 (10ST)	1		ROLL PIN D8X50 (10 PCS.)
28	325-350		1		GEAR COVER
29	961-729	PUFFER C6U- C9U/C6BU/C7BU/FC6SB/	1		CUSHION
30	949-794	+SENKKOPFSCHRAUBE M6X20 (10ST)	1		FLAT HD. SCREW M6X20 (10 PCS.)
31	325-356		1		RUBBER BUSHING
32	325-355		1		BEARING BUSHING
33	600-0VV	KUGELLAGER 6000 VV	1		BALL BEARING 6000VVCMP2L
34	960-251	SCHNEIDSCHRAUBE D5X65 (DIV.TYPEN)	2		HEX. HD. TAPPING SCREW D5X65
35	620-2VV	KUGELLAGER 6202 VV	1		BALL BEARING 6202VVCMP2L
36	303-792	GUMMIRING C9U	1		RUBBER RING
37	324-660		1		KNOB
		O-RING (P-7) C6U-			

38	676-531	C9U/C6BU/C7BU/	1		O-RING (P-7)
39	303-801	DISTANZHÜLSE C6BU/C7BU/C8U/C9U	1		SLEEVE
40	324-658		1		WING NUT M8
41	949-433	UNTERLEGSSCHEIBE M8 (10ST)	1		BOLT WASHER M8 (10 PCS.)
42	301-806	FLÜGELSCHRAUBE M6X15	1		WING BOLT M6X15
43	947-859	FEDER M8/M8V/M12SA/M12V	1		LOCK SPRING
44	302-469	-STIFTSCHRAUBE M6X6 SELBSTSICH.	1		SLOTTED HD. SET SCREW (SEAL LOCK) M6X6
45	325-366		1	"INCLUD.40,41,46- 50,54,55,79"	BASE ASS'Y
46	317-333	MASCHINENSCHRAUBE M4X6	1		MACHINE SCREW (W/SP. WASHER) M4X6
47	324-659		1		GUIDE PIECE
48	302-457	SCHLOSSCHRAUBE M8X30 C6U-C9U u.a.	1		BOLT (SQUARE) M8X30
49	308-481	SCHRÄGPLATTE C8U/C9U	1		BEVEL PLATE
50	308-482	NIETE D6X24 C9U	1		RIVET D6X24
51	303-806	SPALTKEIL C9U	1		RIVING KNIFE
52	324-664		1		HEX. SOCKET HD. BOLT M8X10
53	303-800	DIAGONAL-SCHRAUBE M8 C8U/C9U/C6DD	1		DIAGONAL BOLT M8
54	949-425	UNTERLEGSSCHEIBE M6 (10ST)	1		WASHER M6 (10 PCS.)
55	302-438	FLÜGELSCHRAUBE (A) M6X22	1		WING BOLT (A) M6X20
56	301-653	SCHNEIDSCHRAUBE D4X20 MIT FLANSCH	5		TAPPING SCREW (W/FLANGE) D4X20 (BLACK)
57			1		NAME PLATE
58	325-358		1	EXCEPT FOR SAF	SAFETY LOCK BUTTON
59	325-359		1	EXCEPT FOR SAF	SPRING
					MACHINE SCREW

60	303-796	+KOPFSCHRAUBE M5X40 M.U.-SCHEIBE	3		(W/WASHERS) M5X40 (BLACK)
61	938-477	INBUSSTIFTSCHRAUBE M5X8	2		HEX. SOCKET SET SCREW M5X8
62	983-362	KOHLLENHALTER C8U/9U/DH50SA1 u.a.	2		BRUSH HOLDER
63	999-038	KOHLLENBÜRSTEN (PAAR)	2		CARBON BRUSH (1 PAIR)
64	961-781	KOHLLENKAPPE C6U/CR12V u.a..	2		BRUSH CAP
65	325-362		1	"INCLUD.61,62"	HOUSING ASS'Y
65	325-363		1	"INCLUD.61,62 FOR SAF"	HOUSING ASS'Y
66	938-307	SCHRAUBKLEMME 1- REIHIG DIV.TYPEN	1		PILLAR TERMINAL
67	958-049	KABELKNICKSCHUTZ D8.2 DIV.TYPEN	1		CORD ARMOR D8.2
67	940-778	KABELKNICKSCHUTZ D10.7 DIV.TYPEN	1		CORD ARMOR D10.7
68	500-234Z	ANSCHLUSSKABEL MIT STECKER	1	(CORD ARMOR D8.2)	CORD
68	500-247Z	ANSCHLUSSKABEL MIT STECKER	1	"(CORD ARMOR D10.7) FOR FIN,DEN,SWE,NOR"	CORD
68	500-435Z		1	(CORD ARMOR D8.2) FOR GBR (230V)	CORD
68	500-463Z		1	(CORD ARMOR D10.7) FOR GBR (110V)	CORD
68	500-248Z		1	(CORD ARMOR D10.7) FOR SUI	CORD
69	325-357		1		SWITCH (1P SCREW TYPE)
70	305-720	SCHNEIDSCHRAUBE D4X12	1		TAPPING SCREW (W/FLANGE) D4X12
71	980-063	KABELSCHUH C7U/CJ65V2/H70SA/G13V	1	FOR CORD	TERMINAL
72	946-362	LAGERVERRIEGELUNG (DIV.TYPEN)	1		BEARING LOCK
73	325-351		1		HANDLE COVER

74	980-063	KABELSCHUH C7U/CJ65V2/H70SA/G13V	1		TERMINAL
75	930-039	KONDENSATOR C6U-C13U u.a.	1		NOISE SUPPRESSOR
75	317-491	KONDENSATOR G13YD	1	FOR SUI	NOISE SUPPRESSOR
76	984-750	SCHNEIDSCHRAUBE D4X16 MIT FLANSCH	2		TAPPING SCREW (W/FLANGE) D4X16
77	937-631	KABELKLEMME DIV.TYPEN	1		CORD CLIP
78	961-419Z	KLEMME CM6/CS35B/D13/u.a.	1	FOR SUI	TERMINAL
79	308-480	NIETE D6X17 C6U- C8U/C6BU/C7BU/	1		RIVET D6X17
501	303-888	PARALLELANSCHLAG C9U	1		GUIDE
502	872-422	INBUSSCHLÜSSEL D6(M8)	1		HEX. BAR WRENCH 6MM
503	303-338		1		KNOB
504	302-443	SPANNSCHEIBE (A) C6U- C9U u.a.	1	FOR EUROPE	WASHER (A)
505	303-811	ZUSATZHANDGRIFF C9U	1		SIDE HANDLE
506	949-340	SENKKOPFSCHRAUBE M6X16 (10ST)	2		FLAT HD. SCREW M6X16 (10 PCS.)
507	325-364		1		CASE
601	325-365		1		LONG GUIDE