

Hitachi Power Tools

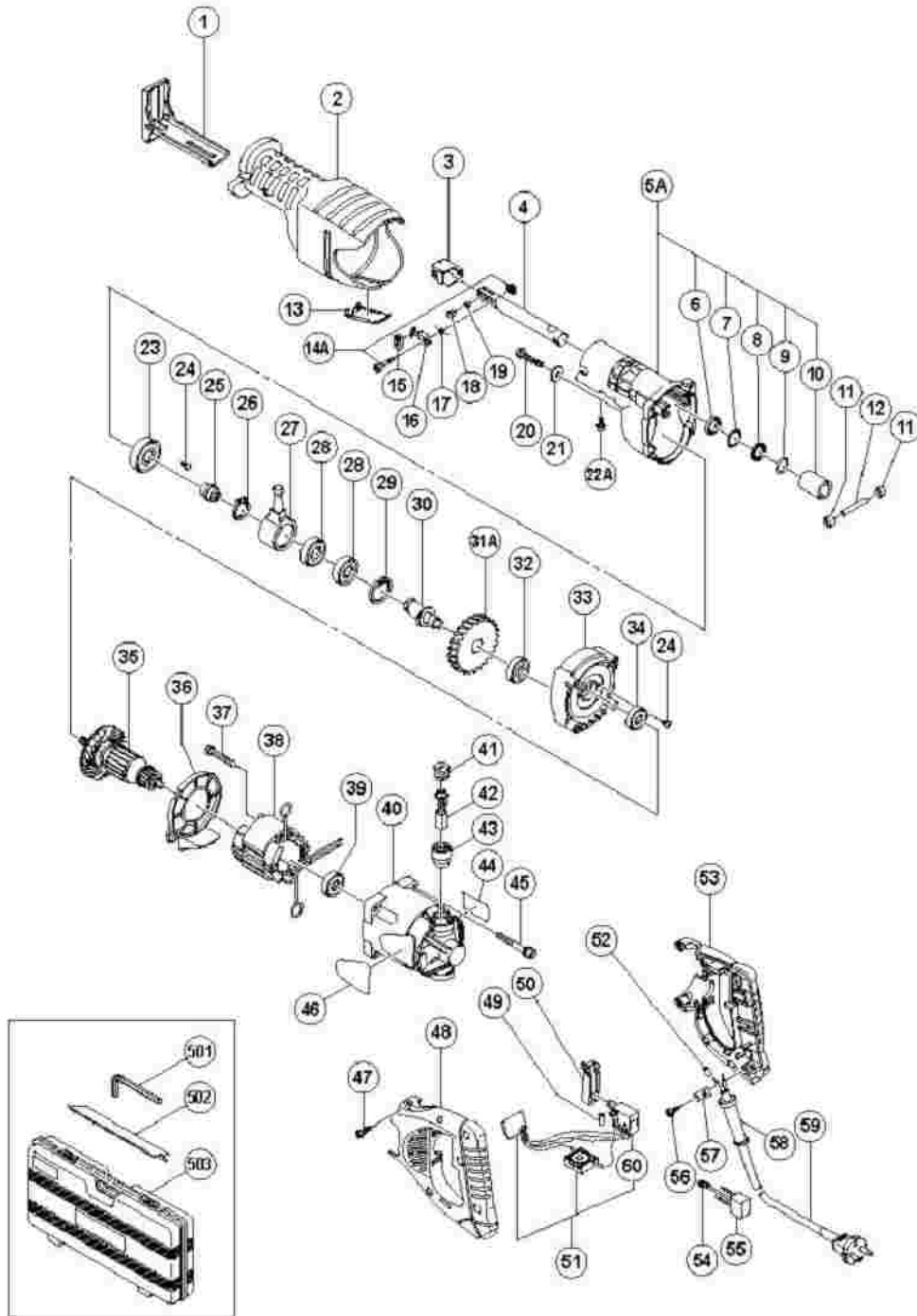
LIST NO. 0792

ELECTRIC TOOL PARTS LIST

■ RECIPROCATING SAW
Model CR 13VC

2006 · 6 · 1

(E1-4)



CR13VC

Pos. Nr.	Art. Nr.	Beschreibung	Stueck	Kommentar	Be
1	321-116		1		BAS
2	321-125		1		FRC (C)
3	321-132		1		BL/ HOI
4	321-120		1		PLU
5	321-123		1		GE/ (B)
6	318-458	FILZDICHTUNG CR13VA	1		FEL
7	321-117		1		WA
8	318-459	V-RING CR13VA	1		V-R
9	321-118		1		O-R
10	321-214		1		ME'
11	321-136		2		SW. ROI
12	318-491	STIFT D6 CR13VA	1		PIN
13	321-126		1		CO'
14	321-133		1		SPE M4
15	321-130		1		CAI
16	321-131		1		LEV
17	321-135		1		SPR
18	321-134		1		HOI (B)
19	318-483	FEDER (B) CR13VA/CR24DV	1		SPR
20	318-451	INBUSSCHRAUBE M6X35 M.FLANSCH	1		NYI (W/ M6)
21	318-452	SCHEIBE (G) CR13VA	1		WA
					HE2

22	996-399	INBUSSCHRAUBE M5X12 M.FLANSCH	1		HD. (W/ M52
23	600-2DD	KUGELLAGER 6002 DD	1		BAI BE/ 600:
24	314-430	-KOPFSCHRAUBE M4X10 SELBSTS.	5		SLC SCF LOC
25	321-129		1		SUE
26	967-261	SICHERUNGSRING D17	1		RET RIN SHA
27	321-121		1		REC PLA
28	600-3VV	KUGELLAGER 6003 VV	2		BAI BE/ 600:
29	939-556	SICHERUNGSRING D35 (INNEN) 10ST	1		RET RIN HOI
30	321-128		1		SEC SHA
31	321-127		1		GE/
32	608-VVM	KUGELLAGER 608 VVM	1		BAI BE/ 608
33	321-124		1		INN (B)
34	600-1VV	KUGELLAGER 6001 VV	1		BAI BE/ 600
35	360-581C		1		ARI 110
35	360-581U		1	"INCLUD.34,39"	ARI ASS
35	360-581E		1		ARI 220
35	360-581F		1		ARI 240
36	321-122		1		FAN
37	961-501	SCHNEIDSCHRAUBE D5X60	2		HE2 TAI SCF
	340-				STA

38	479H		1	INCLUD.37	110°
38	340-479G		1	INCLUD.37	STA 120°
38	340-479E		1	INCLUD.37	STA 220°
38	340-479K		1	INCLUD.37	STA 240°
38	340-479J		1	"INCLUD.37 FOR NZL,FIJ,GBR,EUROPE,NOR,SW	STA 220°
			0	"DEN,FIN"	
39	608-VVM	KUGELLAGER 608 VVM	1		BAI BE/ 608°
40	318-506	MOTORGEHÄUSE (GRÜN) CR13VA	1		HOU (GR
41	945-161	KOHLLENKAPPE C6U/C7U u.a.	2		BRU
42	999-043	KOHLLENBÜRSTEN (PAAR)	2		CAI BRU PAI
43	958-900	KOHLLENHALTER F30A/C6U-C9U u.a.	2		BRU HOU
44			1		NAI
45	307-224	+KOPFSCHRAUBE M5X60 M.U-SCHEIBE	4		MA SCF (W/ M52 (BL
46			1		HIT LAI
47	307-028	SCHNEIDSCHRAUBE D4X25 MIT FLANSCH	5		TAI SCF (W/ D4X (BL
48	321-140		1		HAI
48	321-141		1	"FOR NZL,FIJ,AUS"	HAI
49	981-373	ADERENDHÜLSE (D) DIV.TYPEN	2	"EXCEPT FOR USA,CAN"	TUI
50	318-499	SCHALTERDRÜCKER CR13VA	1		SW. TRI
51	318-505	SCHALTER CR13VA	1		SW.
51	318-817		1	"FOR TPE,GBR (110V)"	SW.

51	318-504		1	"FOR USA,CAN"	SW
51	320-142		1	"FOR NZL,FIJ,AUS"	SW SCF W/S LOC
52	981-373	ADERENDHÜLSE (D) DIV.TYPEN	2		TUI
53	321-139		1		HA
54	938-108	KABELSCHUH M5 (O.ISO) DIV.TYPEN	1	FOR NOISE SUPPRESSOR	TEF
55	994-273	KONDENSATOR DIV.TYPEN	1	"FOR NZL,FIJ,AUS,GBR,EUROPE,NOR,SWE,DEN, FIN	NOI SUF
56	984-750	SCHNEIDSCHRAUBE D4X16 MIT FLANSCH	2		TAI SCF (W/ D4)
57	937-631	KABELKLEMME DIV.TYPEN	1		COI
58	953-327	KABELKNICKSCHUTZ D8.8 DIV.TYPEN	1		COI D8.8
58	938-051	KABELKNICKSCHUTZ D10.1 DIV.TYPEN	1		COI D10
59	500-245Z		1	(CORD ARMOR D8.8)	COI
59	500-201Z		1	"(CORD ARMOR D10.1) FOR TPE,THA,PHI,PER, "BRN,BAN,BOL,TUN,MOZ"	COI
59	500-234Z	ANSCHLUSSKABEL MIT STECKER	1	"(CORD ARMOR D8.8) FOR EUROPE,INA,EGY,TU "NGR,SAU,MAR,VIE"	COI
59	500-247Z	ANSCHLUSSKABEL MIT STECKER	1	"(CORD ARMOR D8.8) FOR NOR,SWE,DEN,FIN"	COI
59	500-439Z		1	"(CORD ARMOR D8.8) FOR NZL,FIJ,AUS"	COI
59	500-423Z		1	"(CORD ARMOR D8.8) FOR SIN,MAL,SRI"	COI
59	500-434Z		1	"(CORD ARMOR D8.8) FOR USA,CAN"	COI
59	500-435Z		1	(CORD ARMOR D8.8) FOR GBR (230V)	COI
59	500-237Z		1	(CORD ARMOR D8.8) FOR GBR (110V)	COI
501	944-458	INBUSSCHLÜSSEL D4 (M5)	1		HE2 WR

502	318-613		1		SAE BL/ NO. P.14
502	318-621		1	"FOR USA,CAN"	SAE BL/ NO. PCS
503	321-142		1		CAS