

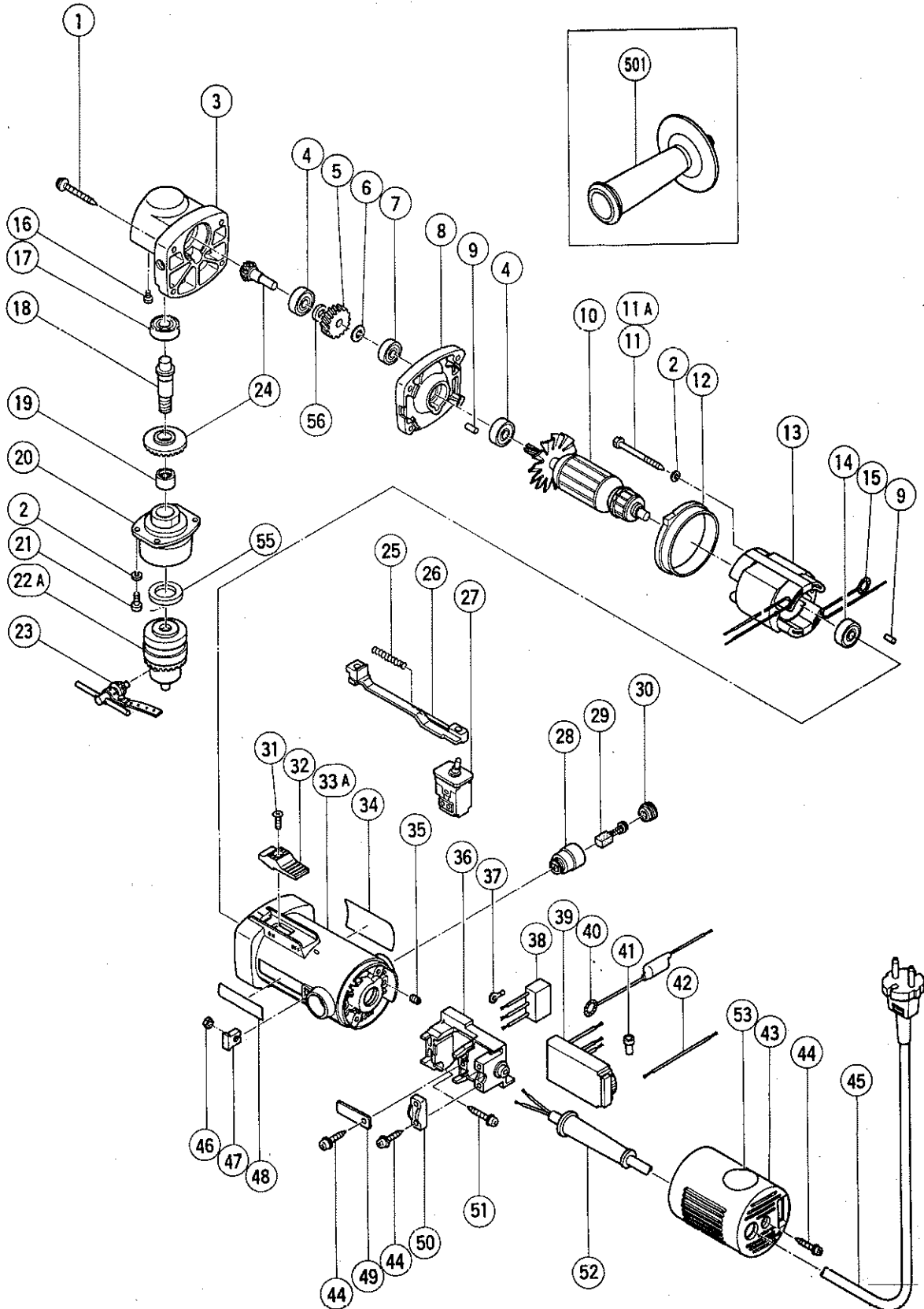
ELECTRIC TOOL PARTS LIST

■ DRILL

1992 · 1 · 16

Model D 10YA

(E4)



PARTS

D 10YA

ITEM NO.	CODE NO.	DESCRIPTION	NO. USED	REMARKS
1	985-419	TAPPING SCREW (W/WASHER) D4X35	4	
2	949-453	SPRING WASHER M4 (10 PCS.)	6	
3	985-401	GEAR COVER	1	
4	608-VVM	BALL BEARING 608VVMC2EPS2L	1	
5	985-410	FIRST GEAR	1	
6	942-828	WASHER (D)	2	
7	626-VVM	BALL BEARING 626VVMC2ERPS2S	1	
8	985-402	INNER COVER	1	
9	931-701	BEARING LOCK	2	
* 10	985-409C	ARMATURE 110V - 127V	1	
* 10	985-409E	ARMATURE 220V - 230V	1	
* 10	985-409F	ARMATURE 240V	1	
* 10	985-409G	ARMATURE 220V	1	FOR FRG,FRA,HOL,DEN,FIN,SWE,AUT
* 10	985-409H	ARMATURE 240V	1	FOR GBR
* 10	985-409J	ARMATURE 110V	1	FOR GBR
11	949-230	MACHINE SCREW M4X50 (10 PCS.)	2	TILL 4.1987
11A	981-421	HEX. HD. TAPPING SCREW D4X55	2	SINCE 5.1987
12	985-400	FAN GUIDE	1	
* 13	985-408C	STATOR ASS'Y 110V - 127V	1	INCLUD.15
* 13	985-408E	STATOR ASS'Y 220V - 230V	1	INCLUD.15
* 13	985-408F	STATOR ASS'Y 240V	1	INCLUD.15
* 13	985-408G	STATOR ASS'Y 220V - 230V	1	INCLUD.15 FOR NZL,FRG,FRA,HOL,DEN,FIN, SWE,AUT,SUI
* 13	985-408K	STATOR ASS'Y 240V	1	INCLUD.15 FOR AUS
* 13	985-408H	STATOR ASS'Y 240V	1	INCLUD.15 FOR GBR
* 13	985-408J	STATOR ASS'Y 110V	1	INCLUD.15 FOR GBR
14	608-VVM	BALL BEARING 608VVMC2EPS2L	2	
15	930-630	BRUSH TERMINAL	1	
16	985-414	FLAT FILLISTER HD. SCREW M4X10	2	
17	629-VVM	BALL BEARING 629VVMC2EPS2L	1	
18	985-403	SPINDLE	1	
19	871-397	NEEDLE BEARING (NTN HK1210)	1	
20	985-404	CHUCK COVER	1	
21	949-216	MACHINE SCREW M4X10 (10 PCS.)	4	
22A	950-292	DRILL CHUCK 10TLRA	1	INCLUD.23
23	980-057	CHUCK WRENCH 10TL2	1	
24	981-463	GEAR	1	
25	963-632	SPRING (B)	1	
26	963-631	SLIDE BAR	1	
27	963-633	SWITCH (2P PILLAR TYPE)	1	
28	937-846	BRUSH HOLDER	2	
29	999-021	CARBON BRUSH (1 PAIR)	2	
30	937-847	BRUSH CAP	2	
31	949-323	FLAT HD. SCREW M4X12 (10 PCS.)	1	
32	938-312	SLIDE KNOB (B)	1	
33A	985-420	HOUSING ASS'Y	1	INCLUD.11A,28,35
34		NAME PLATE	1	
35	963-383	HEX. SOCKET SET SCREW M4X8	2	
36	963-635	SWITCH HOLDER	1	
* 37	959-144	TERMINAL 50051 (10 PCS.)	1	FOR NZL,GBR,FRG,FRA,DEN,SWE,HOL,FIN, AUT,SUI

*: ALTERNATIVE PARTS

