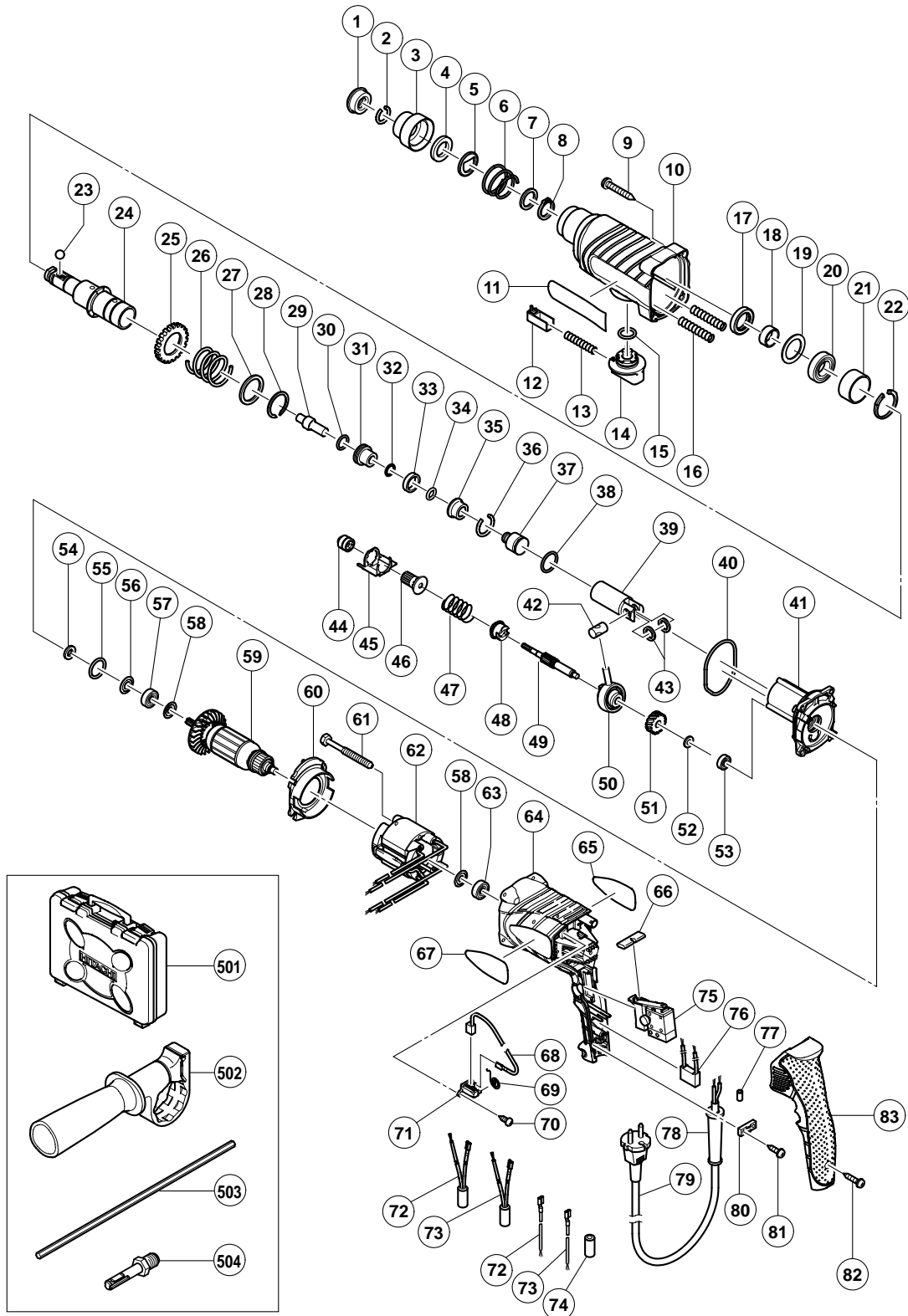


## ELECTRIC TOOL PARTS LIST

■ ROTARY HAMMER  
Model DH 24PC2

2004 • 5 • 30

(E1)



**PARTS**

DH 24PC2

ITEM NO.	CODE NO.	DESCRIPTION	NO. USED	REMARKS
1	306-345	FRONT CAP	1	
2	306-340	STOPPER RING	1	
3	322-809	GRIP	1	
4	322-810	BALL HOLDER	1	
5	322-811	HOLDER PLATE	1	
6	322-812	HOLDER SPRING	1	
7	984-118	WASHER (B)	1	
8	939-547	RETAINING RING FOR D20 SHAFT (10 PCS.)	1	
9	301-654	TAPPING SCREW (W/FLANGE) D5X35	4	
10	323-178	GEAR COVER	1	
11		HITACHI LABEL (A)	1	
12	322-789	PUSHING BUTTON	1	
13	317-223	PUSHING SPRING	1	
14	323-179	CHANGE LEVER	1	
15	878-885	O-RING (S-18)	1	
16	317-238	SPRING (B)	2	
17	307-688	OIL SEAL	1	
18	322-815	SLEEVE	1	
19	323-232	FELT PACKING (B)	1	
20	690-4DD	BALL BEARING 6904DDPS2L	1	
21	322-819	SLEEVE (A)	1	
22	322-813	RETAINING RING 37MM	1	
23	959-156	STEEL BALL D7.0 (10 PCS.)	1	
24	323-184	CYLINDER	1	
25	323-185	SECOND GEAR	1	
26	317-233	SPRING (A)	1	
27	317-234	WASHER (A)	1	
28	317-235	RETAINING RING D30	1	
29	322-803	SECOND HAMMER	1	
30	944-486	O-RING (1AP-20)	1	
31	322-804	HAMMER HOLDER	1	
32	322-802	O-RING (B)	1	
33	322-805	DAMPER (A)	1	
34	322-808	O-RING (C)	1	
35	322-806	DAMPER HOLDER	1	
36	322-807	STOPPER RING	1	
37	322-801	STRIKER	1	
38	322-834	O-RING (I.D.16)	1	
39	322-800	PISTON	1	
40	322-793	O-RING (I.D.66.5)	1	
41	322-792	INNER COVER	1	
42	322-798	PISTON PIN	1	
43	322-799	WASHER (C)	2	
44	323-249	PINION SLEEVE	1	
45	318-522	LOCK PLATE	1	
46	323-181	SECOND PINION	1	
47	323-182	CLUTCH SPRING	1	
48	323-183	CLUTCH	1	
49	323-180	SECOND SHAFT	1	
50	306-990	RECIPROCATING BEARING	1	
51	322-797	FIRST GEAR	1	

## PARTS

DH 24PC2

ITEM NO.	CODE NO.	DESCRIPTION	NO. USED	REMARKS
52	301-663	SPACER	1	
53	626-VVM	BALL BEARING 626VVC2PS2L	1	
54	322-816	FELT PACKING	1	
55	876-796	O-RING (P-22)	1	
56	322-818	PACKING WASHER	1	
57	608-DDM	BALL BEARING 608DDC2PS2L	1	
58	982-631	WASHER (A)	2	
* 59	360-648U	ARMATURE ASS'Y 110V-120V	1	INCLUD. 57, 58, 63
* 59	360-648E	ARMATURE 220V-230V	1	
* 59	360-648F	ARMATURE 240V	1	
60	322-791	FAN GUIDE	1	
61	981-421	HEX. HD. TAPPING SCREW D4X55	2	
* 62	340-581C	STATOR 110V-120V	1	
* 62	340-581E	STATOR 220V-230V	1	
* 62	340-581F	STATOR 240V	1	
63	608-VVM	BALL BEARING 608VVC2PS2L	1	
64	322-832	HOUSING	1	
65		NAME PLATE	1	
66	322-790	PUSHING BUTTON	1	
67		HITACHI LABEL	1	
68	999-088	CARBON BRUSH (1 PAIR)	2	
69	308-536	SPRING	2	
70	306-945	TAPPING SCREW D3X10	4	
71	322-838	BRUSH HOLDER	2	
* 72	322-826	INTERNAL WIRE (BROWN)	1	
* 72	322-827	CHOKE COIL (BROWN)	1	FOR NZL, AUS, GBR (230V), FIN, SUI, ESP, AUT
* 72	322-821	INTERNAL WIRE (BROWN)	1	FOR VEN, USA, CAN
* 72	322-828	CHOKE COIL (BROWN)	1	FOR GBR (110V)
* 73	322-829	INTERNAL WIRE (BLUE)	1	
* 73	322-830	CHOKE COIL (BLUE)	1	FOR NZL, AUS, GBR (230V), FIN, SUI, ESP, AUT
* 73	322-822	INTERNAL WIRE (BLUE)	1	FOR VEN, USA, CAN
* 73	322-831	CHOKE COIL (BLUE)	1	FOR GBR (110V)
74	322-823	SUPPORT (B)	2	
* 75	322-825	SWITCH (B)	1	
* 75	322-820	SWITCH (A)	1	FOR VEN, USA, CAN, GBR (110V)
* 76	930-039	NOISE SUPPRESSOR	1	EXCEPT FOR SYR, VEN, KUW, USA, CAN, SIN, HKG
* 77	981-373	TUBE (D)	2	FOR CORD
* 78	953-327	CORD ARMOR D8.8	1	
* 78	938-051	CORD ARMOR D10.1	1	
* 79	500-245Z	CORD	1	(CORD ARMOR D10.1)
* 79	500-393Z	CORD	1	(CORD ARMOR D10.1) FOR VEN
* 79	500-424Z	CORD	1	(CORD ARMOR D8.8) FOR KUW, SIN
* 79	500-390Z	CORD	1	(CORD ARMOR D8.8) FOR EUROPE
* 79	500-408Z	CORD	1	(CORD ARMOR D8.8) FOR NZL, AUS
* 79	500-446Z	CORD	1	(CORD ARMOR D8.8) FOR GBR (230V)
* 79	500-454Z	CORD	1	(CORD ARMOR D8.8) FOR GBR (110V)
* 79	500-391Z	CORD	1	(CORD ARMOR D8.8) FOR SUI
* 79	500-249Z	CORD	1	(CORD ARMOR D8.8) FOR USA, CAN
* 79	500-440Z	CORD	1	(CORD ARMOR D8.8) FOR HKG
80	937-631	CORD CLIP	1	
81	984-750	TAPPING SCREW (W/FLANGE) D4X16	2	



## STANDARD ACCESSORIES

DH 24PC2

ITEM NO.	CODE NO.	DESCRIPTION	NO. USED	REMARKS	
501	323-310	CASE	1		
502	303-659	SIDE HANDLE	1		
503	303-709	DEPTH GAUGE	1		
504	303-624	CHUCK ADAPTER (D) (SDS PLUS)	1	FOR AUS	

## OPTIONAL ACCESSORIES

ITEM NO.	CODE NO.	DESCRIPTION	NO. USED	REMARKS	
601	980-927	GREASE FOR HAMMER.HAMMER DRILL (500G)	1		
602	981-840	GREASE (A) FOR HAMMER.HAMMER DRILL (30G)	1		
603	306-885	DUST COLLECTOR (B) ASS'Y	1	INCLUD. 604	
604	306-910	SOCKET ADAPTER (B)	1		
605	971-787	DUST CUP	1		
606	306-910	SOCKET ADAPTER (B)	1		
607	931-844	STOPPER	1		
608	321-813	DRILL CHUCK 13VLD-D	1		
609	303-334	CHUCK HANDLE	1		
610	971-511Z	+ DRIVER BIT (A) NO.2 25L	1		
611	971-512Z	+ DRIVER BIT (A) NO.3 25L	1		
612	944-477	COTTER	1		
613	982-684	CENTER PIN (A) 109L FOR CORE BIT D32-38	1		
614	982-685	CENTER PIN (B) 104L FOR CORE BIT D45-90	1		
615	982-672	CORE BIT (A) 25MM	1		
616	982-673	CORE BIT (A) 29MM	1		
617	982-674	CORE BIT (A) 32MM	1	INCLUD. 618	
618	982-686	GUIDE PLATE (FOR CORE BIT 32MM)	1		
619	982-675	CORE BIT (A) 35MM	1	INCLUD. 620	
620	982-687	GUIDE PLATE (FOR CORE BIT 35MM)	1		
621	982-676	CORE BIT (A) 38MM	1	INCLUD. 622	
622	982-688	GUIDE PLATE (FOR CORE BIT 38MM)	1		
623	982-677	CORE BIT (B) 45MM	1	INCLUD. 624	
624	982-689	GUIDE PLATE (FOR CORE BIT 45MM)	1		
625	982-678	CORE BIT (B) 50MM	1	INCLUD. 626	
626	982-690	GUIDE PLATE (FOR CORE BIT 50MM)	1		
627	971-794	ANCHOR SETTING ADAPTER A W1/4" (MANUAL)	1		
628	971-795	ANCHOR SETTING ADAPTER A W5/16" (MANUAL)	1		
629	971-796	ANCHOR SETTING ADAPTER A W3/8" (MANUAL)	1		
630	971-797	ANCHOR SETTING ADAPTER A W1/2" (MANUAL)	1		
631	971-798	ANCHOR SETTING ADAPTER A W5/8" (MANUAL)	1		

**OPTIONAL ACCESSORIES**

DH 24PC2

ITEM NO.	CODE NO.	DESCRIPTION	NO. USED	REMARKS	
632	971-799	ANCHOR SETTING ADAPTER B W1/4" (MANUAL)	1		
633	971-800	ANCHOR SETTING ADAPTER B W5/16" (MANUAL)	1		
634	971-801	ANCHOR SETTING ADAPTER B W3/8" (MANUAL)	1		
635	971-802	ANCHOR SETTING ADAPTER B W1/2" (MANUAL)	1		
636	971-803	ANCHOR SETTING ADAPTER B W5/8" (MANUAL)	1		
637	944-460	TAPER SHANK DRILL BIT D11X100	1		
638	944-461	TAPER SHANK DRILL BIT D12.3X110	1		
639	993-038	TAPER SHANK DRILL BIT D12.7X110	1		
640	944-462	TAPER SHANK DRILL BIT D14.3X110	1		
641	944-500	TAPER SHANK DRILL BIT D14.5X110	1		
642	944-463	TAPER SHANK DRILL BIT D17.5X120	1		
643	944-464	TAPER SHANK DRILL BIT D21.5X140	1		
644	320-859	SYRINGE (BLOW-OUT BULB TYPE)	1		
645	303-046	BULL POINT (SDS+) 250MM (ROUND SHANK TYPE)	1		
646	303-044	CHEMICAL ANCHOR ADAPTER (SDS+)12.7MMX90L	1		
647	303-045	CHEMICAL ANCHOR ADAPTER (SDS+) 19.0MMX100L	1		
648	302-976	ANCHOR SETTING ADAPTER A (SDS+) W1/4X260L	1		
649	302-975	ANCHOR SETTING ADAPTER A (SDS+) W5/16X260L	1		
650	303-621	ANCHOR SETTING ADAPTER A (SDS+) W3/8X160L	1		
651	302-974	ANCHOR SETTING ADAPTER A (SDS+) W3/8X260L	1		
652	302-979	ANCHOR SETTING ADAPTER B (SDS+) W1/4X260L	1		
653	302-978	ANCHOR SETTING ADAPTER B (SDS+) W5/16X260L	1		
654	303-622	ANCHOR SETTING ADAPTER B (SDS+) W3/8X160L	1		
655	302-977	ANCHOR SETTING ADAPTER B (SDS+) W3/8X260L	1		
656	303-332	HAMMER DRILL CHUCK SET 13MM	1	INCLUD. 609, 657	
657	303-335	RUBBER CAP	1		
658	303-617	TAPER SHANK ADAPTER (SDS PLUS) NO.1	1		
659	303-618	TAPER SHANK ADAPTER (SDS PLUS) NO.2	1		
660	303-619	A-TAPER SHANK ADAPTER (SDS PLUS)	1		
661	303-620	B-TAPER SHANK ADAPTER (SDS PLUS)	1		
662	303-627	CORE BIT SHANK (SDS PLUS) 45-90MM 300L	1		
663	303-625	CORE BIT SHANK (SDS PLUS) 25-38MM 105L	1		
664	303-626	CORE BIT SHANK (SDS PLUS) 25-38MM 300L	1		
665	303-624	CHUCK ADAPTER (D) (SDS PLUS)	1		
666	321-825	DRILL CHUCK AND ADAPTER SET	1	INCLUD. 667, 668	
667	303-623	CHUCK ADAPTER (G) (SDS PLUS)	1		
668	321-814	DRILL CHUCK 13VLRB-D	1	INCLUD. 609, 669	
669	995-344	FLAT HD. SCREW (A) (LEFT HAND) M6X25	1		
670	306-369	DRILL BIT (SLENDER SHAFT) D3.4X90	1		
671	306-368	DRILL BIT (SLENDER SHAFT) D3.5X90	1		
672	306-370	ADAPTER FOR SLENDER SHAFT (SDS PLUS)	1		
673	930-515	CHUCK WRENCH 10G	1		
674	308-471	GREASE FOR HAMMER.HAMMER DRILL (70G)	1		