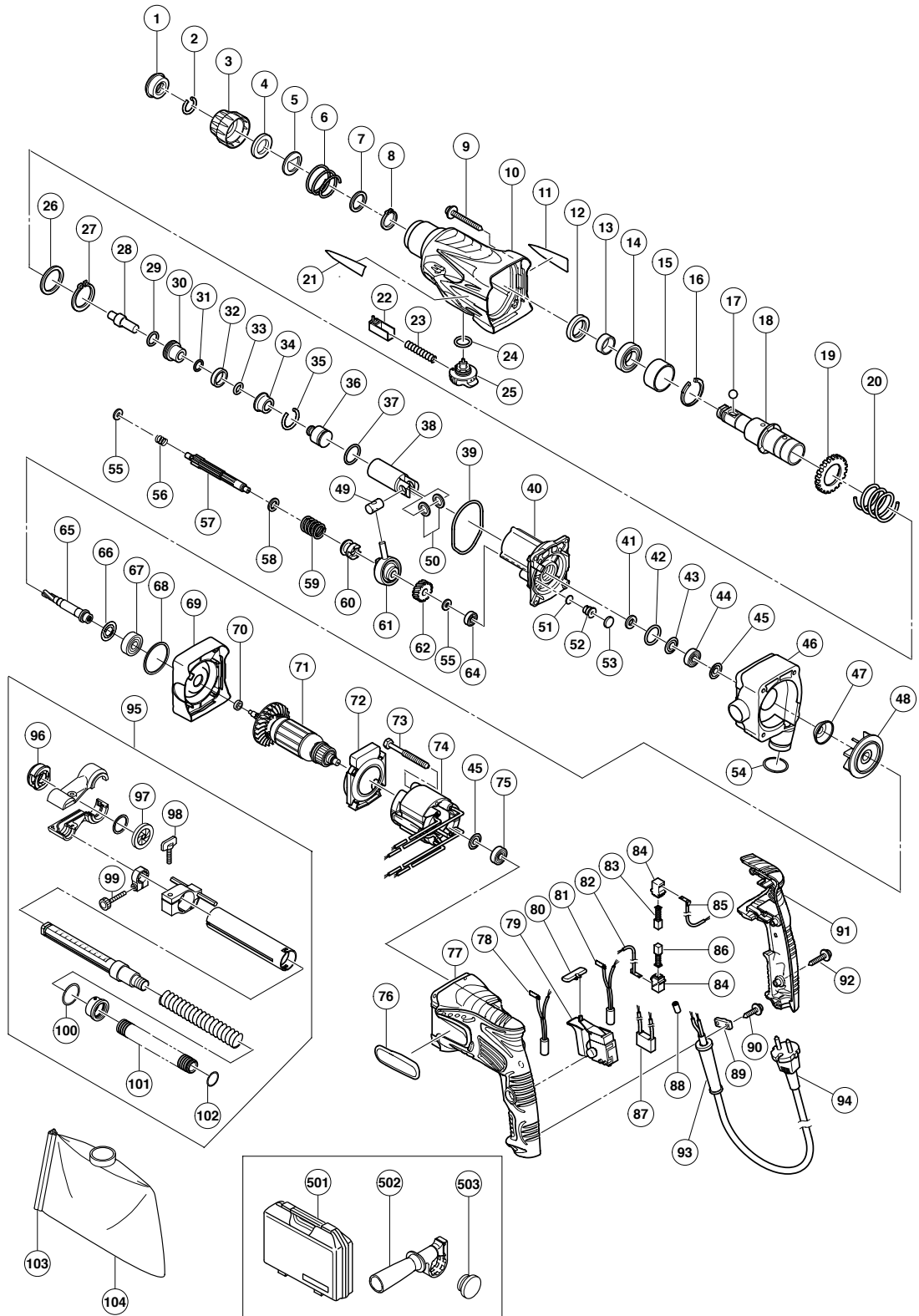


ELECTRIC TOOL PARTS LIST

■ ROTARY HAMMER
Model DH 24PD3

2005 · 9 · 15
(E1)



PARTS

DH 24PD3

ITEM NO.	CODE NO.	DESCRIPTION	NO. USED	REMARKS
1	306-345	FRONT CAP	1	
2	306-340	STOPPER RING	1	
3	324-527	GRIP	1	
4	324-528	BALL HOLDER	1	
5	324-526	HOLDER PLATE	1	
6	322-812	HOLDER SPRING	1	
7	984-118	WASHER (B)	1	
8	939-547	RETAINING RING FOR D20 SHAFT (10 PCS.)	1	
9	302-210	TAPPING SCREW (W/FLANGE) D5X90	4	
10	324-546	GEAR COVER	1	
11		NAME PLATE	1	
12	307-688	OIL SEAL	1	
13	322-815	SLEEVE	1	
14	690-4DD	BALL BEARING 6904DDPS2L	1	
15	324-522	SLEEVE (A)	1	
16	948-310	RETAINING RING FOR D30 SHAFT	1	
17	959-156	STEEL BALL D7.0 (10 PCS.)	1	
18	322-814	CYLINDER	1	
19	301-677	SECOND GEAR	1	
20	301-678	SPRING (A)	1	
21		HITACHI LABEL	1	
22	324-530	PUSHING BUTTON	1	
23	317-223	PUSHING SPRING	1	
24	878-885	O-RING (S-18)	1	
25	324-951	CHANGE LEVER	1	
26	301-679	WASHER (A)	1	
27	322-813	RETAINING RING 37MM	1	
28	324-525	SECOND HAMMER	1	
29	944-486	O-RING (1AP-20)	1	
30	324-524	DAMPER HOLDER	1	
31	322-802	O-RING (B)	1	
32	322-805	DAMPER (A)	1	
33	322-808	O-RING (C)	1	
34	324-523	HAMMER HOLDER	1	
35	322-807	STOPPER RING	1	
36	324-535	STRIKER	1	
37	322-834	O-RING (I.D. 16)	1	
38	324-534	PISTON	1	
39	322-793	O-RING (I.D. 66.5)	1	
40	324-542	INNER COVER ASS'Y	1	INCLUD. 51-53
41	322-816	FELT PACKING	1	
42	876-796	O-RING (P-22)	1	
43	322-818	PACKING WASHER	1	
44	608-DDM	BALL BEARING 608DDC2PS2L	1	
45	982-631	WASHER (A)	2	
46	325-152	CASING (B)	1	
47	302-113	SEAL PLATE	1	
48	302-111	DUST FAN	1	
49	322-798	PISTON PIN	1	
50	322-799	WASHER (C)	2	
51	324-543	FELT PACKING (A)	1	

PARTS

DH 24PD3

ITEM NO.	CODE NO.	DESCRIPTION	NO. USED	REMARKS
52	324-545	VALVE	1	
53	324-544	FELT PACKING (B)	1	
54	302-371	O-RING	1	
55	322-795	SPACER	2	
56	322-796	SPRING (B)	1	
57	322-794	SECOND SHAFT	1	
58	301-659	WASHER (B)	1	
59	301-660	CLUTCH SPRING	1	
60	324-532	CLUTCH	1	
61	324-533	RECIPROCATING BEARING	1	
62	322-797	FIRST GEAR	1	
64	626-VVM	BALL BEARING 626VVC2PS2L	1	
65	323-176	DUST SHAFT	1	
66	993-052	DUST WASHER	1	
67	600-1DD	BALL BEARING 6001DDCMPS2L	1	
68	302-372	FELT	1	
69	325-153	CASING (A)	1	
70	302-114	RUBBER SLEEVE	1	
*	71	360-746U	ARMATURE ASS'Y 120V	1 INCLUD. 45, 75
*	71	360-746E	ARMATURE 230V	1
72	324-531	FAN GUIDE	1	
73	961-672	HEX. HD. TAPPING SCREW D4X50	2	
*	74	340-635C	STATOR 110V-120V	1
*	74	340-635E	STATOR 220V-230V	1
75	608-VVM	BALL BEARING 608VVC2PS2L	1	
76	325-154	HITACHI PLATE	1	
77	324-553	HOUSING	1	
*	78	324-549	CHOKE COIL (A) BROWN	1 EXCEPT FOR USA, CAN
79	324-536	SWITCH (1P PILLAR TYPE)	1	
80	322-853	PUSHING BUTTON	1	
*	81	324-551	CHOKE COIL (A) BLUE	1 EXCEPT FOR USA, CAN
*	82	324-538	INTERNAL WIRE (A) (BLUE)	1 FOR USA, CAN
83	999-041	CARBON BRUSH (1 PAIR)	1	
84	955-203	BRUSH HOLDER	2	
*	85	324-537	INTERNAL WIRE (A) (BROWN)	1 FOR USA, CAN
86	999-072	CARBON BRUSH (AUTO STOP TYPE) (1 PAIR)	1	
*	87	930-039	NOISE SUPPRESSOR	1 EXCEPT FOR USA, CAN
*	88	981-373	TUBE (D)	2 FOR CORD
89	937-631	CORD CLIP	1	
90	984-750	TAPPING SCREW (W/FLANGE) D4X16	2	
91	324-554	HANDLE COVER	1	
92	301-653	TAPPING SCREW (W/FLANGE) D4X20 (BLACK)	3	
93	953-327	CORD ARMOR D8.8	1	
*	94	500-390Z	CORD	1 (CORD ARMOR D8.8)
*	94	500-249Z	CORD	1 (CORD ARMOR D8.8) FOR USA, CAN
95	302-074	DUST COLLECTION ADAPTER ASS'Y	1	INCLUD. 96-101
96	302-077	NOZZLE SEAL	1	
97	302-075	RUBBER CAP	1	
98	301-801	WING BOLT M6X27	1	
99	303-159	KNOB BOLT M4X25.5	1	
100	872-470	O-RING (S-26)	1	

STANDARD ACCESSORIES

DH 24PD3

ITEM NO.	CODE NO.	DESCRIPTION	NO. USED	REMARKS
501	325-099	CASE	1	
502	324-548	SIDE HANDLE	1	
503	302-374	CAP	1	

OPTIONAL ACCESSORIES

ITEM NO.	CODE NO.	DESCRIPTION	NO. USED	REMARKS
601	981-840	GREASE (A) FOR HAMMER. HAMMER DRILL (30G)	1	
602	308-471	GREASE FOR HAMMER. HAMMER DRILL (70G)	1	
603	980-927	GREASE FOR HAMMER. HAMMER DRILL (500G)	1	
604	306-885	DUST COLLECTOR (B) ASS'Y	1	INCLUD. 605
605	306-910	SOCKET ADAPTER (B)	1	
606	303-625	CORE BIT SHANK (SDS PLUS) 25-38MM 105L	1	
607	303-626	CORE BIT SHANK (SDS PLUS) 25-38MM 300L	1	
608	303-627	CORE BIT SHANK (SDS PLUS) 45-90MM 300L	1	
609	303-624	CHUCK ADAPTER (D) (SDS PLUS)	1	
610	321-825	DRILL CHUCK AND ADAPTER SET	1	INCLUD. 611
611	303-623	CHUCK ADAPTER (G) (SDS PLUS)	1	
612	303-369	MOTOR (SINGLE-PHASE)	1	
613	306-368	DRILL BIT (SLENDER SHAFT) D3.5X90	1	
614	306-370	ADAPTER FOR SLENDER SHAFT (SDS PLUS)	1	
615	931-844	STOPPER	1	
616	321-814	DRILL CHUCK 13VLRB-D	1	INCLUD. 617
617	995-344	FLAT HD. SCREW (A) (LEFT HAND) M6X25	1	
618	321-813	DRILL CHUCK 13VLD-D	1	
619	971-511Z	+ DRIVER BIT (A) NO. 2 25L	1	
620	971-512Z	+ DRIVER BIT (A) NO. 3 25L	1	
621	944-477	COTTER	1	
622	982-684	CENTER PIN (A) 109L FOR CORE BIT D32-38	1	
623	982-685	CENTER PIN (B) 104L FOR CORE BIT D45-90	1	
624	982-672	CORE BIT (A) 25MM	1	
625	982-673	CORE BIT (A) 29MM	1	
626	982-674	CORE BIT (A) 32MM	1	INCLUD. 627
627	982-686	GUIDE PLATE (FOR CORE BIT 32MM)	1	
628	982-675	CORE BIT (A) 35MM	1	INCLUD. 629
629	982-687	GUIDE PLATE (FOR CORE BIT 35MM)	1	
630	982-676	CORE BIT (A) 38MM	1	INCLUD. 631
631	982-688	GUIDE PLATE (FOR CORE BIT 38MM)	1	
632	982-677	CORE BIT (B) 45MM	1	INCLUD. 633
633	982-689	GUIDE PLATE (FOR CORE BIT 45MM)	1	
634	982-678	CORE BIT (B) 50MM	1	INCLUD. 635
635	982-690	GUIDE PLATE (FOR CORE BIT 50MM)	1	
636	971-794	ANCHOR SETTING ADAPTER A W1/4" (MANUAL)	1	
637	971-795	ANCHOR SETTING ADAPTER A W5/16" (MANUAL)	1	
638	971-796	ANCHOR SETTING ADAPTER A W3/8" (MANUAL)	1	
639	971-797	ANCHOR SETTING ADAPTER A W1/2" (MANUAL)	1	
640	971-798	ANCHOR SETTING ADAPTER A W5/8" (MANUAL)	1	
641	971-799	ANCHOR SETTING ADAPTER B W1/4" (MANUAL)	1	

