

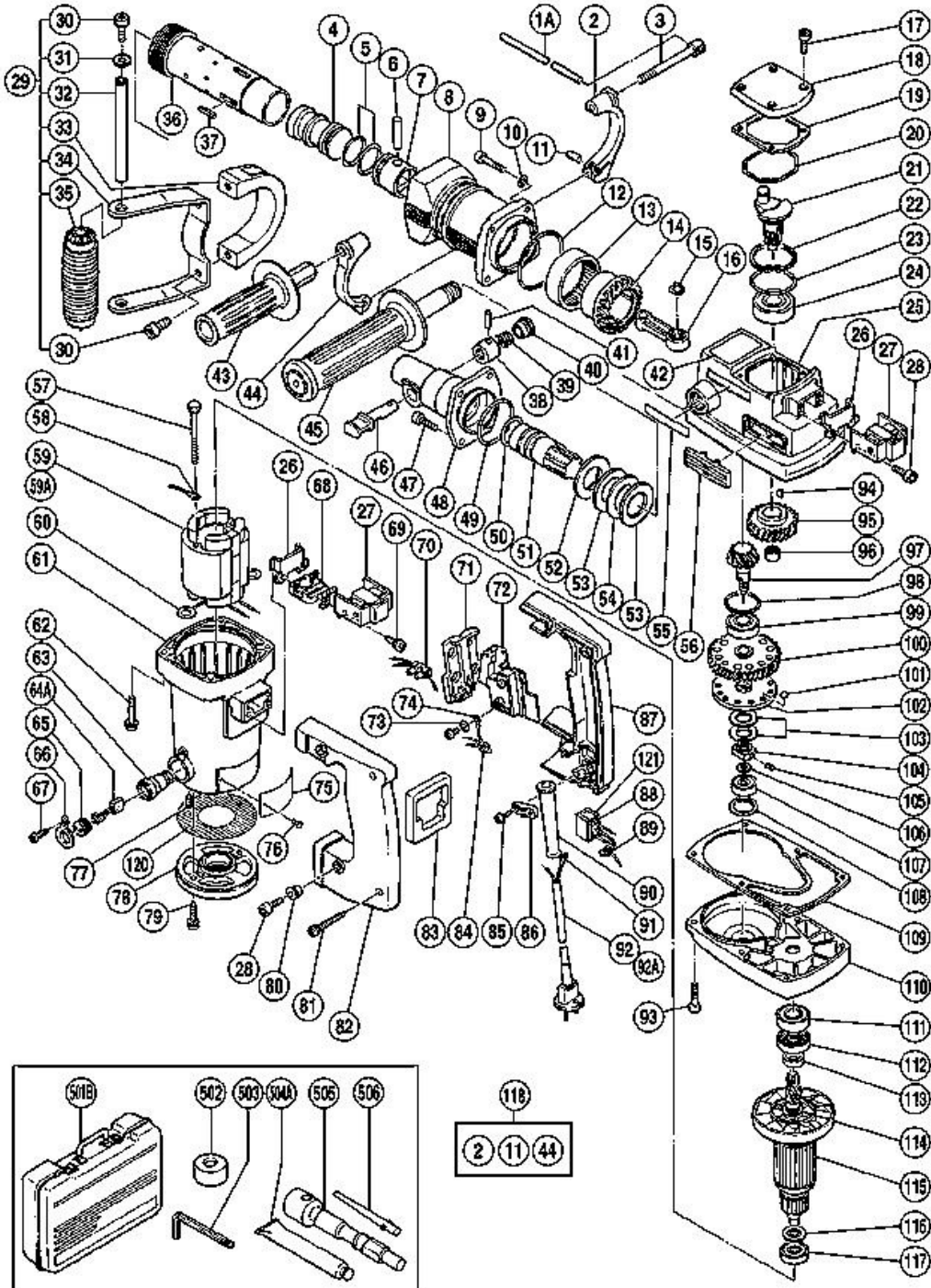
# Hitachi Power Tools

LIST NO. E408

## ELECTRIC TOOL PARTS LIST

**HAMMER DRILL  
Model DH 50SA1**

**2003・6・1  
(E3-3)**



## DH50SA1

ItemNo	CodeNo	Description	NoUsed	Remarks
1A	971-786	STOPPER ROD	1	"(SINCE 1.2001 FOR GBR,ESP)"
2	985-475	HANDLE HOLDER (A)	1	"(SINCE 1.2001 FOR GBR,ESP)"
3	985-465	HANDLE BOLT	1	"(SINCE 1.2001 FOR GBR,ESP)"
4	993-252	STRIKER	1	
5	985-773	O-RING (A)	2	
6	955-593	PISTON PIN	1	
7	985-772	PISTON	1	
8	993-247	CYLINDER CASE	1	
9	993-237	SEAL LOCK HEX. SOCKET HD. BOLT M6X35	4	
10	949-432	BOLT WASHER M6 (10 PCS.)	4	
11	949-747	ROLL PIN D6X25 (10 PCS.)	1	"(SINCE 1.2001 FOR GBR,ESP)"
12	985-779	O-RING (D)	1	
13	985-782	NEEDLE BEARING (M526320)	1	
14	985-775	THIRD GEAR	1	
15	939-542	RETAINING RING FOR D12 SHAFT (10 PCS.)	1	
16	985-771	CONNECTING ROD ASS'Y	1	
17	983-162	SEAL LOCK HEX. SOCKET HD. BOLT M4X12	4	
18	991-716	CRANK COVER	1	
19	980-749	SEAL PACKING	1	
20	980-744	O-RING (S-55)	1	
21	985-763	CRANK SHAFT	1	
22	948-227	RETAINING RING FOR D47 HOLE	1	
23	985-765	O-RING (B)	1	
24	620- 4DD	BALL BEARING 6204DDCMPS2L	1	
25	987-020	CRANK CASE	1	
26	980-750	GUIDE PLATE	2	
27	980-727	HANDLE RUBBER	2	
28	984-509	SEAL LOCK HEX. SOCKET HD. BOLT M5X14	6	
29	986-959	HOLDER ASS'Y	1	INCLUD.30-35 FOR DEN (TILL 12.2000 FOR
			0	"GBR,ESP)"

30	949-656	HEX. SOCKET HD. BOLT M8X20 (10 PCS.)	4	"FOR DEN (TILL 12.2000 FOR GBR,ESP)"
31	986-963	WASHER (C)	2	"FOR DEN (TILL 12.2000 FOR GBR,ESP)"
32	986-962	SHAFT	1	"FOR DEN (TILL 12.2000 FOR GBR,ESP)"
33	986-960	HOLDER (A)	1	"FOR DEN (TILL 12.2000 FOR GBR,ESP)"
34	986-961	HOLDER (B)	1	"FOR DEN (TILL 12.2000 FOR GBR,ESP)"
35	944-951	GRIP	1	"FOR DEN (TILL 12.2000 FOR GBR,ESP)"
36	993-231	CYLINDER	1	
37	971-750	FEATHER KEY 3X3X20	2	
38	993-241	SPRING CASE	1	
39	993-242	STOPPER SPRING	1	
40	993-243	STOPPER SLEEVE	1	
41	943-364	NEEDLE ROLLER D4X20	1	
42		CAUTION PLATE	1	"FOR GBR,DEN"
43	985-477	SIDE HANDLE	1	"(SINCE 1.2001 FOR GBR,ESP)"
44	985-476	HANDLE HOLDER (B)	1	"(SINCE 1.2001 FOR GBR,ESP)"
45	956-259	SIDE HANDLE	1	"FOR DEN (TILL 12.2000 FOR GBR,ESP)"
46	300-043	STOP LEVER	1	
47	985-479	SEAL LOCK HEX. SOCKET HD. BOLT M8X25	4	
48	300-014	FRONT COVER	1	
49	986-896	O-RING (F)	1	
50	986-882	O-RING	1	
51	300-013	SECOND HAMMER	1	
52	993-235	DAMPER WASHER	1	
53	993-234	DAMPER	2	
54	993-233	WASHER	1	
55	957-561	HITACHI LABEL	1	
56	991-713	WIND GUIDE (B)	2	
57	961-400	HEX. HD. TAPPING SCREW D5X70	2	
58	986-277	INTERNAL WIRE	1	
59	985-471L	STATOR ASS'Y 110V	1	INCLUD.60
59	985-471E	STATOR ASS'Y 220V-230V	1	INCLUD.60
59	985-471G	STATOR ASS'Y 220V-230V	1	"INCLUD.60 FOR NZL,ITA,FRA,SWE"
59	985-471K	STATOR ASS'Y 240V	1	INCLUD.60 FOR KUW
59	985-471J	STATOR 110V	1	INCLUD.60 FOR GBR
59A	985-471F	STATOR ASS'Y 230V-240V	1	"INCLUD.60 FOR GBR,FRG,HOL,DEN,NOR,FIN,"

			0	"AUT,AUS"
60	937-623	BRUSH TERMINAL	2	
61	985-435	HOUSING ASS'Y	1	"INCLUD.63,77"
62	994-085	HEX. SOCKET HD. BOLT (W/FLANGE) M6X60	4	
63	983-362	BRUSH HOLDER	2	
64A	999-071	CARBON BRUSH (AUTO STOP TYPE) (1 PAIR)	2	
65	961-781	BRUSH CAP	2	
66	981-959	CAP COVER	2	
67	958-715	TAPPING SCREW D4X10	2	
68	985-469	INTERNAL WIRE HOLDER	1	
69	985-605	TAPPING SCREW (W/WASHER) D5X25	2	
70	938-307	PILLAR TERMINAL	1	"FOR GBR,AUS"
71	990-082	SUPPORT (E)	1	
72	992-891	SWITCH (A) (1P SCREW TYPE) W/O LOCK	1	
73	949-423	WASHER M4 (10 PCS.)	1	"FOR GBR,AUS"
74	983- 276Z	INTERNAL WIRE	1	"FOR NZL,GBR,AUS"
75		NAME PLATE	1	
76	949-510	RIVET D2.5X4.8 (10 PCS.)	2	
77	938-477	HEX. SOCKET SET SCREW M5X8	2	
78	985-437	TAIL COVER	1	
79	985-480	TAPPING SCREW (W/WASHER) D5X20	2	
80	991-711	DISTANCE PIECE (B)	4	
81	956-636	TAPPING SCREW (W/WASHER) D4X25	2	
82	983-273	HANDLE (B)	1	
83	980-751	HANDLE PACKING	1	
84	959-141	CONNECTOR 50092 (10 PCS.)	2	"FOR NZL,GBR,AUS"
85	984-750	TAPPING SCREW (W/FLANGE) D4X16	2	
86	960-266	CORD CLIP	1	
87	983-272	HANDLE (A)	1	
88	994-273	NOISE SUPPRESSOR	1	
89	959-140	CONNECTOR 50091 (10 PCS.)	1	FOR NOISE SUPPRESSOR
90	958-049	CORD ARMOR D8.2	1	
90	940-778	CORD ARMOR D10.7	1	

91	992-810	TERMINAL	1	FOR CORD
92	500-408Z	CORD	1	(CORD ARMOR D8.2) FOR NZL
92	500-235Z	CORD	1	(CORD ARMOR D8.2) FOR INA
92	500-239Z	CORD	1	(CORD ARMOR D10.7)
92	500-390Z	CORD	1	"(CORD ARMOR D10.7) FOR ITA,FRG,FRA,HOL,
			0	"DEN,FIN,SWE,AUT,NOR,SAF"
92	500-439Z	CORD	1	(CORD ARMOR D10.7) FOR AUS
92	500-394Z	CORD	1	(CORD ARMOR D10.7) FOR SYR
92A	500-424Z	CORD	1	(CORD ARMOR D8.2) FOR SIN
92A	500-446Z	CORD	1	(CORD ARMOR D10.7) FOR GBS(230V)
92A	500-460Z	CORD	1	(CORD ARMOR D10.1) FOR GBR(110V)
93	992-803	SEAL LOCK HEX. SOCKET HD. BOLT M6X20	2	
94	932-815	WOODRUFF KEY 3X13	1	
95	985-764	FIRST GEAR	1	
96	939-299	NEEDLE BEARING (M661)	1	
97	985-770	THIRD PINION	1	
98	984-483	O-RING (S-36)	1	
99	620-2DD	BALL BEARING 6202DDCMPS2L	1	
100	985-766	SECOND GEAR	1	
101	959-150	STEEL BALL D6.35 (10 PCS.)	17	
102	985-767	CLUTCH PLATE	1	
103	985-768	BELLEVILLE SPRING	2	
104	300-042	SPECIAL NUT	1	
105	985-033	HEX. SOCKET SET SCREW M6X6	1	
106	944-516	BEARING WASHER (B)	1	
107	629-VVM	BALL BEARING 629VVC2PS2L	1	
108	944-525	BEARING WASHER (C)	1	
109	985-769	SEAL PACKING	1	
110	993-248	GEAR COVER	1	
111	620-	BALL BEARING	1	

	2VV	6202VVCMP2L		
112	985-439	OIL SEAL (FPM 807)	1	
113	985-438	SLEEVE	1	
114	985-482	FAN	1	
115	985-472U	ARMATURE ASS'Y 115V	1	"INCLUD.111,113,114,116,117"
115	985-472E	ARMATURE ASS'Y 220V-230V	1	INCLUD.114
115	985-472F	ARMATURE ASS'Y 240V	1	INCLUD.114
116	985-436	DUST WASHER	1	
117	620-0VV	BALL BEARING 6200VVCMP2L	1	
118	985-464	HANDLE HOLDER ASS'Y	1	"INCLUD.2,11,44 (SINCE 1.2001 FOR GBR,ES
120	305-195	NET	1	FOR FIN
121	930-153	SUPPORT (B)	1	FOR AUS
501B	319-784	CASE (PLASTIC)	1	
502	985-468	DUST COVER	1	
503	872-422	HEX. BAR WRENCH 6MM	1	
504A	981-840	GREASE (A) FOR HAMMER.HAMMER DRILL (30G)	1	
505	987-018	K-TAPER SHANK ADAPTER	1	INCLUD.506 FOR AUS
506	987-007	COTTER	1	FOR AUS
601	986-980	DRILL BIT D16.0X420 (HEX. SHANK TYPE)	1	
602	986-981	DRILL BIT D16.0X570 (HEX. SHANK TYPE)	1	
603	986-982	DRILL BIT D18.0X420 (HEX. SHANK TYPE)	1	
604	986-983	DRILL BIT D18.0X570 (HEX. SHANK TYPE)	1	
605	986-984	DRILL BIT D20.0X420 (HEX. SHANK TYPE)	1	
606	986-985	DRILL BIT D20.0X570 (HEX. SHANK TYPE)	1	
607	986-986	DRILL BIT D22.0X420 (HEX. SHANK TYPE)	1	
608	986-987	DRILL BIT D22.0X570 (HEX. SHANK TYPE)	1	
609	986-988	DRILL BIT D25.0X420 (HEX. SHANK TYPE)	1	
610	986-989	DRILL BIT D25.0X570 (HEX. SHANK TYPE)	1	
		DRILL BIT D28.0X420		

611	986-990	(HEX. SHANK TYPE)	1	
612	986-991	DRILL BIT D28.0X570 (HEX. SHANK TYPE)	1	
613	986-992	DRILL BIT D30.0X420 (HEX. SHANK TYPE)	1	
614	986-993	DRILL BIT D30.0X570 (HEX. SHANK TYPE)	1	
615	986-994	DRILL BIT D32.0X420 (HEX. SHANK TYPE)	1	
616	986-995	DRILL BIT D32.0X570 (HEX. SHANK TYPE)	1	
617	986-996	DRILL BIT D35.0X420 (HEX. SHANK TYPE)	1	
618	986-997	DRILL BIT D35.0X570 (HEX. SHANK TYPE)	1	
619	986-998	DRILL BIT D38.0X420 (HEX. SHANK TYPE)	1	
620	986-999	DRILL BIT D38.0X570 (HEX. SHANK TYPE)	1	
621	987-000	DRILL BIT D40.0X420 (HEX. SHANK TYPE)	1	
622	987-001	DRILL BIT D40.0X570 (HEX. SHANK TYPE)	1	
623	987-002	DRILL BIT D44.0X570 (HEX. SHANK TYPE)	1	
624	987-003	DRILL BIT D50.0X420 (HEX. SHANK TYPE)	1	
625	987-004	DRILL BIT D50.0X570 (HEX. SHANK TYPE)	1	
626	987-018	K-TAPER SHANK ADAPTER	1	INCLUD.628
627	987-006	A-TAPER SLEEVE	1	
628	987-007	COTTER	1	
629	985-380	CORE BIT 50MM	1	
630	987-009	CORE BIT 65MM	1	
631	987-010	CORE BIT 80MM	1	
632	987-011	CORE BIT 90MM	1	
633	987-012	CORE BIT 100MM	1	
634	987-013	CORE BIT 125MM	1	
635	987-014	CORE BIT SHANK	1	
636	955-165	CENTER PIN (A) 133L FOR CORE BIT D38-150	1	
637	984-028	RATIO SHANK ADAPTER	1	
638	980-927	GREASE FOR HAMMER.HAMMER DRILL (500G)	1	
		SYRINGE (BELLOWS)		

639A	318-085	TYPE)	1	
640	986-947	BULL POINT 300MM	1	
641	986-948	BULL POINT 380MM	1	
642	986-949	BULL POINT 450MM	1	
643	986-952	COLD CHISEL 300MM	1	
644	986-953	COLD CHISEL 380MM	1	
645	986-954	COLD CHISEL 450MM	1	
646	986-950	CUTTER W50X400L	1	
647	986-951	CUTTER W75X400L	1	
648	305-074	SERVICE KIT (DH 50SA1)	1	"INCLUD.5,12,15,19,20,47,49,50,53,64,109
649	308-471	GREASE FOR HAMMER.HAMMER DRILL (70G)	1	
650	318-843	STRIKER	1	FOR ITA
651	320-859	SYRINGE (BLOW-OUT BULB TYPE)	1	
			0	