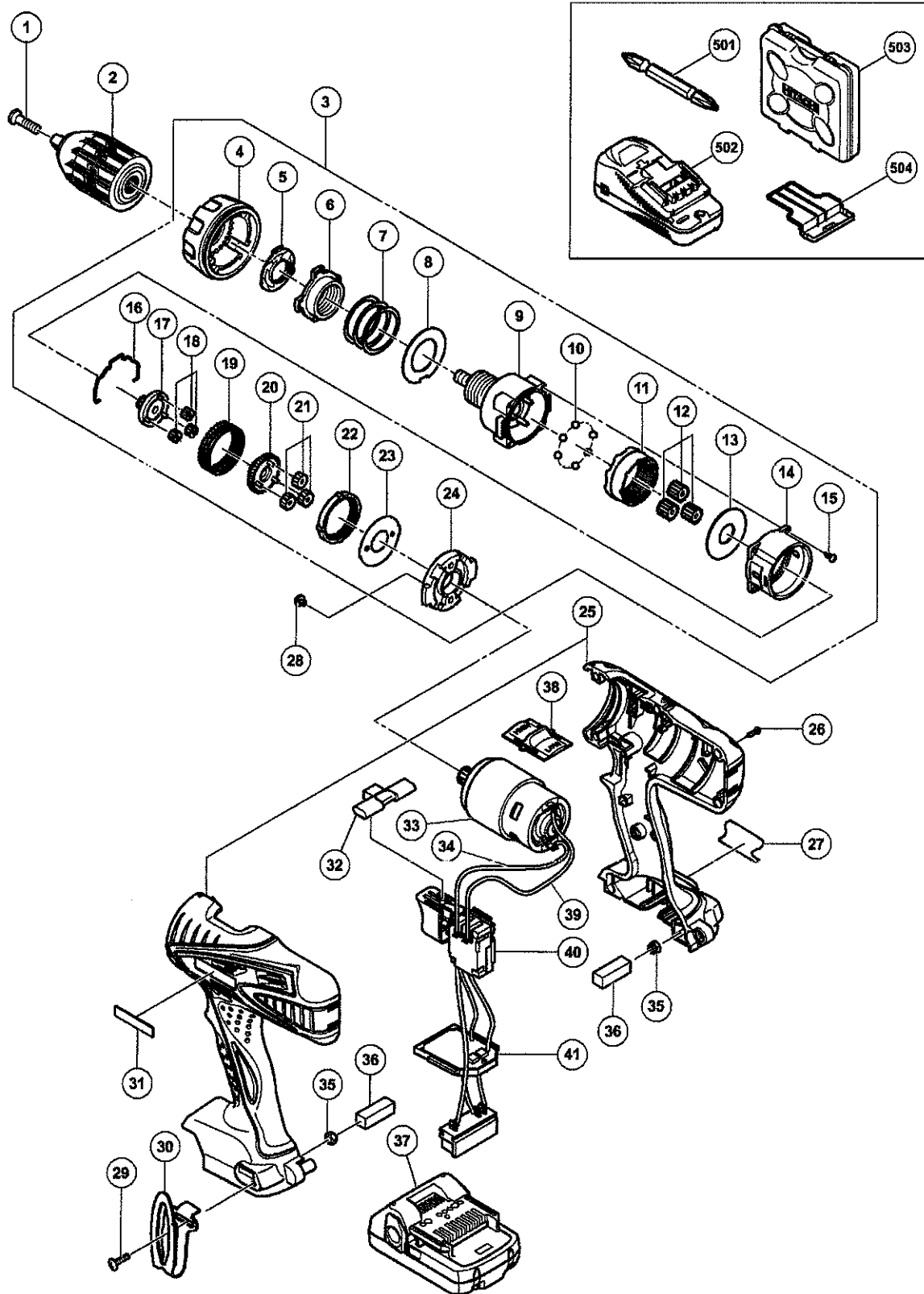


ELECTRIC TOOL PARTS LIST

CORDLESS DRIVER DRILL
Model DS 18DSFL

2010-9-27
(E1)



PARTS

DS 18DSFL

| ITEM NO. | CODE NO. | DESCRIPTION | NO. USED | REMARKS |
|----------|----------|--|----------|--------------|
| 1 | 311-959 | SPECIAL SCREW (LEFT HAND) M6 X 23 | 1 | |
| * 2 | 332-049 | DRILL CHUCK 13VLRS-N | 1 | |
| * 2 | 324-205 | DRILL CHUCK 13VLRM-N (W/O CHUCK WRENCH) | 1 | FOR USA, CAN |
| 3 | 333-315 | GEAR BOX ASS'Y | 1 | INCLUD. 4-24 |
| 4 | 332-025 | CLUTCH DIAL | 1 | |
| 5 | 332-741 | CLICK SPRING | 1 | |
| 6 | 324-109 | NUT | 1 | |
| 7 | 324-110 | SPRING | 1 | |
| 8 | 324-347 | WASHER (D) | 1 | |
| 9 | 333-314 | FRONT CASE | 1 | |
| 10 | 306-936 | STEEL BALL D5 | 6 | |
| 11 | 332-027 | RING GEAR | 1 | |
| 12 | 332-028 | PLANET GEAR (C) SET (3 PCS.) | 3 | |
| 13 | 324-349 | WASHER (A) | 1 | |
| 14 | 324-501 | REAR CASE | 1 | |
| 15 | 324-357 | SCREW SET D3 X 12 (4 PCS.) | 4 | |
| 16 | 324-115 | SHIFT ARM | 1 | |
| 17 | 332-029 | PINION (C) | 1 | |
| 18 | 332-031 | PLANET GEAR (B) SET (3 PCS.) | 3 | |
| 19 | 332-030 | SLIDE RING GEAR (B) | 1 | |
| 20 | 332-032 | PINION (B) | 1 | |
| 21 | 332-034 | PLANET GEAR (A) SET (3 PCS.) | 3 | |
| 22 | 332-033 | FIRST RING GEAR | 1 | |
| 23 | 324-355 | WASHER (B) | 1 | |
| 24 | 332-035 | MOTOR SPACER | 1 | |
| * 25 | 333-313 | HOUSING (A). (B) SET | 1 | |
| * 25 | 332-821 | HOUSING (A). (B) SET | 1 | FOR USA, CAN |
| 26 | 313-687 | TAPPING SCREW (W/FLANGE) D3 X 16 (BLACK) | 9 | |
| 27 | | NAME PLATE | 1 | |
| 28 | 317-333 | MACHINE SCREW (W/SP. WASHER) M4 X 6 | 2 | |
| 29 | 327-001 | TRUSS HD. SCREW M4 (BLACK) | 1 | |
| 30 | 332-824 | HOOK | 1 | |
| 31 | 330-719 | HITACHI LABEL | 1 | |
| 32 | 332-836 | PUSHING BUTTON | 1 | |
| 33 | 332-558 | MOTOR DC 18V | 1 | |
| 34 | 332-843 | INTERNAL WIRE (BLACK) 130L | 1 | |
| 35 | 327-002 | LOCK NUT M4 (BLACK) | 2 | |
| 36 | 327-004 | PACKING | 2 | |
| * 37 | 333-352 | BATTERY BSL 1815 (EUROPE) | 2 | INCLUD. 504 |
| * 37 | 333-353 | BATTERY BSL 1815 (USA, CAN) | 2 | INCLUD. 504 |
| 38 | 332-036 | SHIFT KNOB | 1 | |
| 39 | 324-499 | INTERNAL WIRE (RED) 140L | 1 | |
| 40 | 332-822 | DC-SPEED CONTROL SWITCH | 1 | |
| 41 | 332-823 | CONTROLLER TERMINAL SET | 1 | |
| | | | | |
| | | | | |
| | | | | |
| | | | | |
| | | | | |

STANDARD ACCESSORIES

DS 18DSFL

| ITEM NO. | CODE NO. | DESCRIPTION | NO. USED | REMARKS |
|----------|----------|---------------------------|----------|---------|
| 501 | 983-006 | + DRIVER BIT NO.2 65L | 1 | |
| 502 | | CHARGER (MODEL UC 18YGSL) | 1 | |
| 503 | 332-022 | CASE (BLACK) | 1 | |
| 504 | 329-897 | BATTERY COVER | 1 | |
| | | | | |
| | | | | |
| | | | | |
| | | | | |
| | | | | |

OPTIONAL ACCESSORIES

| ITEM NO. | CODE NO. | DESCRIPTION | NO. USED | REMARKS |
|----------|----------|----------------------------|----------|---------|
| 601 | 955-657 | - DRIVER BIT (A) 3MM X 70L | 1 | |
| 602 | 955-659 | - DRIVER BIT (A) 4MM X 70L | 1 | |
| 603 | 955-674 | - DRIVER BIT (A) 6MM X 70L | 1 | |
| 604 | 983-004 | + DRIVER BIT NO.1 65L | 1 | |
| 605 | 983-011 | + DRIVER BIT NO.3 65L | 1 | |
| | | | | |
| | | | | |
| | | | | |
| | | | | |
| | | | | |
| | | | | |
| | | | | |
| | | | | |
| | | | | |
| | | | | |
| | | | | |
| | | | | |
| | | | | |
| | | | | |
| | | | | |
| | | | | |
| | | | | |
| | | | | |
| | | | | |
| | | | | |
| | | | | |
| | | | | |
| | | | | |
| | | | | |
| | | | | |
| | | | | |
| | | | | |
| | | | | |
| | | | | |
| | | | | |
| | | | | |
| | | | | |
| | | | | |
| | | | | |
| | | | | |
| | | | | |