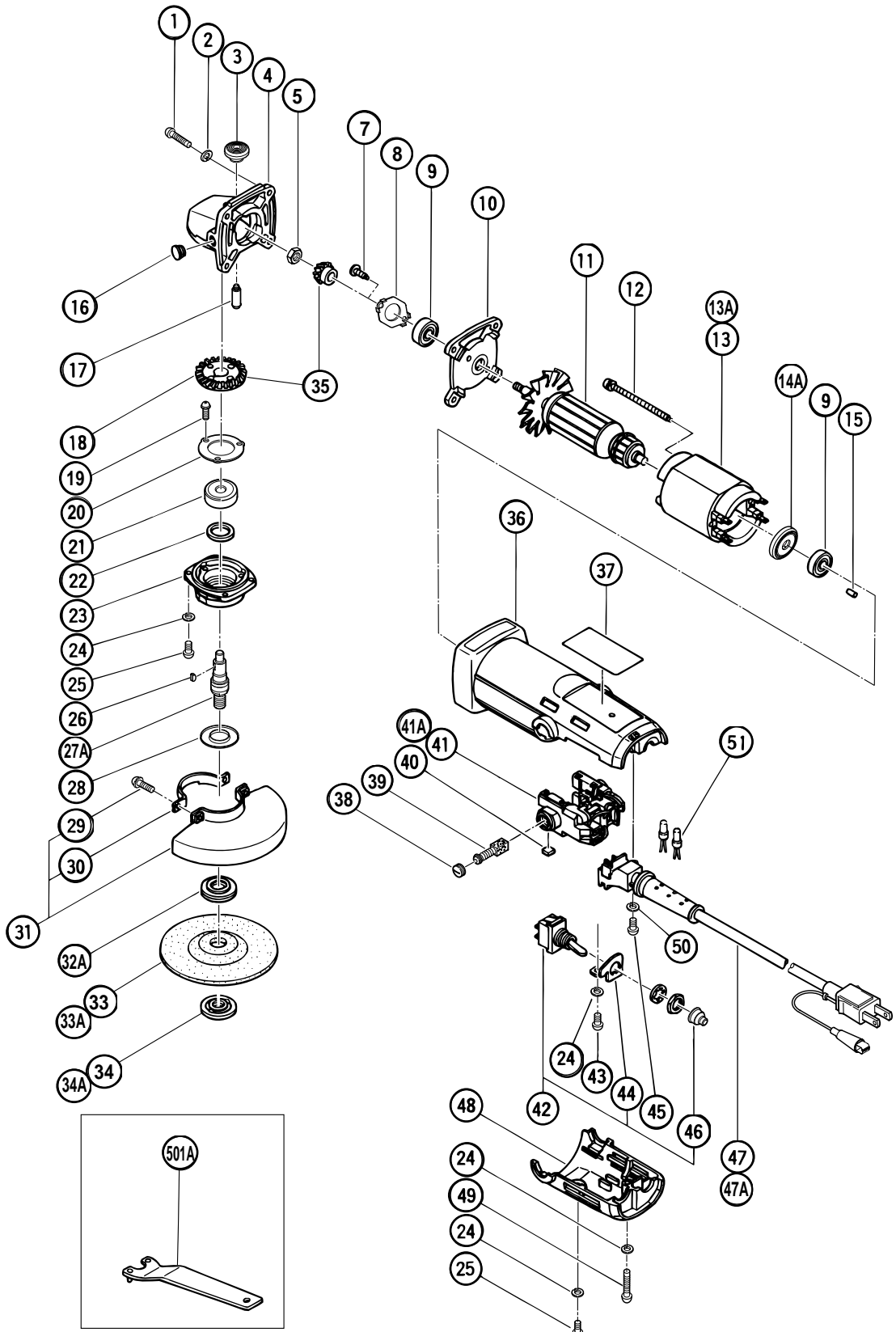


ELECTRIC TOOL PARTS LIST

■ DISC GRINDER
Model G 10SB1

2000・9・29
(E4)



PARTS

G 10SB1

ITEM NO.	CODE NO.	DESCRIPTION	NO. USED	REMARKS
1	949-240	MACHINE SCREW M5X18 (10 PCS.)	4	
2	949-454	SPRING WASHER M5 (10 PCS.)	4	
3	301-944	PUSHING BUTTON	1	
4	301-960	GEAR COVER ASS'Y	1	INCLUD.3,17
5	301-941	SPECIAL NUT M7	1	
6	301-939	PINION	1	
7	301-936	SLOTTED HD. SCREW (SEAL LOCK) M4X10	2	
8	301-937	BEARING COVER	1	
9	608-VVM	BALL BEARING 608VVC2PS2L	2	
10	301-935	INNER COVER	1	
* 11	360-135C	ARMATURE 110V-115V	1	
* 11	360-135	ARMATURE 120V-127V	1	
* 11	360-135E	ARMATURE 220V-230V	1	
* 11	360-135F	ARMATURE 240V	1	
* 11	360-226	ARMATURE ASS'Y 100V	1	INCLUD.9,14A FOR KOR
12	301-959	MACHINE SCREW (W/SP. WASHER) M4X66	2	
* 13	340-167C	STATOR 110V-115V	1	
* 13	340-167D	STATOR 120V-127V	1	
* 13	340-167F	STATOR 240V	1	
* 13	340-166	STATOR 100V	1	FOR KOR
* 13A	340-167G	STATOR 220V-230V	1	
14A	311-435	DUST SEAL (A)	1	
15	931-701	BEARING LOCK	1	
16		CAP	1	
17	301-943	LOCK PIN	1	
18	301-940	GEAR	1	
19	997-263	SEAL LOCK SCREW (W/SP. WASHER) M4X10	3	
20	938-058	BEARING COVER (B)	1	
21	600-1VV	BALL BEARING 6001VVCMP2L	1	
22	301-946	FELT PACKING	1	
23	301-947	PACKING GLAND	1	
24	949-453	SPRING WASHER M4 (10 PCS.)	7	
25	949-217	MACHINE SCREW M4X12 (10 PCS.)	5	
26	302-047	WOODRUFF KEY	1	
27A	302-046	SPINDLE M10XP1.5	1	
28	301-945	FRINGER	1	
29	987-512	MACHINE SCREW (W/SP. WASHER) M5X16	2	
30	301-949	SET PLATE	1	
31	301-948	WHEEL GUARD ASS'Y	1	INCLUD.29,30
* 32A	310-787	WHEEL WASHER	1	
* 32A	311-791	WHEEL WASHER	1	FOR KOR
* 33	939-640	D. C. WHEELS 100MMX4T A36Q (20 PCS.)	1	FOR KOR
* 33A	316-820	D. C. WHEELS 100MMX4T A36Q (25 PCS.)	1	
* 34	938-062	WHEEL NUT (B)	1	FOR KOR
* 34A	314-437	WHEEL NUT (C)	1	
35	301-938	GEAR AND PINION ASS'Y	1	INCLUD.6,18
36	302-108	HOUSING	1	
37		NAME PLATE	1	
38	936-551	BRUSH CAP	2	
39	999-021	CARBON BRUSH (1 PAIR)	2	
40	984-630	RUBBER PACKING	2	

* : ALTERNATIVE PARTS

9 - 00

PARTS

G 10SB1

ITEM NO.	CODE NO.	DESCRIPTION	NO. USED	REMARKS	
* 41	301-952	WIRING BLOCK ASS'Y	1	INCLUD.40 (TILL 9.1996 FOR INA,SUR,SIN, K UW)	
* 41	301-951	WIRING BLOCK ASS'Y	1	INCLUD.40 FOR KOR	
* 41	310-291	WIRING BLOCK ASS'Y	1	INCLUD.40 FOR CHN	
* 41A	313-244	WIRING BLOCK ASS'Y	1	INCLUD.40 SINCE 10.1996 FOR INA,SUR, SIN,KUW	
42	984-862	SWITCH ASS'Y (1P PLUG IN TYPE)	1	INCLUD.44,46	
43	949-216	MACHINE SCREW M4X10 (10 PCS.)	1		
44	984-624	SWITCH PLATE	1		
* 45	949-292	MACHINE SCREW (BRASS) M4X6 (10 PCS.)	1		
* 45	949-214	MACHINE SCREW M4X6 (10 PCS.)	1	FOR CHN	
46	938-050	RUBBER CAP	1		
* 47	302-030	CORD (A)	1		
* 47	302-028	CORD (A) 100V	1	FOR KOR	
* 47	302-031	CORD	1	TILL 9.1996 FOR INA,SUR	
* 47	302-032	CORD	1	FOR SYR	
* 47	302-033	CORD	1	TILL 9.1996 FOR SIN,KUW	
* 47	302-034	CORD	1	FOR NGU	
* 47	310-332	CORD	1	FOR CHN	
* 47A	313-245	CORD	1	SINCE 10.1996 FOR INA,SUR	
* 47A	313-243	CORD	1	FOR HKG (SINCE 10.1996 FOR SIN,KUW)	
48	301-961	TAIL COVER	1		
49	949-223	MACHINE SCREW M4X25 (10 PCS.)	1		
* 50	949-453	SPRING WASHER M4 (10 PCS.)	1	(FOR MACHINE SCREW M4X6) FOR CHN	
* 51	959-140	CONNECTOR 50091 (10 PCS.)	2	FOR INA,SUR,SIN,KUW	

STANDARD ACCESSORIES

G 10SB1

ITEM NO.	CODE NO.	DESCRIPTION	NO. USED	REMARKS	
501A	313-933	WRENCH	1		

OPTIONAL ACCESSORIES

ITEM NO.	CODE NO.	DESCRIPTION	NO. USED	REMARKS	
601	302-098	GUIDE BASE	1		
602	314-051	SANDING DISCS 100MM C-P16 (10 PCS.)	1		
603	314-052	SANDING DISCS 100MM C-P20 (10 PCS.)	1		
604	314-053	SANDING DISCS 100MM C-P24 (10 PCS.)	1		
605	314-054	SANDING DISCS 100MM C-P30 (10 PCS.)	1		
606	314-055	SANDING DISCS 100MM C-P36 (10 PCS.)	1		
607	314-056	SANDING DISCS 100MM C-P40 (10 PCS.)	1		
608	314-057	SANDING DISCS 100MM C-P50 (10 PCS.)	1		
609	314-058	SANDING DISCS 100MM C-P60 (10 PCS.)	1		
610	314-059	SANDING DISCS 100MM C-P80 (10 PCS.)	1		
611	314-060	SANDING DISCS 100MM C-P100 (10 PCS.)	1		
612	314-061	SANDING DISCS 100MM C-P120 (10 PCS.)	1		
613	936-548	WASHER	1		
614	936-558Z	RUBBER PAD	1		
615	935-513	WASHER NUT M10XP1.5	1		
616A	315-970	PLUG SET	1		
617	954-021	SIDE HANDLE	1		
618	306-162	DIAMOND WHEEL 106MM-D20 HOLE	1	WAVE SHAPE TYPE FOR DRY CUTTING	