

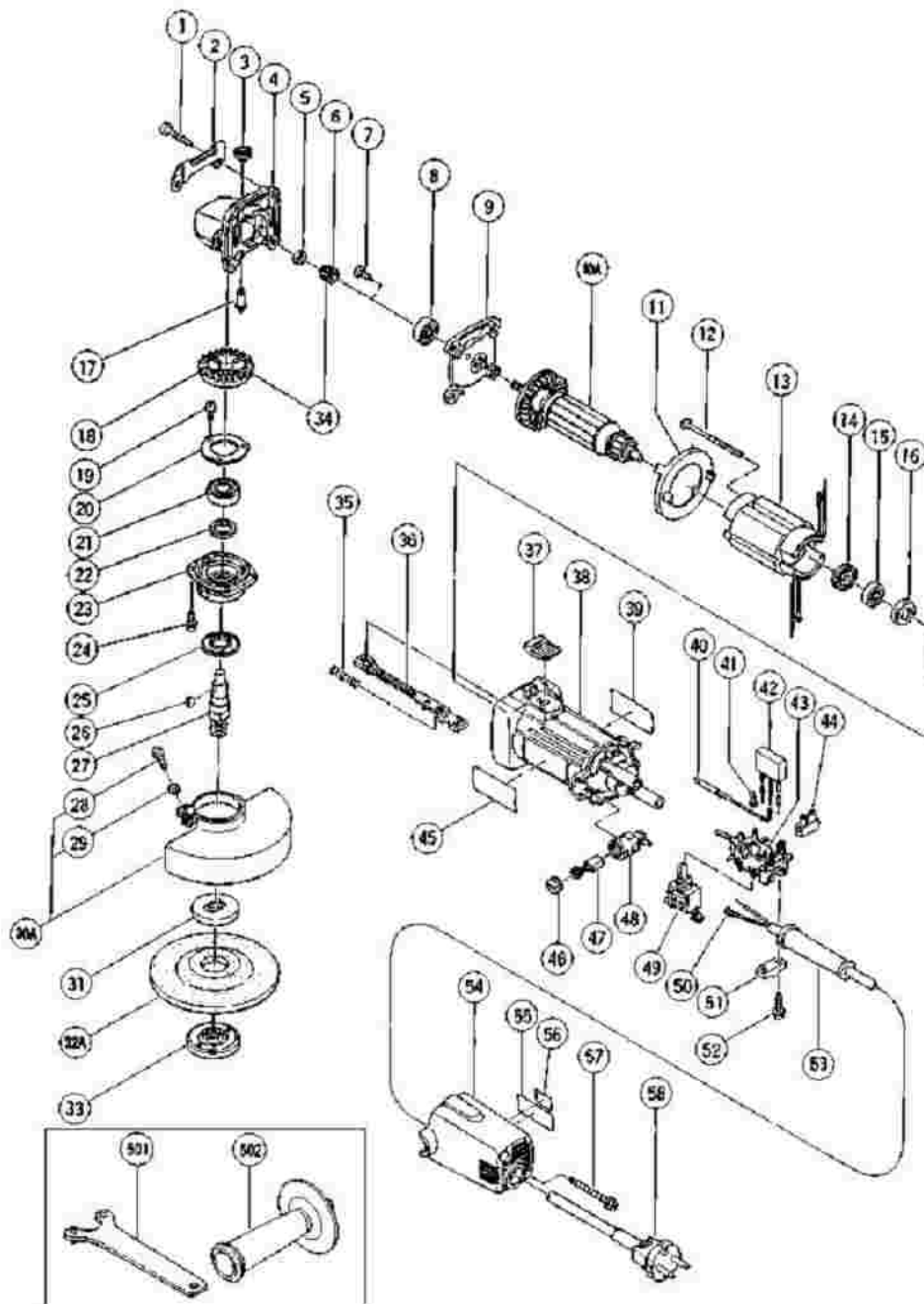
HITACHI

LIST NO. E226

ELECTRIC TOOL PARTS LIST

■ DISC GRINDER
Model G 12SG

2001·6·1
(E1-1)



G12SG

Pos. Nr.	Art. Nr.	Beschreibung	Stueck	Kommentar	Beschreibung
1	937-807	SCHNEIDSCHRAUBE D5X25	4		TAPPING SCREW D5X25
2	302-149	ABLAGEBÜGEL G12SG/SR/S1/G13YB1	1		GUARD PLATE
3	301-944	ARRETIERUNGSSTIFT G12S1/G12SA2/	1		PUSHING BUTTON
4	314-125	GETRIEBEGEHÄUSE KOMPLETT G12SR	1	INCLUD.3,17	GEAR COVER ASS'Y
5	309-191	SPEZIALMUTTER M6 G12SG/G15YC	1		SPECIAL NUT M6
6	309-189	RITZEL G12SG	1		PINION
7	314-430	-KOPFSCHRAUBE M4X10 SELBSTS.	2		SLOTTED HD. SCREW (SEAL LOCK) M4X10
8	608-VVM	KUGELLAGER 608 VVM	1		BALL BEARING 608VVC2PS2L
9	301-935	INNENABDECKUNG G12S1/FG12SA2	1		INNER COVER
10A	360-436		1		ARMATURE 110V
10A	360-437U		1	INCLUD.8,14,15	ARMATURE ASS'Y 115V
10A	360-437E	ANKER 220V-240V G12SG	1		ARMATURE 220V-240V
11	306-840	LUFTFÜHRUNG G12SG	1		FAN GUIDE
12	982-021	SECHSKANTSCHNEIDSCHRAUBE D4X70	2		HEX. HD. TAPPING SCREW D4X70
13	340-385E	STATOR 220-230V G12SG	1		STATOR 220V-240V
13	340-385C		1		STATOR 110V-115V
14	313-775	STAUBDICHTUNG G12SG	1		DUST SEAL
15	626-VVM	KUGELLAGER 626 VVM	1		BALL BEARING 626VVC2PS2L
16	309-929	GUMMIBUCHSE G12SG	1		RUBBER BUSHING
17	301-943	STIFT G12S1/G12SA2/G13YB1/G13V/	1		LOCK PIN
18	309-190	ZAHNRAD G12SG	1		GEAR
		+KOPFSCHRAUBE M4X10			SEAL LOCK SCREW (W/SP.

19	997-263	M.FEDERRING	3		WASHER) M4X10
20	938-058	LAGERDECKEL FG12SA2/G12SG/u.a.	1		BEARING COVER (B)
21	600-1VV	KUGELLAGER 6001 VV	1		BALL BEARING 6001VVCMP2L
22	301-946	FILZDICHTUNG G12S1/G13YB1/FG12SA2	1		FELT PACKING
23	302-286	GETRIEBEDECKEL FG12SA2/G12S1	1		PACKING GLAND
24	307-127	+KOPFSCHRAUBE M4X12 M.FEDERRING	4		SEAL LOCK SCREW (W/SP. WASHER) M4X12
25	301-945	SCHLEUDERSCHEIBE G12S1/G13YB1	1		FRINGER
26	940-220	HALBMONDKEIL FG12SA/G12S1/G13V	1		WOODRUFF KEY 2.5X8
27	302-059	SPINDEL G12S1/G13YB1	1		SPINDLE
27	302-060		1	FOR USA	SPINDLE
28	949-241	+KOPFSCHRAUBE M5X20 (10ST)	1		MACHINE SCREW M5X20 (10 PCS.)
29	949-454	FEDERSCHEIBE M5 (10ST)	1		SPRING WASHER M5 (10 PCS.)
30B	319-656		1	INCLUD.28,29	WHEEL GUARD ASS'Y
31	937-817Z	SPANNFLANSCH G12S1/SA- SG/G13SB-YC	1		WHEEL WASHER
31	937-922P		1	FOR USA	WHEEL WASHER (B) FOR D5/8" HOLE
32A	316-821		1		D. C. WHEELS 115MM A36Q (25 PCS.)
33	994-324	FLANSCHMUTTER G12S1/SA/G13V/	1		WHEEL NUT M14
33	937-923P		1	FOR USA	WHEEL NUT 5/8"-11UNC
34	309-188	GETRIEBE KOMPL. G12SG	1	IMCLUD.6,18	GEAR AND PINION ASS'Y
35	314-429	FEDER G12SG/G13V/G13YD	1		SPRING
36	314-427	SCHIEBESTAB G12SG	1		SLIDE BAR
		SCHIEBEKNOPF			

37	314-428	G12SG/G13V/G13YD	1		SLIDE KNOB
38	314-438	MOTORGEHÄUSE G12SG	1	INCLUD.16	HOUSING ASS'Y
39			1		NAME PLATE
40	314-854	ERDUNGSKLEMME G12S2/G13SD/G13V	1	FOR NOISE SUPPRESSOR	EARTH TERMINAL
41	311-741	KABELSCHUH DIV.TYPEN	1		TERMINAL
42	994-273	KONDENSATOR DIV.TYPEN	1		NOISE SUPPRESSOR
43	314-432	SCHALTERHALTER G12SG	1		SWITCH HOLDER
44	938-307	SCHRAUBKLEMME 1-REIHIG DIV.TYPEN	1		PILLAR TERMINAL
45			1		HITACHI LABEL
46	936-551	KOHLLENKAPPE D10YB	2		BRUSH CAP
47	999-021	KOHLLENBÜRSTEN (PAAR)	2		CARBON BRUSH (1 PAIR)
48	313-777	KOHLLENHALTER G12SG	2		BRUSH HOLDER
49	314-603	SCHALTER G12SG/G13V/G13YD	1		SWITCH (1P SOLDER TYPE)
49	955-509	SCHALTER G12SG/M8/M8V/CE16/G13V	1	FOR NZL,AUS,USA	SWITCH (1P SCREW TYPE)
50	980-063	KABELSCHUH C7U/CJ65V2/H70SA/G13V	1	FOR CORD	TERMINAL
51	937-631	KABELKLEMME DIV.TYPEN	1		CORD CLIP
52	984-750	SCHNEIDSCHRAUBE D4X16 MIT FLANSCH	2		TAPPING SCREW (W/FLANGE) D4X16
53	953-327	KABELKNICKSCHUTZ D8.8 DIV.TYPEN	1		CORD ARMOR D8.8
54	314-433	ENDDECKEL G12SG	1		TAIL COVER
55			1		CAUTION PLATE
			0	FOR US	
56			1		LABEL (CE MARK)(A)
			0	FOR EUROPE	
57	301-815	SCHNEIDSCHRAUBE D4X45 M.FLANSCH	2		TAPPING SCREW (W/FLANGE) D4X45
	500-	ANSCHLUSSKABEL MIT			

58	234Z	STECKER	1		CORD
58	500-439Z		1	FOR NZL,AUS	CORD
58	500-237Z		1	FOR SAF	CORD
58	500-447Z		1	FOR SUI	CORD
58	500-432Z		1	FOR USA	CORD
58A	500-461Z		1	FOR GBR (110V)	CORD
501	938-332Z	STIRNLOCHSCHLÜSSEL G12SA/G13V	1		WRENCH
502	302-142	SEITENGRIFFF G12S1/G13YB1/G13V	1		SIDE HANDLE
502	302-739		1	FOR USA	SIDE HANDLE (C)