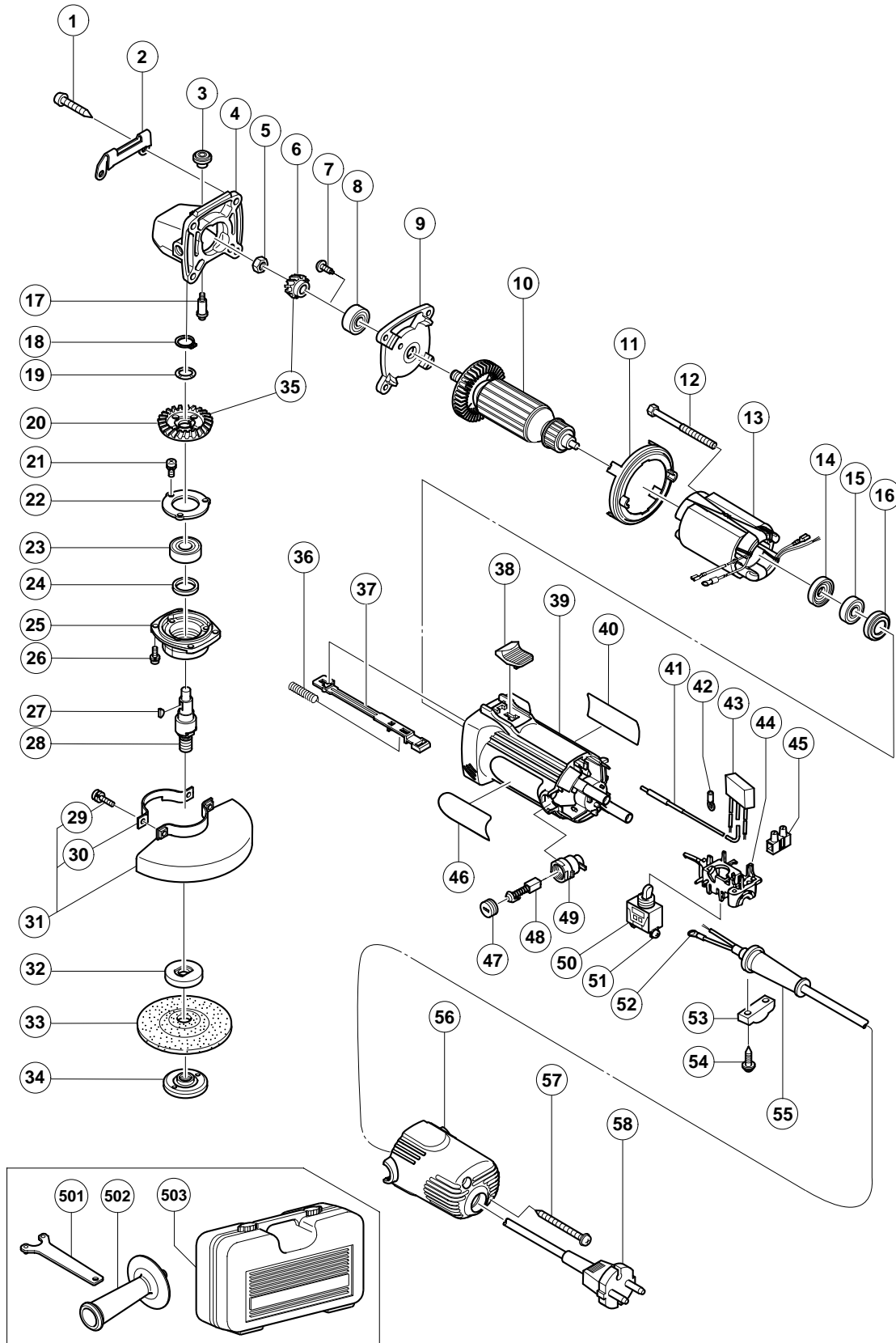


ELECTRIC TOOL PARTS LIST

■ DISC GRINDER
Model G 12SR2

2003 • 2 • 5
(E1)



PARTS

G 12SR2

ITEM NO.	CODE NO.	DESCRIPTION	NO. USED	REMARKS
1	320-523	TAPPING SCREW D5X25 (BLACK)	4	
2	302-149	GUARD PLATE	1	
3	301-944	PUSHING BUTTON	1	
4	314-125	GEAR COVER ASS'Y	1	INCLUD. 3, 17
5	309-191	SPECIAL NUT M6	1	
6	321-724	PINION	1	
7	314-430	SLOTTED HD. SCREW (SEAL LOCK) M4X10	2	
8	608-VVM	BALL BEARING 608VVC2PS2L	1	
9	301-935	INNER COVER	1	
* 10	360-605C	ARMATURE 110V	1	
* 10	360-605U	ARMATURE ASS'Y 120V	1	INCLUD. 8, 14, 15
* 10	360-605E	ARMATURE 220V-240V	1	
11	306-840	FAN GUIDE	1	
12	963-712	HEX. HD. TAPPING SCREW D4X65	2	
* 13	340-552C	STATOR 110V	1	
* 13	340-552D	STATOR 120V	1	
* 13	340-552E	STATOR 220V-230V	1	
* 13	340-552F	STATOR 240V	1	
14	321-722	DUST SEAL	1	
15	626-VVM	BALL BEARING 626VVC2PS2L	1	
16	309-929	RUBBER BUSHING	1	
17	301-943	LOCK PIN	1	
18	316-487	RETAINING RING FOR D11 SHAFT	1	
19	316-486	WAVE WASHER	1	
20	321-725	GEAR	1	
21	987-201	SEAL LOCK SCREW (W/SP. WASHER) M4X10	3	
22	938-058	BEARING COVER (B)	1	
23	600-1VV	BALL BEARING 6001VVCMP2L	1	
24	301-946	FELT PACKING	1	
25	301-947	PACKING GLAND	1	
26	987-203	SEAL LOCK SCREW (W/SP. WASHER) M4X12	4	
27	302-047	WOODRUFF KEY	1	
* 28	321-729	SPINDLE M14	1	
* 28	321-730	SPINDLE 5/8"-11UNC	1	FOR USA, CAN
29	308-386	MACHINE SCREW (W/SP. WASHER) M5X16 (BLACK)	2	
30	301-949	SET PLATE	1	
31	315-492	WHEEL GUARD ASS'Y	1	INCLUD. 29, 30
* 32	937-817Z	WHEEL WASHER	1	
* 32	319-373	WHEEL WASHER	1	FOR USA, CAN
* 33	316-821	D. C. WHEELS 115MM A36Q (25 PCS.)	1	FOR USA, CAN, NZL, AUS
* 34	994-324	WHEEL NUT M14	1	
* 34	937-923P	WHEEL NUT 5/8"-11UNC	1	FOR USA, CAN
35	321-723	GEAR AND PINION ASS'Y	1	INCLUD. 6, 20
36	314-429	SPRING	1	
37	314-427	SLIDE BAR	1	
38	314-428	SLIDE KNOB	1	
39	321-721	HOUSING ASS'Y	1	INCLUD. 16
* 40		NAME PLATE	1	
* 41	314-854	EARTH TERMINAL	1	FOR NOISE SUPPRESSOR
* 42	980-063	TERMINAL	1	FOR NOISE SUPPRESSOR
* 43	994-273	NOISE SUPPRESSOR	1	EXCEPT FOR USA, CAN, UAE

