

Hitachi Power Tools

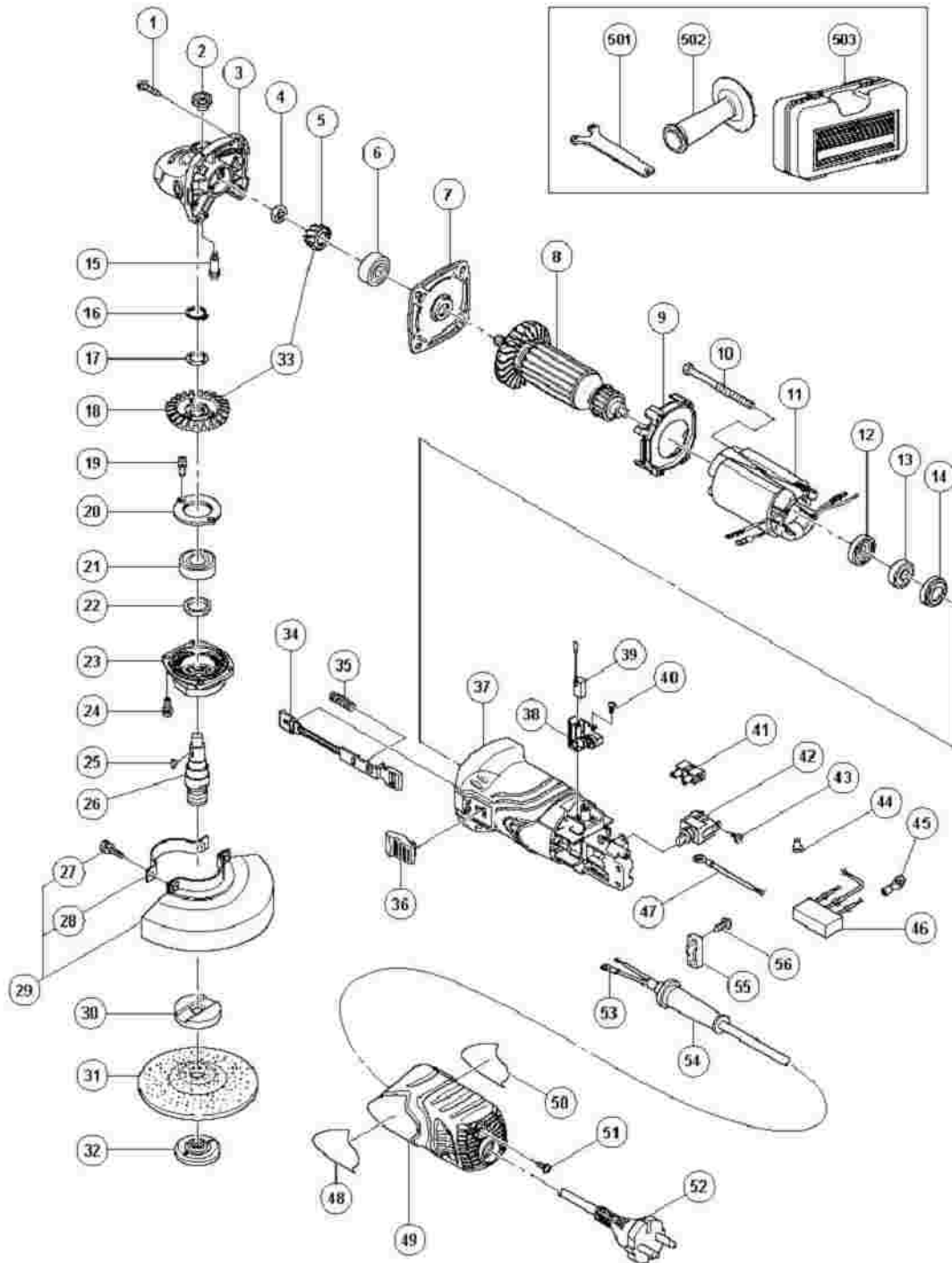
LIST NO. E288

ELECTRIC TOOL PARTS LIST

■ DISC GRINDER
Model G 13SR3

2007 · 4 · 13

(E1)



G13SR3

Pos. Nr.	Art. Nr.	Beschreibung	Stueck	Kommentar	Beschreib
1	307-028	SCHNEIDSCHRAUBE D4X25 MIT FLANSCH (SCHWA	4		TAPPING SCREW (W/FLANG D4X25 (BLACK)
2	301-944	ARRETIERUNGSSTIFT G12S1/G12SA2/ G13YB1/G	1		PUSHING BUTTON
3	327-891		1	"INCLUD.2,15"	GEAR COV ASS'Y
4	309-191	SPEZIALMUTTER M6 G12SG/G15YC	1		SPECIAL N M6
5	327-889		1		PINION
6	628-VVC	KUGELLAGER 628VVC2PS2-L	1		BALL BEARING 628VVC2P:
7	327-887		1		BEARING HOLDER
8	360-799E		1		ARMATUR 220V-240V
9	327-886		1		FAN GUID
10	963-712	SECHSKANTSCHNEIDSCHRAUBE D4X65	2		HEX. HD. TAPPING SCREW D4
11	340-702E		1		STATOR 2/ 230V
11	340-702F		1		STATOR 2/
12	321-722	Staubdichtung G12SR2	1		DUST SEA
13	626-VVM	KUGELLAGER 626 VVM	1		BALL BEARING 626VVC2P:
14	309-929	GUMMIBUCHSE G12SG	1		RUBBER BUSHING
15	301-943	STIFT G12S1/G12SA2/G13YB1/G13V/ G13YD/G1	1		LOCK PIN
16	316-487		1		RETAININ RING FOR SHAFT
17	316-486		1		WAVE WASHER
	327-				

18	890		1		GEAR
19	987-201	#NAME?	2		SEAL LOC SCREW (W WASHER) M4X10
20	316-490	LAGERDECKEL G12S2/G13SD/G13V G13YD	1		BEARING COVER
21	620-1VV	KUGELLAGER 6201 VV	1		BALL BEARING 6201VVC
22	301-946	FILZDICHTUNG G12S1/G13YB1/FG12SA2 G13V/G	1		FELT PACI
23	316-489	GETRIEBEDECKEL G13SD	1		PACKING GLAND
24	951-039	#NAME?	4		MACHINE SCREW (W WASHER) M4X12
25	302-047	HALBMONDKEIL G12S2/G13SD	1		WOODRUF KEY
26	327-896		1		SPINDLE
27	308-386	#NAME?	2		MACHINE SCREW (W WASHER) M5X16(BL
28	301-949	ABLAGEBUGEL G12SR	1		SET PLATI
29	319-116	Schutzhaube kpl G13SR	1	"INCLUD.27,28"	WHEEL GUARD AS
30	937-817Z	SPANNFLANSCH G12S1/SA- SG/G13SB-YC G15YC/	1		WHEEL WASHER
31	316-822		1	"FOR INA,SIN,KUW,NZL,AUS"	D. C. WHEEL 125MM A3 (25 PCS.)
32	994-324	FLANSCHMUTTER G12S1/SA/G13V/ G13YD/G13SB	1		WHEEL NU M14
33	327-888		1	"INCLUD.5,18"	GEAR ASS
34	327-893		1		SLIDE BAF
35	314-429	FEDER G12SG/G13V/G13YD	1		SPRING
36	314-428	SCHIEBEKNOPF G12SG/G13V/G13YD G13SB2/G12	1		SLIDE KNO
37	327-885		1	INCLUD.14	HOUSING ASS'Y

38	327-895		2		BRUSH HOLDER
39	999-091	Kohlebursten-Paar (selbstabschaltend)	2		CARBON BRUSH (A STOP TYPE PAIR)
40	328-210		4		TAPPING SCREW D3
41	938-307	SCHRAUBKLEMME 1-REIHIG DIV TYPEN	1		PILLAR TERMINAL
42	314-603	SCHALTER G12SG/G13V/G13YD	1		SWITCH (1 SOLDER T
43	305-499	+KOPFSCHRAUBE M3 5X6 M U-SCHEIBE	2		MACHINE SCREW (W/WASHI M3.5X6
44	959-140	VERBINDER 50091 (10ST) DIV TYPEN	1	"EXCEPT FOR INA,SIN,KUW"	CONNECT 50091 (10 P
45	980-063	KABELSCHUH C7U/CJ65V2/H70SA/G13V G13YD/G	1	FOR NOISE SUPPRESSOR	TERMINAL
46	994-273	KONDENSATOR DIV TYPEN	1	"EXCEPT FOR INA,SIN,KUW"	NOISE SUPPRESS
47	328-509		1	"EXCEPT FOR INA,SIN,KUW"	INTERNAL WIRE
48			1		HITACHI LABEL
49	327-894		1		TAIL COVER
50			1		NAME PLATE
51	307-811	SCHNEIDSCHRAUBE D4X16 M FLANSCH	1		TAPPING SCREW (W/FLANG D4X16 (BLACK)
52	500-409Z	ANSCHLUSSKABEL MIT STECKER	1	(CORD ARMOR D8.8)	CORD
52	500-423Z		1	"(CORD ARMOR D8.8) FOR SIN,KUW"	CORD
52	500-439Z	Anschlusskabel Neue Art -Nr 714500	1	"(CORD ARMOR D8.8) FOR NZL,AUS"	CORD
52	500-447Z	Anschlusskabel	1	(CORD ARMOR D8.8) FOR SUI	CORD
52	500-468Z		1	(CORD ARMOR D8.8) FOR CHN	CORD
53	980-063	KABELSCHUH C7U/CJ65V2/H70SA/G13V G13YD/G	1	FOR CORD	TERMINAL

54	953-327	KABELKNICKSCHUTZ D8 8 DIV TYPEN	1		CORD ARM D8.8
55	937-631	KABELKLEMME DIV TYPEN	1		CORD CLI
56	984-750	SCHNEIDSCHRAUBE D4X16 MIT FLANSCH	2		TAPPING SCREW (W/FLANG D4X16
501	938-332Z	STIRNLOCHSCHLUSSEL G12SA/G13V G13YD/G13S	1		WRENCH
502	318-312		1		SIDE HAN
503	319-375		1	"FOR NZL,AUS"	CASE
601	314-062		1		SANDING DISCS 1251 C-P16 (10 F
602	314-063		1		SANDING DISCS 1251 C-P20 (10 F
603	314-064		1		SANDING DISCS 1251 C-P24 (10 F
604	314-065		1		SANDING DISCS 1251 C-P30 (10 F
605	314-066		1		SANDING DISCS 1251 C-P36 (10 F
606	314-067		1		SANDING DISCS 1251 C-P40 (10 F
607	314-068		1		SANDING DISCS 1251 C-P50 (10 F
608	314-069		1		SANDING DISCS 1251 C-P60 (10 F
609	314-070		1		SANDING DISCS 1251 C-P80 (10 F
610	314-071		1		SANDING DISCS 1251 C-P100 (10 PCS.)
611	314-072		1		SANDING DISCS 1251 C-P120 (10 PCS.)

612	937- 826Z	FLANSCHMUTTER G12GE/G12SG/G13V G13YD/G13	1		WASHER M
613	937- 825Z	ELASTISCHER SCHLEIFTELLER Neue Art -Nr	1		RUBBER P