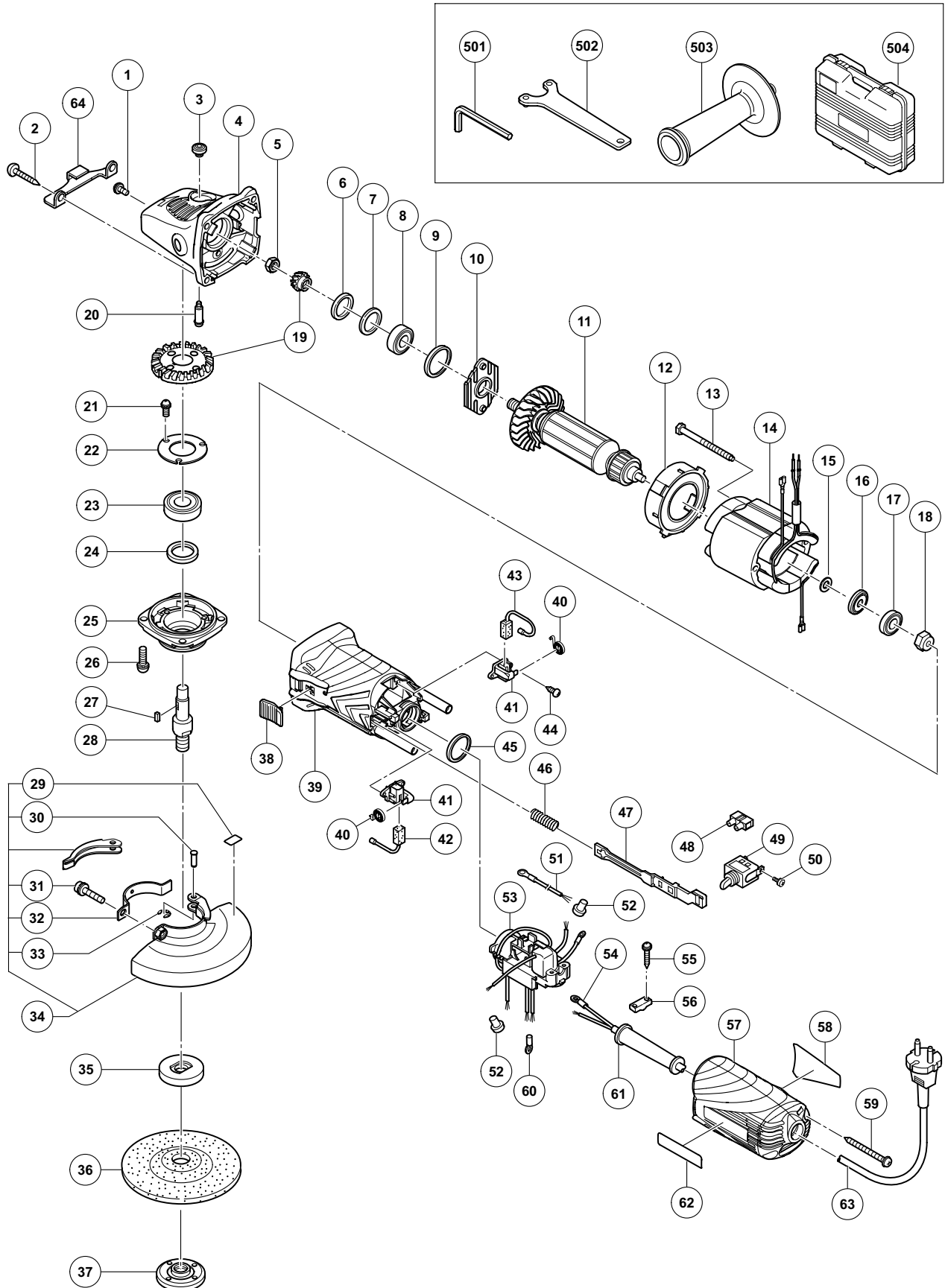


ELECTRIC TOOL PARTS LIST

DISC GRINDER
Model G 13YF

2009·8·31
(E1)



PARTS

G 13YF

ITEM NO.	CODE NO.	DESCRIPTION	NO. USED	REMARKS
1	303-255	SEAL LOCK SCREW (W/SP. WASHER) M4 X 10	2	
2	320-523	TAPPING SCREW D5 X 25 (BLACK)	4	
3	301-944	PUSHING BUTTON	1	
4	321-737	GEAR COVER ASS'Y	1	INCLUD. 3, 20
5	949-558	NUT M8 (10 PCS.)	1	
6	308-543	SEAL RING (A)	1	
7	980-866	WASHER (C)	1	
8	629-T12	BALL BEARING 629T12DDC3PS2-L	1	
9	957-754	RUBBER RING	1	
10	321-734	BEARING COVER	1	
* 11	360-869C	ARMATURE 110V	1	
* 11	360-869E	ARMATURE 230V-240V	1	
12	321-732	FAN GUIDE	1	
13	982-021	HEX. HD. TAPPING SCREW D4 X 70	2	
* 14	340-749C	STATOR 110V	1	
* 14	340-749E	STATOR ASS'Y 220V-240V	1	
15	311-737	THRUST WASHER	1	
16	311-435	DUST SEAL (A)	1	
17	608-VVM	BALL BEARING 608VVC2PS2L	1	
18	325-475	MAGNET	1	
19	329-054	GEAR AND PINION SET	1	
20	301-943	LOCK PIN	1	
21	991-207	SEAL LOCK SCREW (W/SP. WASHER) M4 X 8	3	
22	936-680	BEARING COVER (B)	1	
23	620-1DD	BALL BEARING 6201DDCMPS2L	1	
24	308-546	FELT PACKING	1	
25	308-545	PACKING GLAND	1	
26	307-046	SEAL LOCK SCREW (W/SP. WASHER) M5 X 16	4	
27	944-109	FEATHER KEY 3 X 3 X 8	1	
28	994-301	SPINDLE (A)	1	
29	311-492	LABEL	1	
30	311-744	SET PIN	1	
31	316-107	HEX. SOCKET HD. BOLT (W/WASHERS) M5 X 20	1	
32	311-491	SET PIECE (B)	1	
33	874-759	RETAINING RING (E-TYPE) FOR D2.5 SHAFT	1	
34	311-742	WHEEL GUARD ASS'Y	1	INCLUD. 29-33
35	937-817Z	WHEEL WASHER	1	
36	316-822	D. C. WHEELS 125MM A36Q (25 PCS.)	1	
37	994-324	WHEEL NUT M14	1	
38	330-810	SLIDE SWITCH KNOB	1	
39	330-808	HOUSING	1	
40	308-536	SPRING	2	
41	308-535	BRUSH HOLDER	2	
42	999-088	CARBON BRUSH (1 PAIR)	1	
43	999-076	CARBON BRUSH (AUTO STOP TYPE) (1 PAIR)	1	
44	306-945	TAPPING SCREW D3 X 10	4	
45	995-662	RUBBER RING	1	
46	314-429	SPRING	1	
47	330-811	SLIDE BAR	1	
48	938-307	PILLAR TERMINAL	1	

PARTS

G 13YF

ITEM NO.	CODE NO.	DESCRIPTION	NO. USED	REMARKS	
49	314-603	SWITCH (1P SOLDER TYPE)	1	INCLUD. 50	
50	305-499	MACHINE SCREW (W/WASHER) M3.5 X 6	2		
51	331-932	INTERNAL WIRE	1		
52	959-140	CONNECTOR 50091 (10 PCS.)	2		
*	53	330-815	CONTROLLER 110V-127V	1	
*	53	330-816	CONTROLLER 220V-240V	1	
54	980-063	TERMINAL	1		
55	984-750	TAPPING SCREW (W/FLANGE) D4 X 16	2		
56	937-631	CORD CLIP	1		
*	57	330-814	TAIL COVER	1	
*	57	331-934	TAIL COVER	1	FOR CARAT
*	58		NAME PLATE	1	EXCEPT FOR CARAT
59	331-933	TAPPING SCREW (W/FLANGE) D4 X 50 (BLACK)	2		
60	311-741	TERMINAL	1		
61	953-327	CORD ARMOR D8.8	1		
*	62		HITACHI LABEL	1	EXCEPT FOR CARAT
*	63	500-234Z	CORD	1	(CORD ARMOR D8.8)
*	63	500-247Z	CORD	1	(CORD ARMOR D8.8) FOR FIN, NOR, SWE, DEN
*	63	500-435Z	CORD	1	(CORD ARMOR D8.8) FOR GBR (230V)
*	63	500-461Z	CORD	1	(CORD ARMOR D8.8) FOR GBR (110V)
*	63	500-447Z	CORD	1	(CORD ARMOR D8.8) FOR SUI
*	63	500-235Z	CORD	1	(CORD ARMOR D8.8) FOR CARAT
*	64	331-931	STOP PIECE	1	EXCEPT FOR CARAT

STANDARD ACCESSORIES

G 13YF

ITEM NO.	CODE NO.	DESCRIPTION	NO. USED	REMARKS
* 501	944-458	HEX. BAR WRENCH 4MM	1	EXCEPT FOR CARAT
* 502	938-332Z	WRENCH	1	
* 502	325-491	WRENCH	1	FOR CARAT
* 503	325-496	SIDE HANDLE (VIBRATION-ABSORBING)	1	
* 503	994-322	SIDE HANDLE	1	FOR CARAT
* 504	323-712	CASE	1	FOR EUROPE

OPTIONAL ACCESSORIES

ITEM NO.	CODE NO.	DESCRIPTION	NO. USED	REMARKS
601	937-825Z	RUBBER PAD	1	
602	937-826Z	WASHER NUT	1	
603	314-062	SANDING DISCS 125MM C-P16 (10 PCS.)	1	
604	314-063	SANDING DISCS 125MM C-P20 (10 PCS.)	1	
605	314-064	SANDING DISCS 125MM C-P24 (10 PCS.)	1	
606	314-065	SANDING DISCS 125MM C-P30 (10 PCS.)	1	
607	314-066	SANDING DISCS 125MM C-P36 (10 PCS.)	1	
608	314-067	SANDING DISCS 125MM C-P40 (10 PCS.)	1	
609	314-068	SANDING DISCS 125MM C-P50 (10 PCS.)	1	
610	314-069	SANDING DISCS 125MM C-P60 (10 PCS.)	1	
611	314-070	SANDING DISCS 125MM C-P80 (10 PCS.)	1	
612	314-071	SANDING DISCS 125MM C-P100 (10 PCS.)	1	
613	314-072	SANDING DISCS 125MM C-P120 (10 PCS.)	1	
614	310-338	SUPER WASHER	1	