

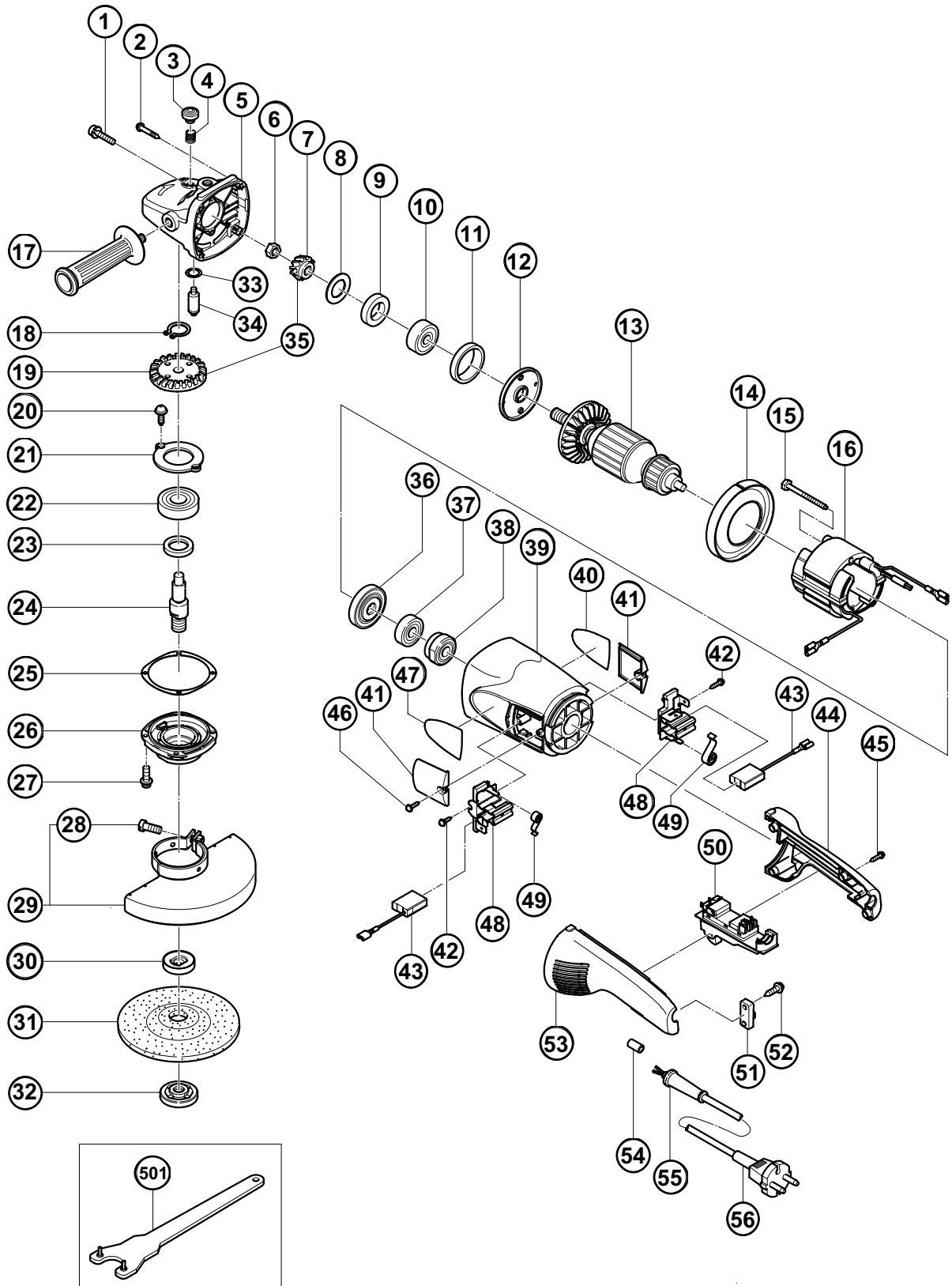
ELECTRIC TOOL PARTS LIST

DISC GRINDER

2001 · 9 · 25

Model G 18SH2

(E1)



PARTS

G 18SH2

| ITEM NO. | CODE NO. | DESCRIPTION | NO. USED | REMARKS |
|----------|----------|---|----------|------------------|
| 1 | 315-636 | SEAL LOCK SCREW (W/SP.WASHER)M5X14(BLACK) | 2 | |
| 2 | 301-654 | TAPPING SCREW (W/FLANGE) D5X35 | 4 | |
| 3 | 306-888 | PUSHING BUTTON | 1 | |
| 4 | 320-219 | SPRING | 1 | |
| 5 | 320-217 | GEAR COVER ASS'Y | 1 | INCLUD.3,4,33,34 |
| 6 | 320-226 | SPECIAL NUT M10 | 1 | |
| 7 | 320-243 | PINION | 1 | |
| 8 | 320-221 | SEAL WASHER | 1 | |
| 9 | 320-222 | FELT PACKING | 1 | |
| 10 | 630-1DD | BALL BEARING 6301DDCMPS2L | 1 | |
| 11 | 994-208 | RUBBER RING (B) | 1 | |
| 12 | 320-220 | BEARING COVER (A) | 1 | |
| 13 | 360-558E | ARMATURE 220V-240V | 1 | |
| 14 | 320-215 | FAN GUIDE | 1 | |
| 15 | 961-501 | HEX. HD. TAPPING SCREW D5X60 | 2 | |
| 16 | 340-501E | STATOR 220V-230V | 1 | |
| 17 | 937-981 | SIDE HANDLE FOR M14 | 1 | |
| 18 | 939-542 | RETAINING RING FOR D12 SHAFT (10 PCS.) | 1 | |
| 19 | 320-242 | GEAR | 1 | |
| 20 | 949-236 | MACHINE SCREW M5X10 (10 PCS.) | 2 | |
| 21 | 320-229 | BEARING COVER (B) | 1 | |
| 22 | 630-2DD | BALL BEARING 6302DDCMPS2L | 1 | |
| 23 | 990-852 | FELT PACKING (B) | 1 | |
| 24 | 320-234 | SPINDLE | 1 | |
| 25 | 320-228 | SEAL PLATE | 1 | |
| 26 | 320-227 | PACKING GLAND | 1 | |
| 27 | 994-192 | HEX. SOCKET HD. BOLT (W/FLANGE) M5X16 | 4 | |
| 28 | 306-887 | BOLT M8X22 | 1 | |
| 29 | 306-124 | WHEEL GUARD ASS'Y | 1 | INCLUD.28 |
| 30 | 937-907Z | WHEEL WASHER (A) | 1 | |
| 31 | 316-824 | D. C. WHEELS 180MM A24R (25 PCS.) | 1 | |
| 32 | 937-909Z | WHEEL NUT M14X2 | 1 | |
| 33 | 320-218 | O-RING | 1 | |
| 34 | 306-890 | LOCK PIN | 1 | |
| 35 | 320-241 | GEAR ASS'Y | 1 | INCLUD.7,19 |
| 36 | 320-216 | DUST SEAL | 1 | |
| 37 | 600-0VV | BALL BEARING 6000VVCMP2L | 1 | |
| 38 | 320-244 | BEARING BUSHING | 1 | |
| 39 | 320-214 | HOUSING ASS'Y | 1 | INCLUD.38 |
| 40 | | NAME PLATE | 1 | |
| 41 | 320-232 | BRUSH COVER | 2 | |
| 42 | 305-812 | TAPPING SCREW (W/FLANGE) D4X16 (BLACK) | 2 | |
| * 43 | 999-089 | CARBON BRUSH (AUTO STOP TYPE) (1 PAIR) | 1 | |
| * 43 | 999-061 | CARBON BRUSH 7X17X22.5 (1 PAIR) | 1 | |
| 44 | 320-231 | HANDLE (B) | 1 | |
| 45 | 305-812 | TAPPING SCREW (W/FLANGE) D4X16 (BLACK) | 4 | |
| 46 | 305-812 | TAPPING SCREW (W/FLANGE) D4X16 (BLACK) | 2 | |
| 47 | | HITACHI LABEL | 1 | |
| 48 | 320-233 | BRUSH HOLDER | 2 | |
| 49 | 320-245 | SPRING | 2 | |
| 50 | 320-239 | SWITCH (2P PILLAR TYPE) W/SAFETY LOCK | 1 | W/LOCK |

