

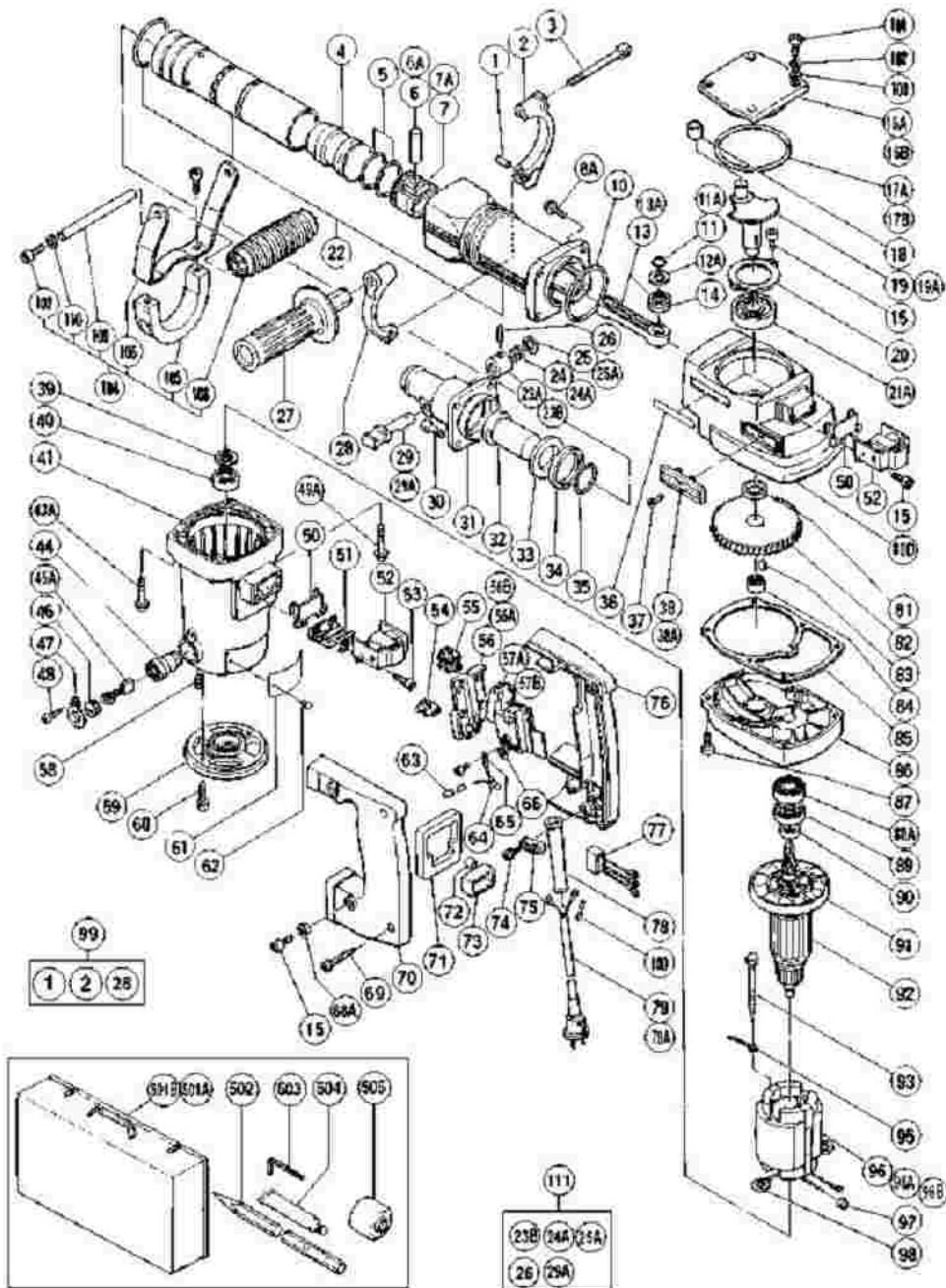
HITACHI

LIST NO. 0469

ELECTRIC TOOL PARTS LIST

■ HAMMER
Model H 55SA

2001·6·1
(E5-1)



H55SA

Pos. Nr.	Art. Nr.	Beschreibung	Stueck	Kommentar
1	949-747	ROLLSTIFT D6X25 (10ST)	1	(SINCE 1.2001 FOR GBR,SAF,FRA,SUI)
2	985-475	HANDGRIFFHALTER (A) H55SA/DH50SA1	1	(SINCE 1.2001 FOR GBR,SAF,FRA,SUI)
3	985-465	HANDGRIFFBOLZEN H55SA/DH50SA1	1	(SINCE 1.2001 FOR GBR,SAF,FRA,SUI)
4	985-455	ANSCHLAGER H55SA	1	
5	985-454	O-RING (A)(FPM810) H55SA/H60MA/MB	2	
6	985-451	KOLBENSTIFT H55SA	1	TILL 7.2000
6A	301-509	KOLBENSTIFT H60MA/MB	1	SINCE 8.2000
7	985-452	KOLBEN H55SA	1	TILL 7.2000
7A	317-084	KOLBEN H60MA/MB	1	SINCE 8.2000
8A	990-083	INBUSSCHRAUBE M8X35 M FLANSCH	4	
10	956-996	O-RING (1AS-60) DIV TYPEN	1	
11	939-542	SICHERUNGSRING D12 (10ST)	1	TILL 7.2000
11A	939-543	SICHERUNGSRING D14 (10ST)	1	SINCE 8.2000
12A	985-453	KURBELWELLEN-SCHEIBE H55SA	1	TILL 7.2000
13	985-450	PLEUEL KOMPLETT H55SA	1	INCLUD.14 TILL 7.2000
13A	317-082	PLEUEL H60MA/MB	1	SINCE 8.2000
14	985-470	NADELLAGER (B) (RNA4901V1)	1	TILL 7.2000
15	949-665	INBUSSCHRAUBE M5X14 (10ST)	8	
16A	985-449	KURBELGEHAUSEDECKEL BIS 03 1984 H55SA	1	TILL 3.1984
16B	986-957	KURBELGEHAUSEDECKEL AB 04 1984 H55SA	1	SINCE 4.1984

17A	985-448	O-RING (B) (S-80) H55SA	1	TILL 3.1984
17B	877-316	O-RING (S-90) H90SE/NV83A/NR83A	1	SINCE 4.1984
18	985-467	NADELLAGER-INNENRING H55SA	1	TILL 7.2000
19	985-444	KURBELWELLE H55SA	1	TILL 7.2000
19A	319-502		1	SINCE 8.2000
20	985-443	LAGERABDECKUNG H55SA/H60MA/MB	1	
21A	620-4DD	KUGELLAGER 6204 DD	1	
22	986-941	ZYLINDERGEHAUSE H55SA	1	
23A	985-466	FEDERKASTEN H55SA	1	TILL 3.1995
23B	993-241	FEDERHULSE DH50SA1/SB u a	1	SINCE 4.1995
24	981-937	ANSCHLAGFEDER DH38YB1/DH40FA u a	1	TILL 3.1995
24A	302-096	ANSCHLAGFEDER H55SA	1	SINCE 4.1995
25	985-463	HALTESCHEIBE H55SA	1	TILL 3.1995
25A	993-243	HULSE DH50SA1/SB/H55SA	1	SINCE 4.1995
26	943-364	NADELROLLE D4X20 DH40FA/FB/50SA1	1	
27	985-477	SEITENGRIF H55SA/DH50SA1	1	(SINCE 1.2001 FOR GBR,SAF,FRA,SUI)
28	985-476	HANDGRIFHALTER (B) H55SA/DH50SA1	1	(SINCE 1.2001 FOR GBR,SAF,FRA,SUI)
29	985-462	ANSCHLAGHEBEL H55SA (BIS 03 1995)	1	TILL 3.1995
29A	302-095	ANSCHLAGHEBEL H55SA (AB 04 1995)	1	SINCE 4.1995
30	985-479	INBUSSCHRAUBE M8X25 SELBSTSICH	4	
31	986-945	VORDERDECKEL H55SA	1	
32	986-944	ZWEITHAMMER H55SA	1	
33	986-943	DAMPFERSCHEIBE H55SA	1	

34	986-942	DAMPFER H55SA	1	
35	986-946	O-RING (C) (FPM810) H55SA	1	
36	957-561		1	
37	949-323	SENKKOPFSCHRAUBE M4X12 (10ST)	2	TILL 7.1987
38	980-735	LUFTFUHRUNG DH38YB/DH50SA/H45SA	2	TILL 7.1987
38A	991-713	LUFTFUHRUNG (B) DH38YB1 u a	2	SINCE 8.1987
39	985-436	STAUBSCHEIBE H55SA/DH50SA1/SB	1	
40	620-0VV	KUGELLAGER 6200 VV	1	
41	985-435	MOTORGEHAUSE KOMPL DH50SA1/SB	1	INCLUD.44,58
43A	994-084	INBUSSCHRAUBE M6X40 M FLANSCH	2	
44	983-362	KOHLLENHALTER C8U/9U/DH50SA1 u a	2	
45A	999-071	KOHLEBURSTEN SELBSTABSCH (PAAR)	2	
46	961-781	KOHLLENKAPPE C6U/CR12V u a	2	
47	981-959	KAPPENDECKEL DH28Y/DH38YB1 u a	2	
48	958-715	SCHNEIDSCHRAUBE D4X10	2	
49A	994-085	INBUSSCHRAUBE M6X60 M FLASCH	2	
50	980-750	FUHRUNGSPLATTE DH50SA1/SB u a	2	
51	985-469	KABELHALTER H55SA/H65SD/DH50SA1	1	
52	980-727	HANDGRIFFGUMMI DH50SA1/H55SA u a	2	
53	985-605	SCHNEIDSCHRAUBE D5X25 M U SCHEIBE	2	
54	938-307	SCHRAUBKLEMME 1-REIHIG DIV TYPEN	1	FOR GBR,ITA,FRG,FRA,HOL,DEN,AUT,SUI,US
			0	CAN,FIN,SWE,SAF,AUS

55	958-308Z	SCHRAUBKLEMME 2-REIHIG DIV TYPEN	1	FOR FIN
56	981-869	HALTERUNG DH28Y/H55SA	1	TILL 3.1987
56	981-986Z		1	TILL 3.1998 FOR AUS
56B	990-082		1	SINCE 4.1997,SINCE 4.1998 FOR AUS
57A	981-533Z	SCHALTER C8U/C9U	1	TILL 3.1998 FOR AUS
57A	995-398	SCHALTER (A) H45SA/H55SA	1	FOR FRG
57B	992-891	SCHALTER DIV BOHR-MEISSELHAMMER	1	SINCE 4.1998 FOR AUS
58	982-169	INBUSSTIFTSCHRAUBE M5X12	2	
59	985-437	GEHAUSEABDECKUNG H55SA/DH50SA1/SB	1	
60	985-480	SCHNEIDSCHRAUBE D5X20 M U-SCHEIBE	2	
61			1	
62	949-510	NIETE D 2 5 X 4 8 (10ST)	2	
63			2	
64	959-141	VERBINDER 50092 (10ST) DIV TYPEN	2	FOR NZL,GBR,ITA,FRG,FRA,HOL,SAF,DEN,AU
64			0	SUI,SWE,AUS
65	983-276Z	VERBINDERKABEL DH50SA1/H55SA	1	FOR NZL,GBR,ITA,FRG,FRA,HOL,SAF,DEN,AU
			0	SUI,FIN,SWE,AUS
66	949-423	UNTERLEGSCHLEIBE M4 (10ST)	1	
68A	991-711	DISTANZBUCHSE (B) DH38YB1/YF u a H45MR	4	
69	956-636		2	
70	983-273	HANDGRIFF (B) DH50SA1/H45SA u a	1	
71	980-751	GRIFFDICHTUNG DH50SA1/H65SB/SD	1	
72			1	

			0	TILL 4.1987
73	985-474	KABELHALTERUNG H55SA	1	FOR USA
74	984-750	SCHNEIDSCHRAUBE D4X16 MIT FLANSCH	2	
75	960-266	KABELKLEMME DIV TYPEN	1	
75	981-987Z		1	FOR SUI
76	983-272	HANDGRIFF (A) DH50SA1/H45SA u a	1	
77	994-273	KONDENSATOR DIV TYPEN	1	
78	958-049	KABELKNICKSCHUTZ D8 2 DIV TYPEN	1	
78	940-778	KABELKNICKSCHUTZ D10 7 DIV TYPEN	1	
79	500-390Z		1	(CORD ARMOR D10.7) FOR ITA,FRG,FRA,HOL,
			0	DEN,AUT,FIN,SWE,SAF
79	500-391Z		1	(CORD ARMOR D10.7) FOR SUI
79	500-407Z		1	(CORD ARMOR D10.7) FOR USA,CAN
79	500-408Z		1	(CORD ARMOR D10.7) FOR AUS,NZL
79A	500-460Z		1	(CORD ARMOR D10.1) FOR GBR(110V)
79B	500-446Z		1	(CORD ARMOR D10.7) FOR GBR(230V)
80D	986-968	KURBELGEHAUSE M DECKEL KOMPL H55SA	1	INCLUD.16B,17B,38A,101-103
81	985-445	DISTANZRING (B) H55SA	1	
82	985-446	ERSTES ZAHNRAD H55SA	1	
83	932-815	SCHEIBENKEIL 3X3 DH50SA/H45SA	1	
84	985-442	NADELLAGER (A) BK1512	1	
85	985-447	DICHTUNGSPACKUNG H55SA	1	TILL 11.1986
86	985-440	GETRIEBEDECKEL H55SA	1	

87	949-660	INBUSSCHRAUBE M6X20 (10ST)	4	
88A	620-2VV	KUGELLAGER 6202 VV	1	
89	985-439	OILDICHTUNG H55SA/DH50SA1/SB	1	
90	985-438	BUCHSE DH50SA1/SB/H55SA	1	
91	985-482	VENTILATOR H55SA/DH50SA1	1	
92	985-472U		1	INCLUD.39,40,88A,90,91
92	985-472E	ANKER 220V-230V DH50SA1/SB/H55SA	1	INCLUD.91
92	985-472F		1	INCLUD.91
93	961-400	SCHNEIDSCHRAUBE D5X70	2	
95	986-277	VERBINDERKABEL DH20V/DH25V u a H70SA	1	FOR ITA,FRG,FRA,HOL,AUT,FIN,AUS
95	971-776	INNENVERDRAHTUNG DH25V/DH28Y u a	1	FOR NZL,GBR,DEN,SUI,SWE
95	971-825	VERBINDERKABEL CS35B/H55SA/VRV16	1	FOR SAF
96	985-471C		1	INCLUD.98
96	985-471E		1	INCLUD.98
96	985-471J		1	INCLUD.98 FOR GBR
96A	985-471G		1	INCLUD.98 FOR ITA,SWE,AUT,SAF,NZL
96A	985-471H		1	INCLUD.98 TILL 3.1998 FOR AUS
96B	985-471F	STATOR 230V-240V DH50SA/SA1/H55SA	1	INCLUD.98 FOR GBR,FRG,FRA,HOL,DEN,ESP,
			0	FIN,SUI,SINCE 4.1998 FOR AUS
97	959-140	VERBINDER 50091 (10ST) DIV TYPEN	1	FOR NZL,GBR,ITA,FRG,FRA,HOL,SAF,DEN,AU
			0	SUI,SWE,AUS
98	937-623	KOHLLENHALTERKLEMMER BM25Y/C8U/C9U/DH50SA	2	
99	985-464	HANDGRIFFHALTER H55SA/DH50SA1	1	INCLUD.1,2,28 (SINCE 1.2001 FOR GBR,S
			0	FRA,SUI)

100			2	
101	990-079	INBUSSCHRAUBE M5X16 SELBSTSICH	4	
102	949-454	FEDERSCHEIBE M5 (10ST)	4	
103	949-424	UNTERLEGSCHLEIBE M5 (10ST)	4	
104	986-959	HANDGRIFFHALTER KOMPL H55SA	1	INCLUD.105-110 SINCE 1.1986-TILL 12.20
			0	FOR GBR,SAF,FRA,SUI
105	986-960		1	SINCE 1.1986-TILL 12.2000 FOR GBR,SAF
			0	FRA,SUI
106	986-961		1	SINCE 1.1986-TILL 12.2000 FOR GBR,SAF
			0	FRA,SUI
107	949-656	INBUSSCHRAUBE M8X20 (10ST)	4	SINCE 1.1986-TILL 12.2000 FOR GBR,SAF
			0	FRA,SUI
108	944-951		1	SINCE 1.1986-TILL 12.2000 FOR GBR,SAF
			0	FRA,SUI
109	986-962		1	SINCE 1.1986-TILL 12.2000 FOR GBR,SAF
			0	FRA,SUI
110	986-963		2	SINCE 1.1986-TILL 12.2000 FOR GBR,SAF
			0	FRA,SUI
111	310-891		1	INCLUD.23B,24A,25A,26,29A
112	319-842		1	INCLUD.6A,7A,11A,13A,19A
501C	319-783	Plastikkoffer H55SB	1	
502	986-947	SPITZMEISSEL 300MM 21MM 6-KANT Neue Art	1	
503	872-422	INBUSSCHLUSSEL D6(M8)	1	
504	981-840	HAMMERFETT (A) 30G	1	
505	985-468	STAUBSCHUTZKAPPE H55SA/DH50SA1	2	