

Hitachi Power Tools

LIST NO. E483

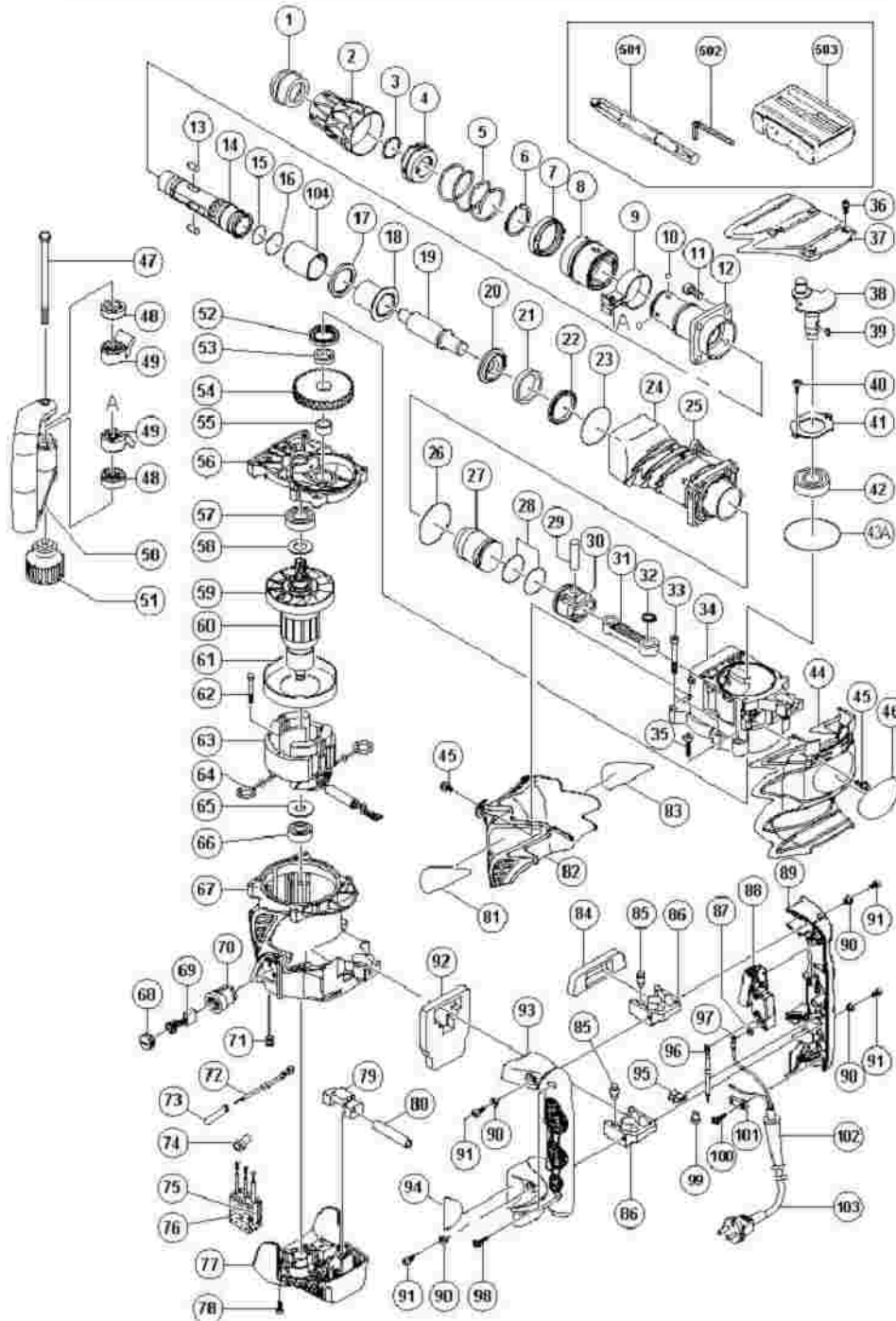
ELECTRIC TOOL PARTS LIST

■ **DEMOLITION HAMMER**

2006 · 6 · 1

Model H 60MR

(E1-2)



H60MR

Pos. Nr.	Art. Nr.	Beschreibung	Stueck	Kommentar	Beschreibung
1	315-529	VORDERKAPPE H45MA/H60MA/MB H45MR	1		FRONT CAP
2	324-025	Griff (A) H60MRV	1		GRIP (A)
3	320-803	RING H45MR	1		RING
4	320-804	NADELHALTER H45MR	1		NEEDLE HOLDER
5	324-027	Feder (A) H60MRV	1		SPRING (A)
6	317-088	SICHERUNGSRING D42 H60MA/MB H45MR	1		RETAINING RING D42
7	320-810	KUGELHALTER H45MR	1		BALL HOLDER
8	324-028	Griff (B) H60MRV	1		GRIP (B)
9	320-635	BAND H60MA/MB/H45MR	1		BAND
10	959-150	STAHLKUGEL D6 35 (10ST)	4		STEEL BALL D6.35 (10 PCS.)
11	985-479	INBUSSCHRAUBE M8X25 SELBSTSICH	4		SEAL LOCK HEX. SOCKET HD. BOLT M8X25
12	324-029	Vorderdeckel H60MRV	1		FRONT COVER
13	313-421	NADELROLLE D8X20 DH40MA/MB H45MR	2		NEEDLE ROLLER D8X20
14	324-026	Werkzeugaufnahme H60MRV	1		RETAINER SLEEVE
15	872-470	O-RING (S-26) DH20V/DH22VD u a VB16Y	1		O-RING (S-26)
16	872-767	O-RING (S-32) DH25V/W6VE/W6VF	1		O-RING (S-32)
17	317-094	DAMPFER (B) H60MA/MB	1		DAMPER (B)
18	324-030	Hammerhalter (B) H60MRV	1		HAMMER HOLDER (B)
19	324-031	Zweithammer H60MRV	1		SECOND HAMMER
20	317-091	HAMMERHALTER (A) H60MA/MB	1		HAMMER HOLDER (A)
21	324-032	Dampfer (A) H60MRV	1		DAMPER (A)
	317-				

22	095	DAMPFERSCHEIBE H60MA/MB	1		DAMPER WASHER
23	317-119	O-RING (S-56) H60MA/MB	1		O-RING (S-56)
24	324-034	Zylindergehäuse H60MRV	1		CYLINDER CASE
25	995-400	Inbusschraube M8x30	4		HEX. SOCKET HD. BOLT (W/FLANGE) M8X30
26	956-996	O-RING (1AS-60) DIV TYPEN	1		O-RING (1AS-60)
27	324-033	Anschlager H60MRV	1		STRIKER
28	985-454	O-RING (A)(FPM810) H55SA/H60MA/MB	2		O-RING (A) (FPM810)
29	301-509	KOLBENSTIFT H60MA/MB	1		PISTON PIN
30	317-084	KOLBEN H60MA/MB	1		PISTON
31	317-082	PLEUEL H60MA/MB	1		CONNECTING ROD
32	939-543	SICHERUNGSRING D14 (10ST)	1		RETAINING RING FOR D14 SHAFT (10 PCS.)
33	301-567	INBUSSCHRAUBE M6X55 SELBSTSICH	4		SEAL LOCK HEX. SOCKET HD. BOLT M6X55
34	324-035	Kurbelgehäuse H60MRV	1		CRANK CASE
35	324-056	Schraube M6x35	2		SEAL LOCK HEX. SOCKET HD. BOLT M6X35
36	990-079	INBUSSCHRAUBE M5X16 SELBSTSICH	4		SEAL LOCK HEX. SOCKET HD. BOLT M5X16
37	324-037	Kurbelgehäuse H60MR	1		CRANK COVER
38	317-078	KURBELWELLE H60MA/MB	1		CRANK SHAFT
39	940-533	KEIL 3X3X10 G13SC/G15SA u a	1		FEATHER KEY 3X3X10
40	984-509	INBUSSCHRAUBE M5X14 SELBSTSICH	2		SEAL LOCK HEX. SOCKET HD. BOLT M5X14
41	985-443	LAGERABDECKUNG H55SA/H60MA/MB	1		BEARING COVER
42	620-4DD	KUGELLAGER 6204 DD	1		BALL BEARING 6204DDCMPS2L

43A	326-257	O-RING H60MR	1		O-RING (I.D 74.5)
44	324-038	Hintere Abdeckung H60MRV	1		BACK COVER
45	998-471	INBUSSCHRAUBE M5X12	3		HEX. SOCKET HD. BOLT (W/FLANGE) M5X12
46			1		NAME PLATE
47	317-107	SCHRAUBE M8 H60MA/MB/H45MR	1		BOLT M8
48	317-106	HANDGRIFFHALTER (B) H60MA/MB H45MR	2		HANDLE HOLDER (B)
49	317-105	HANDGRIFFHALTER (A) H60MA/MB H45MR	2		HANDLE HOLDER (A)
50	317-103	SEITENGRIF KOMPLETT H60MA/MB H45MR	1	"INCLUD.9,47-49,51"	SIDE HANDLE ASS'Y
51	317-108	GRIFF H60MA/MB/H45MR	1		GRIP
52	995-403	OLDICHTUNG H60MA/MB	1		OIL SEAL
53	995-402	DISTANZRING (C) H60MA/MB	1		DISTANCE RING (C
54	317-080	ERSTES ZAHNRAD H60MA/MB	1		FIRST GEAR
55	985-442	NADELLAGER (A) BK1512	1		NEEDLE BEARING (A) (BK1512)
56	324-048	Getriebedeckel H60MRV	1	INCLUD.55	GEAR COVER ASS'Y
57	620-3DD	KUGELLAGER 6203 DD	1		BALL BEARING 6203DDCMPS2L
58	992-841	LAGERSCHEIBE H60MA/MB/H90SC/SE	1		BEARING WASHER
59	996-370	LUFTERFLUGEL H60MA/MB/H65SB u a H70SA	1		FAN
60	360-691U		1	"INCLUD.57-59,65,66"	ARMATURE ASS'Y 120V
60	360-691E	Anker kpl 230V H60MRV	1	INCLUD.59	ARMATURE ASS'Y 230V
61	305-610	LUFTFUHRUNG H60MA/MB/H90SC/SE	1		FAN GUIDE
62	953-121	SECHSKANTSCHNEIDSCHRAUBE D5X50	2		HEX. HD. TAPPING SCREW D5X50
63	340-608G		1	INCLUD.64	STATOR ASS'Y 120V
63	340-608E	Stator kpl 230V H60MR	1	INCLUD.64	STATOR ASS'Y 230V

64	945-932	KOHLLENHALTERKLEMME H60MA/MB u a H70SA	2		BRUSH TERMINAL
65	944-954	LAGERSCHEIBE F30A/H65SB/SD u a H70SA	1		BEARING WASHER
66	620-1DD	KUGELLAGER 6201 DD	1		BALL BEARING 6201DDCMPS2L
67	324-055		1	"INCLUD.70,71"	HOUSING ASS'Y
68	940-540	KOHLLENKAPPE C13U/M12V/DIV TYPEN H70SA	2		BRUSH CAP
69	999-074	KOHLLEBURSTEN SELBSTABSCH (PAAR)	2		CARBON BRUSH (AUTO STOP TYPE) (1 PAIR)
70	956-984	KOHLLENHALTER H60MA/MB/H65SB/SD H70SA	2		BRUSH HOLDER
71	938-477	INBUSSTIFTSCHRAUBE M5X8	2		HEX. SOCKET SET SCREW M5X8
72	324-122		1	"EXCEPT FOR USA,CAN"	INTERNAL WIRE 235L
73			2		VINYL TUBE (I.D.7XT0.5X30)
73	000-008D		0	"FOR USA,CAN"	
74	959-140	VERBINDER 50091 (10ST) DIV TYPEN	1	"EXCEPT FOR USA,CAN"	CONNECTOR 50091 (10 PCS.)
75	994-273	KONDENSATOR DIV TYPEN	1	"EXCEPT FOR USA,CAN"	NOISE SUPPRESSOR
76	317-492	POLSTER (B) DH25PB/H30PV/DH30PC H45MR	1	"EXCEPT FOR USA,CAN"	SUPPORT (B)
77	324-041	Enddeckel H60MRV	1		TAIL COVER
78	317-245	INBUSSCHRAUBE M5X22 SELBSTSICH	2		SEAL LOCK HEX. SOCKET HD. BOLT M5X22
79	324-045	Hulse (B) H60MRV	1		SLEEVE (B)
80			1		VINYL TUBE (I.D.9.5XT0.56X85)
81			1		HITACHI LABEL
82	324-036	Kurbelgehusedeckel H60MRV	1		CRANK CASE COVER
83			1		HITACHI LABEL
84	324-046	Handgriffdichtung (A) H60MR	1		HANDLE PACKING (A)
85	310-124	HANDGRIFFDAMPFER H41SA/H45MA u a H70SA/	8		HANDLE DAMPER

86	310-123	DAMPFERBEFESTIGUNG H41SA/H45MA u a H45MR	2		TRANSATORY UNIT
87	949-423	UNTERLEGSCHLEIBE M4 (10ST)	1	"EXCEPT FOR USA,CAN"	WASHER M4 (10 PCS.)
88	306-143	SCHALTER (B) H45MA/H60MA/MB u a H45MR	1		SWITCH (B) (1P SCREW TYPE) W/LOCK
89	324-042	Handgriff (A) H60MRV	1		HANDLE (A)
90	991-711	DISTANZBUCHSE (B) DH38YB1/YF u a H45MR	4		DISTANCE PIECE (B)
91	991-690	INBUSSCHRAUBE M5X12 SELBSTSICH	4		SEAL LOCK HEX. SOCKET HD. BOLT M5X12
92	324-047	Handgriffdichtung (B) H60MR	1		HANDLE PACKING (B)
93	324-043	Handgriff (B) H60MR	1		HANDLE (B)
94			1		SDS MAX LABEL
95	938-307	SCHRAUBKLEMME 1-REIHIG DIV TYPEN	1		PILLAR TERMINAL
96	981-974	VERBINDERKABEL DH28Y/H41SA/H45MR H60MA/M	1	"EXCEPT FOR USA,CAN"	INTERNAL WIRE
97	980-063	KABELSCHUH C7U/CJ65V2/H70SA/G13V G13YD/G	1	"EXCEPT FOR USA,CAN,SUI"	TERMINAL
98	307-028	SCHNEIDSCHRAUBE D4X25 MIT FLANSCH (SCHWA	3		TAPPING SCREW (W/FLANGE) D4X25 (BLACK)
99	959-141	VERBINDER 50092 (10ST) DIV TYPEN	1	"EXCEPT FOR USA,CAN"	CONNECTOR 50092 (10 PCS.)
100	984-750	SCHNEIDSCHRAUBE D4X16 MIT FLANSCH	2		TAPPING SCREW (W/FLANGE) D4X16
101	960-266	KABELKLEMME DIV TYPEN	1		CORD CLIP
101	981-987Z		1	FOR SUI	CORD CLIP
102	953-327	KABELKNICKSCHUTZ D8 8 DIV TYPEN	1		CORD ARMOR D8.8
103	500-390Z		1	(CORD ARMOR D8.8)	CORD
103	500-391Z		1	(CORD ARMOR D8.8) FOR SUI	CORD
103	500-434Z		1	"(CORD ARMOR D8.8) FOR USA,CAN"	CORD
	324-				

104	130	Dampfer (C) H60MRV	1		DAMPER (C)
501	313-471		1		BULL POINT (SDS MAX) 280L
502	872-422	INBUSSCHLUSSEL D6(M8)	1		HEX. BAR WRENCH 6MM
503	324-049	Transportkoffer H60MRV	1		CASE (PLASTIC)
601	981-840	HAMMERFETT (A) 30G	1		GREASE (A) FOR HAMMER.HAMMEF DRILL (30G)
602	308-471	HAMMERFETT 70G TUBE	1		GREASE FOR HAMMER.HAMMEF DRILL (70G)
603	980-927	HAMMERFETT 500G	1	"EXCEPT FOR USA,CAN"	GREASE FOR HAMMER.HAMMEF DRILL (500G)
604	313-471		1		BULL POINT (SDS MAX) 280L
605	313-472		1		BULL POINT (SDS MAX) 400L
606	313-473		1		COLD CHISEL (SDS MAX) 280MM
607	313-474		1		COLD CHISEL (SDS MAX) 400MM
608	313-475		1		CUTTER (SDS MAX W50X400L
609	313-476		1		SCOOP (SDS MAX) 400L
610	313-477		1		BUSHING TOOL (SDS MAX)
611	313-478		1		RAMMER (SDS MAX) 150MM X 150MM
612	313-479		1		"SHANK (SDS MAX) FOR RAMMER,BUSHING TOOL"