

# Hitachi Power Tools

LIST NO. E459

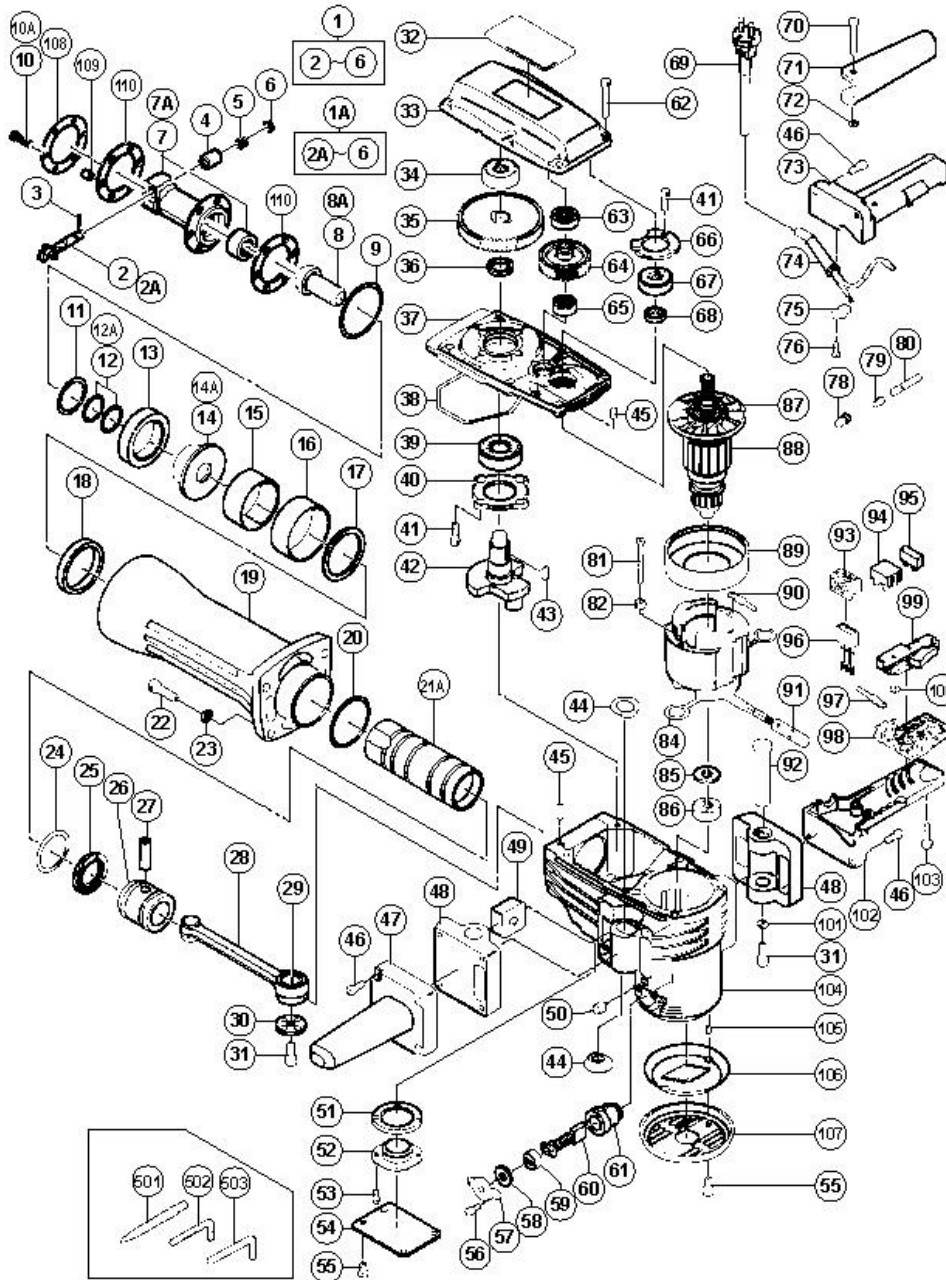
## ELECTRIC TOOL PARTS LIST

■ HAMMER

2005 • 12 • 1

Model H 70SA

(E1-1)



## H70SA

Pos. Nr.	Art. Nr.	Beschreibung	Stueck	Kommentar	Beschreibung
1	318-656	ANSCHLAGHEBEL KOMPLETT H70SA	1	"INCLUD.2,3-6 TILL 6.2005"	STOP LEVER ASS'Y
1A	323-747	Anschlaghebel H65SB2	1	INCLUD.2A-6 SINCE 7.2005	STOP LEVER ASS'Y
2	998-423	ANSCHLAGHEBEL H65SB/H70SA	1	TILL 6.2005	STOP LEVER
2A	323-748	Anschlaghebel H65SB2	1	SINCE 7.2005	STOP LEVER
3	998-426	NADELROLLE H65SB/H70SA	1		NEEDLE ROLLER
4	998-424	FEDERHULSE H65SB/H70SA	1		SPRING CASE
5	956-975	ANSCHLAGFEDER H65SB/H70SA	1		LEVER SPRING
6	998-425	DAMPFER (B) H65SB/H70SA	1		DAMPER (B)
7	998-435	VORDERDECKEL H65SB/H70SA	1	TILL 6.2005	FRONT COVER
7A	323-733	Vordergehäuse kpl H65SB2	1	SINCE 7.2005	FRONT COVER
8	998-420	ZWEITHAMMER H65SB/H70SA	1	TILL 6.2005	SECOND HAMMER
8A	323-732	Zweithammer H65SB2	1	SINCE 7.2005	SECOND HAMMER
9	998-428	O-RING (C) H65SB/SD/H70SA	1		O-RING (C)
10	306-437	INBUSSCHRAUBE M8X30 SELBSTSICH	6	TILL 6.2005	NYLOCK HEX. SOCKET HD. BOLT M8X30
10A	323-734	Sechskantschraube M8x40	6	SINCE 7.2005	NYLOCK HEX. SOCKET HD. BOLT M8X40
11	998-427	O-RING (B) H65SB/SD/H70SA	1		O-RING (B)
12	998-419	O-RING (E) H65SB/SD/H70SA	1	TILL 6.2005	O-RING (E)
12A	323-731	O-Ring H65SB2	2	SINCE 7.2005	O-RING (I.D 26.5)
13	998-433	DAMPFER (A) H65SB/SD/H70SA	1		DAMPER (A)
14	998-418	SCHAFTBUCHSE H65SB/SD/H70SA	1	TILL 6.2005	SHANK SLEEVE
14A	323-730	Buchse H65SB2	1	SINCE 7.2005	SHANK SLEEVE

15	956-963	RING H65SB/SD/H70SA	1		MOUTH
16	956-962	RINGABDECKUNG H65SB/SD/H70SA	1		MOUTH COVER
17	956-961	U-SCHEIBE H65SB/SD/H70SA	1		MOUTH WASHER
18	956-960	URETHANRING H65SB/SD/H70SA	1		URETHANE RING
19	319-359	ZYLINDERGEHAUSE H70SA	1		CYLINDER CASE
20	956-996	O-RING (1AS-60) DIV TYPEN	1		O-RING (1AS-60)
21	956-958	ANSCHLAGER H65SB/SD/H70SA	1	TILL 6.2005	STRIKER
21A	323-724	Anschlager H65SB2	1		STRIKER
22	306-163	INBUSSCHRAUBE M8X35 SELBSTSICH	4		NYLOCK HEX. SOCKET HD. BOLT M8X35
23	949-433	UNTERLEGSCHIEBE M8 (10ST)	4		BOLT WASHER M8 (10 PCS.)
24	998-414	O-RING (A) H65SB/SD/H70SA	1		O-RING (A)
25	998-415	OLDICHTUNG (A) H65SB/SD/H70SA	1		OIL SEAL (A)
26	998-413	KOLBEN H65SB/SD/H70SA	1		PISTON
27	944-928	KOLBENSTIFT H65SB/SD/H70SA	1		PISTON PIN
28	998-434	PLEUEL KOMPLETT H65SB/SD/H70SA	1	INCLUD.29	CONNECTING ROD ASS'Y
29	944-921	NADELLAGER(NTN8E-NK18/20RDO)	1		NEEDLE BEARING (NTN 8E-NK 18/20 RDO)
30	956-955	U-SCHEIBE KURBELWELLE H65SB/SD H70SA	1		CRANK WASHER
31	996-364	INBUSSCHRAUBE M8X16 SELBSTSICH	3		SEAL LOCK HEX. SOCKET HD. BOLT M8X16
32			1		NAME PLATE
33	319-360	GETRIEBEGEHAUSE H70SA	1		GEAR COVER
34	630-2VV	KUGELLAGER 6302VV	1		BALL BEARING 6302VVCMP2L
35	944-916	ZAHNRAD H65SB/SD/H70SA	1		FINAL GEAR

36	944-915	ABSTANDSCHEIBE (B) H65SB/SD/H70SA	1		DISTANCE RING (B)
37	998-412	INNENDECKEL H65SB/SD/H70SA	1		INNER COVER
38	957-143	DICHTUNGSRING (A) H65SB/SD/H70SA	1		SEAL RING (A)
39	620-5DD	KUGELLAGER 6205 DD	1		BALL BEARING 6205DDCMPS2L
40	956-949	LAGERDECKEL H65SB/SD/H70SA	1		BEARING COVER
41	990-079	INBUSSCHRAUBE M5X16 SELBSTSICH	7		SEAL LOCK HEX. SOCKET HD. BOLT M5X16
42	998-430	KURBELWELLE H65SB/SD/H70SA	1		CRANK SHAFT
43	956-850	HALBMONDKEIL 4X16 H65SB/SD/H70SA	2		WOODRUFF KEY 4X16
44	318-655	DAMPFER (B) H90SE/H70SA	4		DAMPER (B)
45	944-918	ROLLSTIFT D5X15 8 H65SB/SD/H70SA	2		PIN D5X15.8
46	993-496	INBUSSCHRAUBE M6X30 SELBSTSICH	8		SEAL LOCK HEX. SOCKET HD. BOLT M6X30
47	305-633	SEITENGRIFF H90SC/SE/H70SA	1		SIDE HANDLE
48	319-365	HANDGRIFFHALTER H70SA	2		HANDLE HOLDER
49	319-364	HANDGRIFFDAMPFER (B) H70SA	2		HANDLE DAMPER (B)
50	310-124	HANDGRIFFDAMPFER H41SA/H45MA u a H70SA/	4		HANDLE DAMPER
51	956-969	DICHTUNG H70SA	1		HOLDER SEAL
52	998-416	HALTER H70SA	1		HOLDER
53	987-203	#NAME?	4		SEAL LOCK SCREW (W/SP. WASHER) M4X12
54	998-417	ABDECKPLATTE H70SA	1		COVER PLATE
55	991-690	INBUSSCHRAUBE M5X12 SELBSTSICH	6		SEAL LOCK HEX. SOCKET HD. BOLT M5X12
56	983-162	INBUSSCHRAUBE M4X12 SELBSTS	4		SEAL LOCK HEX. SOCKET HD. BOLT M4X12

57	956-972	KAPPENDECKEL H65SB/SD/H70SA	2		CAP COVER
58	944-960	KAPPENGUMMI H65SB/SD/H70SA	2		CAP RUBBER
59	940-540	KOHLLENKAPPE C13U/M12V/DIV TYPEN H70SA	2		BRUSH CAP
60	999-086	Abschaltkohlebursten (Paar)	2		CARBON BRUSH (AUTO STOP TYPE) (1 PAIR)
61	956-984	KOHLLENHALTER H60MA/MB/H65SB/SD H70SA	2		BRUSH HOLDER
62	986-940	INBUSSCHRAUBE M6X45 SELBSTSICH	6		SEAL LOCK HEX. SOCKET HD. BOLT M6X45
63	620-1VV	KUGELLAGER 6201 VV	1		BALL BEARING 6201VVCMP2L
64	956-948	GEGENZAHNRAD H65SB/SD/H70SA	1		COUNTER GEAR
65	600-1VV	KUGELLAGER 6001 VV	1		BALL BEARING 6001VVCMP2L
66	944-911	LAGERDECKEL (A) H65SB/SD/H70SA	1		BEARING COVER (A)
67	620-3DD	KUGELLAGER 6203 DD	1		BALL BEARING 6203DDCMP2L
68	944-907	DISTANZRING (A) H65SB/SD/H70SA	1		DISTANCE RING (A)
69	500-390Z		1	(CORD ARMOR D10.7)	CORD
69	500-408Z		1	"(CORD ARMOR D8.2) FOR AUS,NZL"	CORD
69	500-466Z		1	(CORD ARMOR D10.7) FOR GBR (110V)	CORD
69	500-450Z		1	(CORD ARMOR D10.7) FOR GBR (230V)	CORD
69	500-458Z		1	(CORD ARMOR D10.7) FOR SAF	CORD
69	500-391Z		1	(CORD ARMOR D10.7) FOR SUI	CORD
69	500-206Z		1	(CORD ARMOR D10.7) FOR VEN	CORD
70	992-870	STIFT H90SC/SE/H70SA	1		PIN
71	992-869	SCHALTERHEBEL H90SC/SE/H70SA	1		SWITCH LEVER
					RETAINING RING

72	968-643	SICHERUNGSRING D4 (E-TYPE)	1		(E-TYPE) FOR D4 SHAFT
73	305-636	HANDGRIFF (A) H90SC/SE/H70SA	1		HANDLE (A)
74	958-049	KABELKNICKSCHUTZ D8 2 DIV TYPEN	1		CORD ARMOR D8.2
74	940-778	KABELKNICKSCHUTZ D10 7 DIV TYPEN	1		CORD ARMOR D10.7
75	960-266	KABELKLEMME DIV TYPEN	1		CORD CLIP
75	981-987Z		1	FOR SUI	CORD CLIP
76	982-095	SCHNEIDSCHRAUBE D4X20 M U-SCHEIBE	2		TAPPING SCREW (W/WASHER) D4X20
77	980-063	KABELSCHUH C7U/CJ65V2/H70SA/G13V G13YD/G	1	FOR CORD	TERMINAL
77	930-804	KABELSCHUH M4 0 (10ST)	1	(FOR CORD) FOR VEN	TERMINAL M4.0 (10 PCS.)
78	959-141	VERBINDER 50092 (10ST) DIV TYPEN	2	EXCEPT FOR FIN	CONNECTOR 50092 (10 PCS.)
79	959-140	VERBINDER 50091 (10ST) DIV TYPEN	1	EXCEPT FOR FIN	CONNECTOR 50091 (10 PCS.)
80			2		VINYL TUBE (I.D7XT0.5X50)
81	960-251	SCHNEIDSCHRAUBE D5X65 (DIV TYPEN)	2		HEX. HD. TAPPING SCREW D5X65
82	956-764	SPEZIALSCHEIBE H65SB/SD/H70SA u a	2		SPECIAL WASHER
83	340-488C		1	INCLUD.84	STATOR ASS'Y 110V
83	340-488E	STATOR KOMPLETT 230V H70SA	1	INCLUD.84	STATOR ASS'Y 230V
83	340-488F		1	INCLUD.84	STATOR ASS'Y 240V
84	945-932	KOHLLENHALTERKLEMME H60MA/MB u a H70SA	2		BRUSH TERMINAL
85	944-954	LAGERSCHEIBE F30A/H65SB/SD u a H70SA	1		BEARING WASHER
86	620-1DD	KUGELLAGER 6201 DD	1		BALL BEARING 6201DDCMPS2L
87	996-370	LUFTERFLUGEL H60MA/MB/H65SB u a H70SA	1		FAN
88	360-286C		1	INCLUD.87	ARMATURE ASS'Y 110V-115V

88	360-286E	ANKER 220V-230V H65SB/SD/H70SA	1	INCLUD.87	ARMATURE ASS'Y 220V-230V
88	360-286F		1	INCLUD.87	ARMATURE ASS'Y 240V
89	306-098	LUFTFUHRUNG H65SB/SD/H70SA	1		FAN GUIDE
90	986-277	VERBINDERKABEL DH20V/DH25V u a H70SA	1		INTERNAL WIRE
91	319-363	KUNSTSTOFFSCHLAUCH H70SA	1		VINYL TUBE
92	319-366	HANDGRIFFSTIFT H70SA	2		HANDLE PIN
93	930-153	POLSTER (B) SELBSTKLEB DIV TYPEN	1		SUPPORT (B)
94	958-308Z	SCHRAUBKLEMME 2- REIHIG DIV TYPEN	1	FOR FIN	PILLAR TERMINAL (A)
95	938-307	SCHRAUBKLEMME 1- REIHIG DIV TYPEN	1	EXCEPT FOR NZL.SAF	PILLAR TERMINAL
96	994-273	KONDENSATOR DIV TYPEN	1		NOISE SUPPRESSOR
97	981-974	VERBINDERKABEL DH28Y/H41SA/H45MR H60MA/M	1		INTERNAL WIRE
97	306-681		1	"FOR GBR, VEN"	INTERNAL WIRE
98	990-082		1		SUPPORT (E)
99	992-891	SCHALTER DIV BOHR- MEISSELHAMMER	1		SWITCH (A) (1P SCREW TYPE) W/O LOCK
100	949-423	UNTERLEGSCHEIBE M4 (10ST)	1	EXCEPT FOR NZL	WASHER M4 (10 PCS.)
101	319-367	UNTERLEGSCHEIBE H70SA	2		WASHER
102	305-631	HANDGRIFF (B) H90SC/SE/H70SA	1		HANDLE (B)
103	301-653	SCHNEIDSCHRAUBE D4X20 MIT FLANSCH (SCHWA	2		TAPPING SCREW (W/FLANGE) D4X20 (BLACK)
104	319-361	GEHAUSE KOMPLETT H70SA	1	"INCLUD.61,105"	HOUSING ASS'Y
105	938-477	INBUSSTIFTSCHRAUBE M5X8	2		HEX. SOCKET SET SCREW M5X8
106	319-362		1		MESH
107	306-099	GEHAUSEABDECKUNG H65SB/SD/H70SA	1		TAIL COVER



108	323-736	Dampferplatte H65SB2	1	SINCE 7.2005	DAMPER PLATE
109	323-737	Buchse H65SB2	6	SINCE 7.2005	COLLAR
110	323-735	Frontdampder H65SB2	2	SINCE 7.2005	FRONT DAMPER
501	944-961	SPITZMEISSEL 410MM 30MM 6-KANT Neue Art	1		BULL POINT 410MM
502	943-277	INBUSSCHLUSSEL D3(M4)	1		HEX. BAR WRENCH 3MM
503	872-422	INBUSSCHLUSSEL D6(M8)	1		HEX. BAR WRENCH 6MM
601	944-962	FLACHMEISSEL 25X410 30MM 6-KANT Neue Art	1		COLD CHISEL 410MM (HEX. SHANK TYPE)
602	944-964	SPATMEISSEL 75X410 30MM 6-KANT Neue Art	1		CUTTER W75X410L (ROUND SHANK TYPE)
603	944-966	AUFNAHMES F STAMPFER-U STOCKERPL L= 250	1		RAMMER SHANK (HAMMER)
604	944-965	RAMMPLATTE o200MM H65SB/H70SA	1		RAMMER 200MM
605	319-298		1		SCOOP 380L (ROUND SHANK TYPE)
606	306-441	REPARATUR-SATZ H65SB/H70SA	1	"INCLUD.9,10,11,12,18,20,24,25,38,"	SERVICE KIT (H 65SB)
606	306-441	REPARATUR-SATZ H65SB/H70SA	1	"INCLUD.60,607,609 TILL 6.2005"	SERVICE KIT (H 65SB)
606A	324-728		1	"INCLUD.9,10A,11,12A,18,20,24,25,"	SERVICE KIT (H 70SA)
606A	324-728		1	"INCLUD.38,60,607,609 SINCE 7.2005"	SERVICE KIT (H 70SA)
607	981-840	HAMMERFETT (A) 30G	1		GREASE (A) FOR HAMMER.HAMMER DRILL (30G)
608	308-471	HAMMERFETT 70G TUBE	1		GREASE FOR HAMMER.HAMMER DRILL (70G)
609	930-035	FETT (SEP-3A) 100G	1		GREASE (SEP-3A) (100G)
610	980-927	HAMMERFETT 500G	1		GREASE FOR HAMMER.HAMMER DRILL (500G)