

Hitachi Power Tools

LIST NO: E461

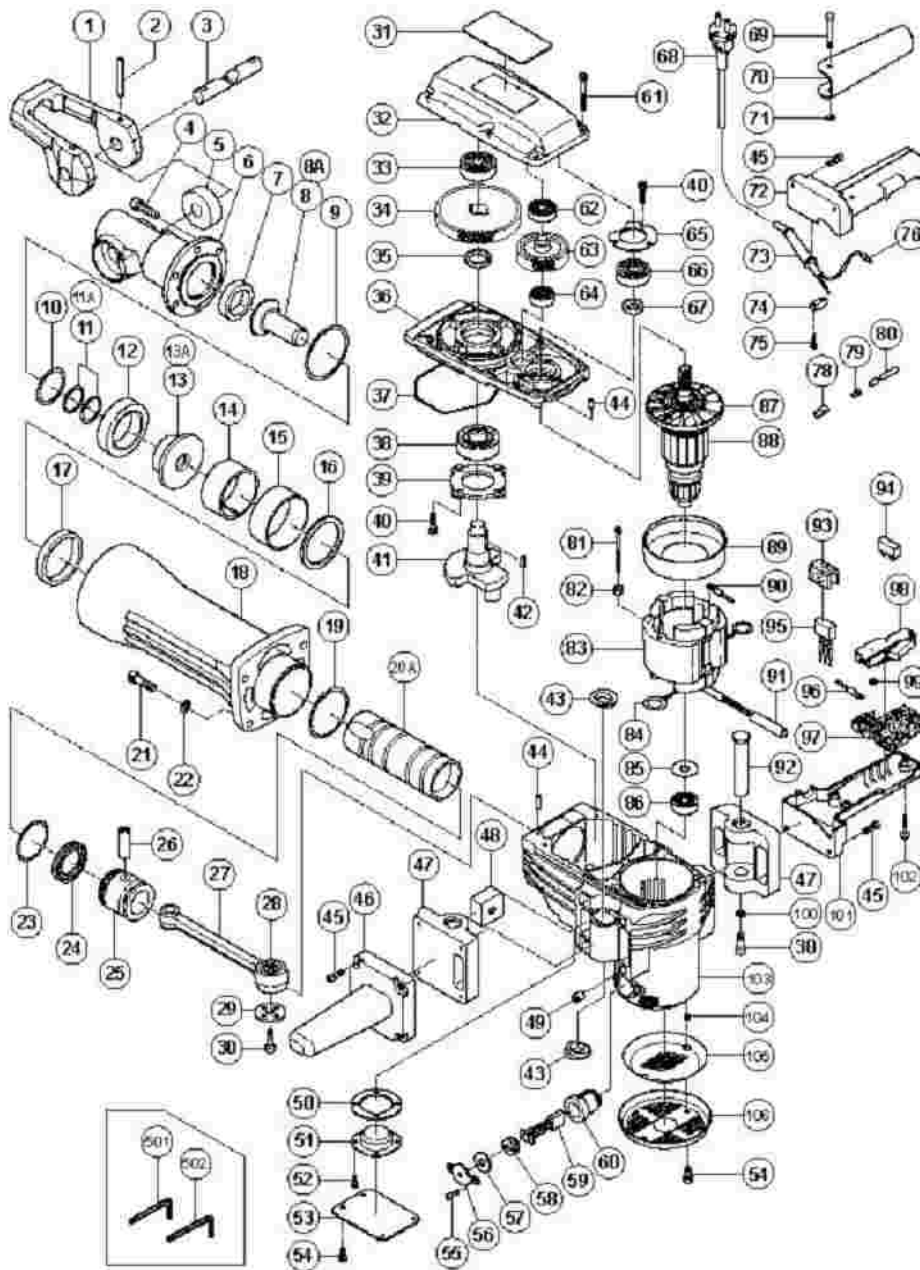
ELECTRIC TOOL PARTS LIST

■ HAMMER

2005 • 12 • 1

Model H 70SD

(E1-1)



H70SD

Pos. Nr.	Art. Nr.	Beschreibung	Stueck	Kommentar	
1	318-221	WERKZEUGHALTER H65SD	1		RE
2	994-416	ROLLSTIFT D6X55 H65SD/H90SE	2		RC
3	318-222	HEBELSTIFT H65SD	1		LE
4	306-437	INBUSSCHRAUBE M8X30 SELBSTSICH	6		NY SC M:
5	305-621	WERKZEUGHALTERDAMPFER H65SD/ H90SC/SE	2		RE DA
6	318-223	VORDERDECKEL H65SD	1		FR
7	996-369	DAMPFER (B) H65SD	1		DA
8	996-367	ZWEITHAMMER H65SD	1	(TILL 6.2005)	SE
8A	324-601	Zweithammer H65SD2	1	SINCE 7.2005	SE
9	998-428	O-RING (C) H65SB/SD/H70SA	1		O-
10	998-427	O-RING (B) H65SB/SD/H70SA	1		O-
11	998-419	O-RING (E) H65SB/SD/H70SA	1	(TILL 6.2005)	O-
11A	323-731	O-Ring H65SB2	2	SINCE 7.2005	O-
12	998-433	DAMPFER (A) H65SB/SD/H70SA	1		DA
13	998-418	SCHAFTBUCHSE H65SB/SD/H70SA	1	(TILL 6.2005)	SH
13A	323-730	Buchse H65SB2	1	SINCE 7.2005	SH
14	956-963	RING H65SB/SD/H70SA	1		M
15	956-962	RINGABDECKUNG H65SB/SD/H70SA	1		M
16	956-961	U-SCHEIBE H65SB/SD/H70SA	1		M
17	956-960	URETHANRING H65SB/SD/H70SA	1		UF
18	320-489	Zylindergehäuse H70SD	1		CY
	956-				

19	996	O-RING (1AS-60) DIV TYPEN	1		O-
20A	323-724	Anschlager H65SB2	1		ST
21	306-163	INBUSSCHRAUBE M8X35 SELBSTSICH	4		NY SC M:
22	949-433	UNTERLEGSCHLEIBE M8 (10ST)	4		BC (10
23	998-414	O-RING (A) H65SB/SD/H70SA	1		O-
24	998-415	OLDICHTUNG (A) H65SB/SD/H70SA	1		OI
25	998-413	KOLBEN H65SB/SD/H70SA	1		PI:
26	944-928	KOLBENSTIFT H65SB/SD/H70SA	1		PI:
27	998-434	PLEUEL KOMPLETT H65SB/SD/H70SA	1	INCLUD.28	CC AS
28	944-921	NADELLAGER(NTN8E-NK18/20RDO)	1		NE (N RI
29	956-955	U-SCHLEIBE KURBELWELLE H65SB/SD H70SA	1		CF
30	996-364	INBUSSCHRAUBE M8X16 SELBSTSICH	3		SE SC M:
31			1		NA
32	319-360	GETRIEBEGEHAUSE H70SA	1		GE
33	630-2VV	KUGELLAGER 6302VV	1		BA 63
34	944-916	ZAHNRAD H65SB/SD/H70SA	1		FI
35	944-915	ABSTANDSCHEIBE (B) H65SB/SD/H70SA	1		DI
36	998-412	INNENDECKEL H65SB/SD/H70SA	1		IN
37	957-143	DICHTUNGSRING (A) H65SB/SD/H70SA	1		SE
38	620-5DD	KUGELLAGER 6205 DD	1		BA 62
39	956-949	LAGERDECKEL H65SB/SD/H70SA	1		BE
40	990-079	INBUSSCHRAUBE M5X16 SELBSTSICH	7		SE SC M:
	998-	KURBELWELLE			

41	430	H65SB/SD/H70SA	1	CF
42	956-850	HALBMONDKEIL 4X16 H65SB/SD/H70SA	2	W 4X
43	318-655	DAMPFER (B) H90SE/H70SA	4	D/
44	944-918	ROLLSTIFT D5X15 8 H65SB/SD/H70SA	2	PI
45	993-496	INBUSSCHRAUBE M6X30 SELBSTSICH	8	SE SC M
46	305-633	SEITENGRIFF H90SC/SE/H70SA	1	SI
47	319-365	HANDGRIFFHALTER H70SA	2	H/
48	319-364	HANDGRIFFDAMPFER (B) H70SA	2	H/ (B
49	310-124	HANDGRIFFDAMPFER H41SA/H45MA u a H70SA/	4	H/
50	956-969	DICHTUNG H70SA	1	HC
51	998-416	HALTER H70SA	1	HC
52	987-203	#NAME?	4	SE (W M
53	998-417	ABDECKPLATTE H70SA	1	CC
54	991-690	INBUSSCHRAUBE M5X12 SELBSTSICH	6	SE SC M
55	983-162	INBUSSCHRAUBE M4X12 SELBSTS	4	SE SC M
56	956-972	KAPPENDECKEL H65SB/SD/H70SA	2	CA
57	944-960	KAPPENGUMMI H65SB/SD/H70SA	2	CA
58	940-540	KOHLLENKAPPE C13U/M12V/DIV TYPEN H70SA	2	BF
59	999-086	Abschaltkohlebursten (Paar)	2	CA (A (1
60	956-984	KOHLLENHALTER H60MA/MB/H65SB/SD H70SA	2	BF
61	986-940	INBUSSCHRAUBE M6X45 SELBSTSICH	6	SE SC M

62	620-1VV	KUGELLAGER 6201 VV	1		BA 62
63	956-948	GEGENZAHNRAD H65SB/SD/H70SA	1		CC
64	600-1VV	KUGELLAGER 6001 VV	1		BA 60
65	944-911	LAGERDECKEL (A) H65SB/SD/H70SA	1		BE (A)
66	620-3DD	KUGELLAGER 6203 DD	1		BA 62
67	944-907	DISTANZRING (A) H65SB/SD/H70SA	1		DI (A)
68	500-390Z		1	(CORD ARMOR D10.7)	CC
68	500-466Z		1	(CORD ARMOR D10.2) FOR GBR (110V)	CC
68	500-450Z		1	(CORD ARMOR D10.7) FOR GBR (230V)	CC
68	500-247Z		1	(CORD ARMOR D10.7) FOR SAF	CC
68	500-408Z		1	(CORD ARMOR D8.2) FOR AUS	CC
69	992-870	STIFT H90SC/SE/H70SA	1		PI
70	992-869	SCHALTERHEBEL H90SC/SE/H70SA	1		SV
71	968-643	SICHERUNGSRING D4 (E- TYPE)	1		RE (E- SH
72	305-636	HANDGRIFF (A) H90SC/SE/H70SA	1		HA
73	958-049	KABELKNICKSCHUTZ D8 2 DIV TYPEN	1		CC
73	940-778	KABELKNICKSCHUTZ D10 7 DIV TYPEN	1		CC D1
74	960-266	KABELKLEMME DIV TYPEN	1		CC
75	982-095	SCHNEIDSCHRAUBE D4X20 M U-SCHEIBE	2		TA (W D4
76	980-063	KABELSCHUH C7U/CJ65V2/H70SA/G13V G13YD/G	1		TE
76	930-804	KABELSCHUH M4 0 (10ST)	1	FOR GBR (110V)	TE PC
78	959-141	VERBINDER 50092 (10ST) DIV TYPEN	2		CC (10

79	959-140	VERBINDER 50091 (10ST) DIV TYPEN	1		CC (10
80	996-438	ISO-SCHLAUCH(A)(ID 7X0 5X50) H65SB/SD/H9	2		VI (L
81	960-251	SCHNEIDSCHRAUBE D5X65 (DIV TYPEN)	2		HE SC
82	956-764	SPEZIALSCHEIBE H65SB/SD/H70SA u a	2		SP
83	340-488C		1	INCLUD.84	ST 11
83	340-488E	STATOR KOMPLETT 230V H70SA	1	INCLUD.84	ST 23
83	340-488F		1	INCLUD.84	ST 24
84	945-932	KOHLLENHALTERKLEMME H60MA/MB u a H70SA	2		BF
85	944-954	LAGERSCHEIBE F30A/H65SB/SD u a H70SA	1		BE
86	620-1DD	KUGELLAGER 6201 DD	1		BA 62
87	996-370	LUFTERFLUGEL H60MA/MB/H65SB u a H70SA	1		FA
88	360-286C		1	INCLUD.87	AF 11
88	360-286E	ANKER 220V-230V H65SB/SD/H70SA	1	INCLUD.87	AF 22
88	360-286F		1	INCLUD.87	AF 24
89	306-098	LUFTFUHRUNG H65SB/SD/H70SA	1		FA
90	986-277	VERBINDERKABEL DH20V/DH25V u a H70SA	1		IN
91	319-363	KUNSTSTOFFSCHLAUCH H70SA	1		VI
92	319-366	HANDGRIFFSTIFT H70SA	2		HA
93	930-153	POLSTER (B) SELBSTKLEB DIV TYPEN	1		SU
94	938-307	SCHRAUBKLEMME 1-REIHIG DIV TYPEN	1	EXCEPT FOR SAF	PI
95	317-491	KONDENSATOR G13YD	1		NC SU
96	981-974	VERBINDERKABEL DH28Y/H41SA/H45MR H60MA/M	1		IN
96	306-681		1	FOR GBR	IN

97	990-082		1		SU
98	992-891	SCHALTER DIV BOHR-MEISSELHAMMER	1		SV SC LC
99	949-423	UNTERLEGSCHLEIBE M4 (10ST)	1		W. PC
100	319-367	UNTERLEGSCHLEIBE H70SA	2		W.
101	305-631	HANDGRIFF (B) H90SC/SE/H70SA	1		HA
102	301-653	SCHNEIDSCHRAUBE D4X20 MIT FLANSCH (SCHWA	2		TA (W (B
103	319-361	GEHAUSE KOMPLETT H70SA	1	"INCLUD.60,104"	HC
104	938-477	INBUSSTIFTSCHRAUBE M5X8	2		HE SC
105	319-362		1		MI
106	306-099	GEHAUSEABDECKUNG H65SB/SD/H70SA	1		TA
501	943-277	INBUSSCHLUSSEL D3(M4)	1		HE 3M
502	872-422	INBUSSCHLUSSEL D6(M8)	1		HE 6M
601	996-373	FLACHMEISSEL 25X410 28MM 6-KANT	1		CC 41 SH
602	985-231	FLACHMEISSEL 25X520 28MM 6-KANT Neue Art	1		CC 52 SH
603	996-374	SPATMEISSEL 75X410 28MM 6- KANT NEUE ART	1		CU W' SH
604	985-232	SPATMEISSEL 75X520 28MM 6- KANT Neue Art	1		CU W' SH
605	985-233	SCHAUFEL L=546MM 28MM 6- KANT	1		SC SH
606	996-372		1		BU 41 SH
607	306-441	REPARATUR-SATZ H65SB/H70SA	1	"INCLUD.4,9,10,11,17,19,23,24,37,"	SE 65
607	306-441	REPARATUR-SATZ H65SB/H70SA	1	"INCLUD.59,609,611 (TILL 6.2005)"	SE 65

607A	324-729		1	"INCLUD.4,9,10,11A,17,19,23,24,37,"	SE 65
607A	324-729		1	"INCLUD.59,609,611 SINCE 7.2005"	SE 65
608	980-927	HAMMERFETT 500G	1		GF H/ DF
609	981-840	HAMMERFETT (A) 30G	1		GF H/ DF
610	308-471	HAMMERFETT 70G TUBE	1		GF H/ DF
611	930-035	FETT (SEP-3A) 100G	1		GF (10