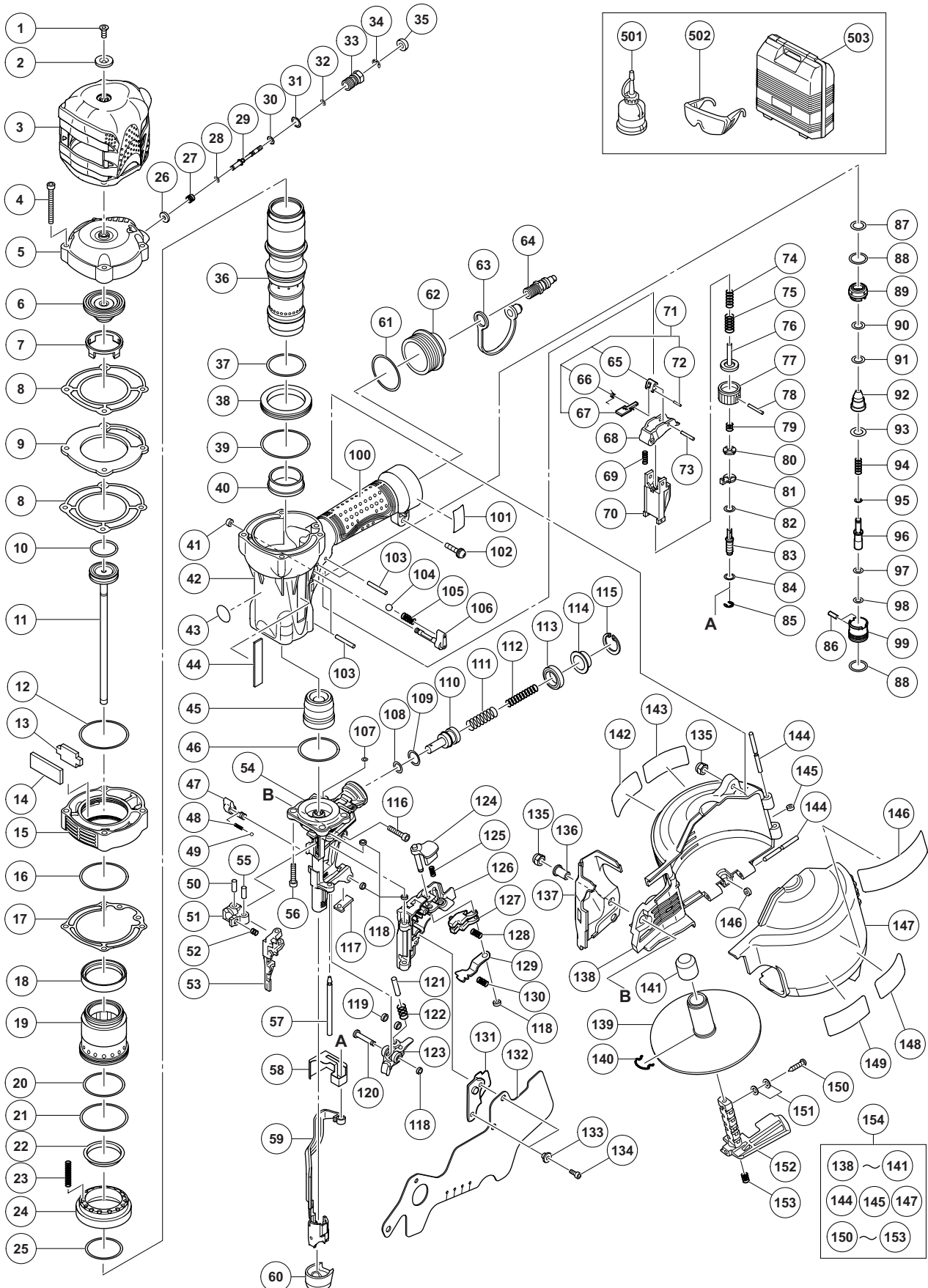


## PNEUMATIC TOOL PARTS LIST

### ■ HIGH PRESSURE COIL NAILER Model NV 75HMC

2012-5-21  
(E1)



**PARTS**

NV 75HMC

ITEM NO.	CODE NO.	DESCRIPTION	NO. USED	REMARKS
1	887-128	SEAL LOCK HEX. SOCKET FLAT HD. BOLT M5 X 10	1	
2	885-264	WASHER	1	
3	887-721	PROTECTOR	1	
4	883-403	NYLOCK BOLT M5 X 55	4	
5	886-901	UPPER COVER	1	
6	886-898	HEAD BUMPER	1	
7	886-904	HEAD GUIDE	1	
8	886-902	PACKING (B)	2	
9	886-903	PLATE	1	
10	885-830	PISTON O-RING	1	
11	887-703	PISTON (H)	1	
12	886-900	O-RING (I.D 48.5)	1	
13	887-718	MUFFLER (A)	1	
14	887-717	MUFFLER	1	
15	887-714	EXHAUST COVER	1	
16	887-129	O-RING	1	
17	887-715	PACKING (C)	1	
18	885-839	SLEEVE VALVE RUBBER	1	
19	886-896	SLEEVE VALVE	1	
20	887-126	O-RING	1	
21	885-841	O-RING	1	
22	885-844	EXHAUST RUBBER	1	
23	885-846	SLEEVE VALVE SPRING	16	
24	887-723	VALVE PLATE	1	
25	872-767	O-RING (S-32)	1	
26	881-711	VALVE PACKING	1	
27	881-900	SPRING	1	
28	878-607	PLUNGER O-RING	1	
29	886-044	PLUNGER	1	
30	873-093	O-RING (1AP-3)	1	
31	987-105	O-RING (S-10)	1	
32	881-715	O-RING (S3)	1	
33	885-027	VALVE BUSHING	1	
34	968-643	RETAINING RING (E-TYPE) FOR D4 SHAFT	1	
35	884-334	KNOB	1	
36	887-716	CYLINDER	1	
37	984-483	O-RING (S-36)	1	
38	886-895	CYLINDER PLATE	1	
39	985-765	O-RING (B)	1	
40	881-244	CYLINDER RING	1	
41	886-669	FEEDER SHAFT RING	1	
42	886-893	BODY ASS'Y	1	INCLUD. 100
43	883-513	WARNING LABEL (A)	1	
44	886-342	HITACHI PLATE	1	
45	886-882	PISTON BUMPER	1	
46	980-879	O-RING (S-34)	1	
47	887-124	CHANGE KNOB	1	
48	882-923	LOCK SPRING	1	
49	959-148	STEEL BALL D3.175 (10 PCS.)	1	
50	949-498	ROLL PIN D4 X 18 (10 PCS.)	1	

**PARTS**

NV 75HMC

ITEM NO.	CODE NO.	DESCRIPTION	NO. USED	REMARKS
51	883-144	FEEDER ARM (B)	1	
52	883-143	FEEDER SPRING	1	
53	887-706	FEEDER (A)	1	
54	887-704	NOSE	1	
55	883-093	PLUNGER (B)	1	
56	993-040	NYLOCK HIGH TENSION BOLT M7 X 25	4	
57	883-091	NAIL GUIDE SHAFT	1	
58	883-113	PUSHING LEVER COVER (B)	1	
59	887-711	PUSHING LEVER (A)	1	
60	887-712	NOSE CAP (A)	1	
61	880-183	O-RING (I.D 37.2)	1	
62	886-426	CAP (GOLD)	1	
63	877-914	DUST CAP	1	
64	883-135	AIR PLUG L-PT 1/4	1	
65	886-626	TRIGGER PIECE (C)	1	
66	886-627	TRIGGER SPRING	1	
67	886-625	TRIGGER ARM (C)	1	
68	886-623	TRIGGER	1	
69	883-759	TRIGGER SPRING	1	
70	886-047	PUSHING LEVER GUIDE	1	
71	886-624	TRIGGER ARM ASS'Y	1	INCLUD. 65-67, 72
72	886-228	ROLL PIN D1.6 X 10	1	
73	881-951	ROLL PIN D2.5 X 16	1	
74	883-302	PUSHING LEVER SPRING (B)	1	
75	883-305	PUSHING LEVER SPRING (A)	1	
76	882-891	PUSHING LEVER (C)	1	
77	882-889	ADJUSTER	1	
78	880-093	ROLL PIN D2 X 16	1	
79	882-890	ADJUSTER SPRING	1	
80	884-973	ADJUSTER PLATE (C)	1	
81	882-886	ADJUSTER PLATE (A)	1	
82	981-317	O-RING (S-4)	1	
83	886-043	PUSHING LEVER (B)	1	
84	872-822	O-RING (S-5)	1	
85	872-971	RETAINING RING (E-TYPE) FOR D3 SHAFT	1	
86	949-778	PIN D2 X 8 (10 PCS.)	2	
87	876-319	O-RING (S-14)	1	
88	876-031	O-RING (S-16)	2	
89	886-910	VALVE BUSHING (B)	1	
90	883-105	O-RING (P7-U)	1	
91	883-104	O-RING (P9-U)	1	
92	883-101	VALVE PISTON	1	
93	878-764	O-RING (1AP-11)	1	
94	883-103	PLUNGER SPRING	1	
95	883-405	O-RING (I.D 1.8)	1	
96	886-621	PLUNGER	1	
97	873-407	O-RING (1AP-5)	1	
98	997-218	O-RING (S-6)	1	
99	883-099	VALVE BUSHING (A)	1	
100		GRIP RUBBER (A)	1	SUPPLIED WITH ITEM NO. 601, 602

**PARTS**

NV 75HMC

ITEM NO.	CODE NO.	DESCRIPTION	NO. USED	REMARKS
101		CAUTION PLATE (C)	1	
102	880-734	MACHINE SCREW (W/WASHERS) M5 X 25 (BLACK)	1	
103	949-865	ROLL PIN D3 X 28 (10 PCS.)	4	
104	959-148	STEEL BALL D3.175 (10 PCS.)	1	
105	882-923	LOCK SPRING	1	
106	886-727	LOCK KNOB	1	
107	873-093	O-RING (1AP-3)	1	
108	872-645	O-RING (P-9)	1	
109	877-763	FEED PISTON O-RING (I.D. 14)	1	
110	883-094	FEED PISTON	1	
111	883-095	FEED SPRING (A)	1	
112	883-096	FEED SPRING (B)	1	
113	885-681	BUMPER	1	
114	883-098	FEED PISTON COVER	1	
115	983-748	RETAINING RING FOR D24 HOLE	1	
116	949-757	HEX. SOCKET HD. BOLT M5 X 20 (10 PCS.)	1	
117	887-131	NOSE BUMPER	1	
118	880-319	SHAFT RING	5	
119	887-122	NOSE SLEEVE	2	
120	887-125	NOSE SHAFT	1	
121	887-710	URETHANE SHAFT	1	
122	887-709	SPRING	1	
123	887-918	NOSE PIECE (A)	1	
124	887-130	GUIDE LOCK	1	
125	880-446	SPRING	1	
126	887-705	NAIL GUIDE	1	
127	883-085	NAIL STOPPER (A)	1	
128	883-088	STOPPER SPRING (A)	1	
129	885-677	NAIL STOPPER (B)	1	
130	883-087	STOPPER SPRING (B)	1	
131	883-089	NAIL GUIDE COVER	1	
132	887-708	COVER	1	
133	882-881	SLEEVE (B)	2	
134	880-630	NYLOCK HEX. SOCKET HD. BOLT M4 X 12	2	
135	877-371	NYLON NUT M5	2	
136	882-907	SLEEVE	1	
137	887-713	PUSHING LEVER COVER (A)	1	
138	887-720	MAGAZINE	1	
139	880-503	NAIL HOLDER	1	
140	880-398	RATCHET SPRING	1	
141	881-003	HOLDER CAP (A)	1	
142		LABEL (D)	1	
143	887-175	WARNING LABEL	1	
144	883-111	PIN	2	
145	877-826	FEEDER SHAFT RING	2	
146		CAUTION PLATE (B)	1	
147	883-396	MAGAZINE COVER	1	
148	887-174	WARNING LABEL	1	
149		NAME PLATE	1	
150	995-474	TAPPING SCREW D3 X 14	1	



**STANDARD ACCESSORIES**

NV 75HMC

ITEM NO.	CODE NO.	DESCRIPTION	NO. USED	REMARKS
501	883-136	PNEUMATIC TOOL LUBRICANT (30 CC)	1	
502	875-769	SAFETY GLASSES	1	
503	886-432	CASE	1	

**OPTIONAL ACCESSORIES**

ITEM NO.	CODE NO.	DESCRIPTION	NO. USED	REMARKS
601	881-768	GRIP TAPE (A)	1	
602	880-407	TAPE	2	
603	876-212	PNEUMATIC TOOL LUBRICANT (1 L)	1	
604	887-133	GRIP GUIDE	1	
605	887-978	HANGER PARTS SET	1	
606	887-951	SINGLE SEQUENTIAL ACTUATION MECHANISM KIT	1	