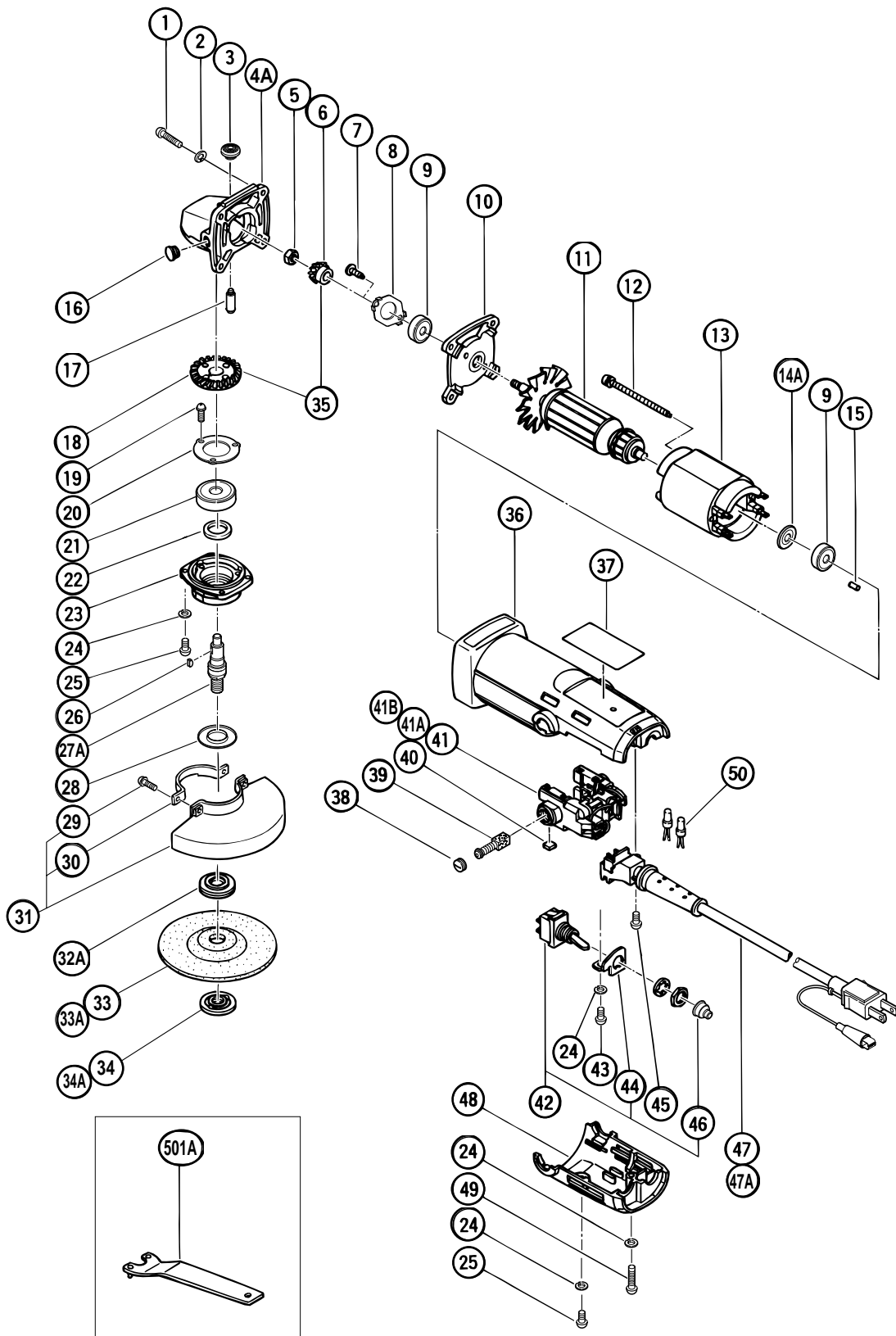


## ELECTRIC TOOL PARTS LIST

■ DISC GRINDER  
Model PDA-100D

2000.9.29  
(E4)



## PARTS

PDA-100D

ITEM NO.	CODE NO.	DESCRIPTION	NO. USED	REMARKS	
1	949-240	MACHINE SCREW M5X18 (10 PCS.)	4		
2	949-454	SPRING WASHER M5 (10 PCS.)	4		
3	301-944	PUSHING BUTTON	1		
4A	303-078	GEAR COVER ASS'Y	1	INCLUD.3,17	
5	301-941	SPECIAL NUT M7	1		
6	301-939	PINION	1		
7	301-936	SLOTTED HD. SCREW (SEAL LOCK) M4X10	2		
8	301-937	BEARING COVER	1		
9	608-VVM	BALL BEARING 608VVC2PS2L	2		
10	301-935	INNER COVER	1		
*	11	360-133C	ARMATURE 110V-115V	1	
*	11	360-133D	ARMATURE 120V-127V	1	
*	11	360-133E	ARMATURE 220V-230V	1	
*	11	360-133F	ARMATURE 240V	1	
12	301-934	MACHINE SCREW (W/SP. WASHER) M4X71	2		
*	13	340-165C	STATOR 110V-115V	1	
*	13	340-195	STATOR 120V-127V	1	
*	13	340-165E	STATOR 220V-230V	1	
*	13	340-165F	STATOR 240V	1	
14A	311-435	DUST SEAL (A)	1		
15	931-701	BEARING LOCK	1		
16		CAP	1		
17	301-943	LOCK PIN	1		
18	301-940	GEAR	1		
19	997-263	SEAL LOCK SCREW (W/SP. WASHER) M4X10	3		
20	938-058	BEARING COVER (B)	1		
21	600-1VV	BALL BEARING 6001VVCMP2L	1		
22	301-946	FELT PACKING	1		
23	301-947	PACKING GLAND	1		
24	949-453	SPRING WASHER M4 (10 PCS.)	7		
25	949-217	MACHINE SCREW M4X12 (10 PCS.)	5		
26	302-047	WOODRUFF KEY	1		
27A	302-046	SPINDLE M10XP1.5	1		
28	301-945	FRINGER	1		
29	987-512	MACHINE SCREW (W/SP. WASHER) M5X16	2		
30	301-949	SET PLATE	1		
31	301-948	WHEEL GUARD ASS'Y	1	INCLUD.29,30	
*	32A	317-818	WHEEL WASHER	1	
*	32A	317-440	WHEEL WASHER	1	FOR KOR
*	33	939-640	D. C. WHEELS 100MMX4T A36Q (20 PCS.)	1	FOR KOR
*	33A	316-820	D. C. WHEELS 100MMX4T A36Q (25 PCS.)	1	
*	34	938-062	WHEEL NUT (B)	1	FOR KOR
*	34A	314-437	WHEEL NUT (C)	1	
35	301-938	GEAR AND PINION ASS'Y	1	INCLUD.6,18	
36	302-045	HOUSING	1		
37		NAME PLATE	1		
38	936-551	BRUSH CAP	2		
39	999-021	CARBON BRUSH (1 PAIR)	2		
40	984-630	RUBBER PACKING	2		
*	41	301-952	WIRING BLOCK ASS'Y	1	INCLUD.40 (TILL 9.1996 FOR INA,SUR,SIN,
				KUW)	

\* : ALTERNATIVE PARTS

9 - 00



