

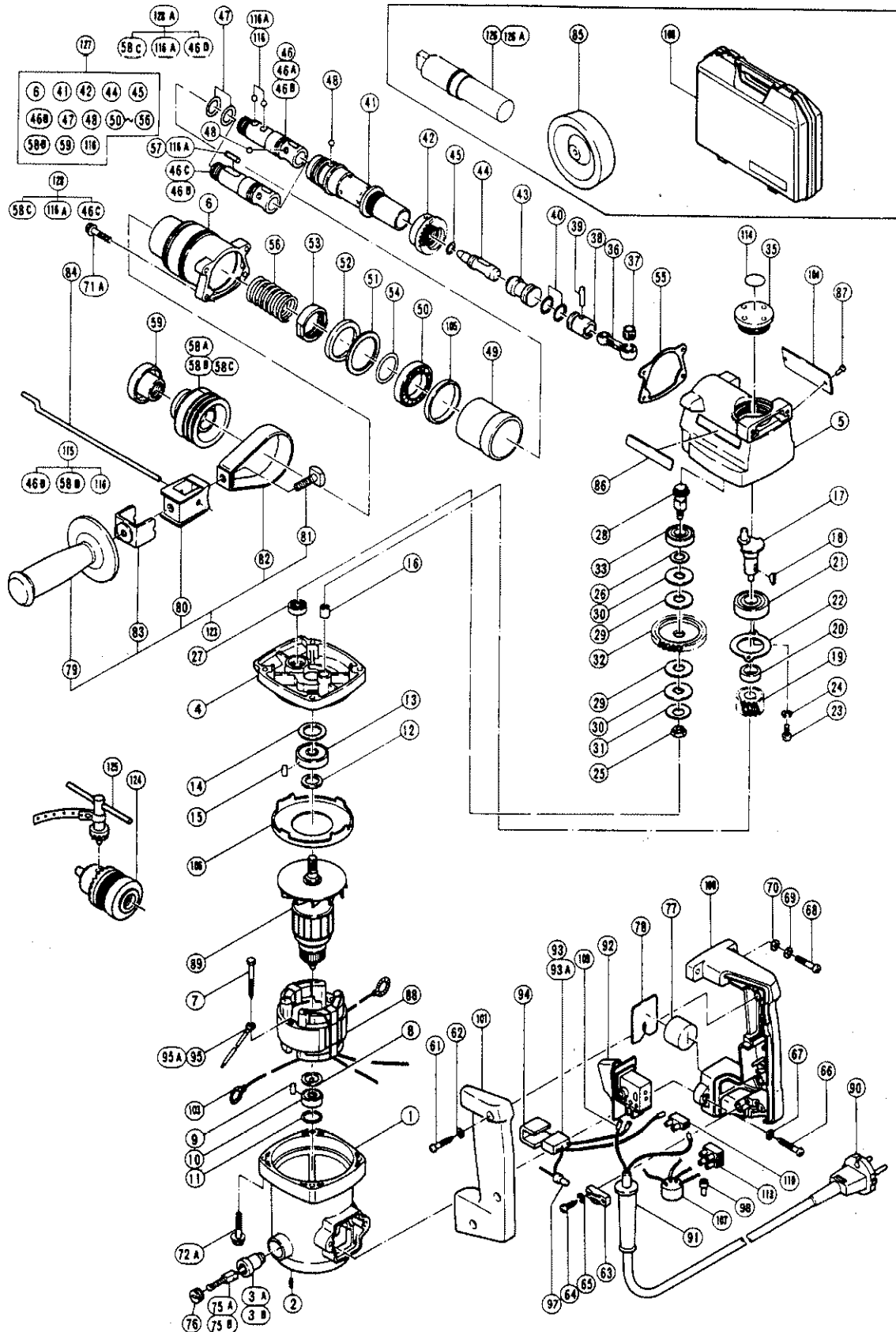
## ELECTRIC TOOL PARTS LIST

■ HAMMER DRILL

1988·8·20

Model VRV-16

VRV-16(E4)



## PARTS

VRV-16(E4)

Item No.	Code No.	Part Name	Q'ty	Remarks
1	981140	Housing Ass'y	1	includ. 2, 3B
2	938477	Hexagon Socket Hd. Set Screw M5 x 8	2	(10 pcs.)
3A	980928	Brush Holder	2	till 4, 1984
3B	990721	Brush Holder	2	since 5, 1984
4	980919Z	Gear Cover	1	
5	980920Z	Crank Case Ass'y	1	
6	980921Z	Cylinder Case	1	
7	980864	Hexagon Tapping Screw D5 x 40	2	
8	980865	Washer (A)	1	
9	946362	Bearing Lock	1	
10	626VVM	Ball Bearing 626VVCMP2S	1	
11	873085	O-Ring (P-14)	1	
12	971736	Washer (B)	1	
13	6000VV	Ball Bearing 6000VVCMP2S	1	
14	980866	Washer (C)	1	
15	931701	Bearing Lock	1	
16	980867	Needle Bearing	1	
17	980868	Crank Shaft	1	
18	940220	Woodruff Key	1	
19	980869	First Gear	1	
20	980870	Distance Collar	1	
21	6202DD	Ball Bearing 6202DDUCMP2S	1	
22	980871	Bearing Cover	1	
23	949217	Machine Screw M4 x 12	2	(10 pcs.)
24	949453	Spring Lock Washer	2	for M4 (10 pcs.)
25	980872	Nut (A)	1	
26	980873	Washer	1	
27	626VVM	Ball Bearing 626VVMC2ERPS2S	1	
28	980874	Third Pinion	1	
29	980875	Clutch Plate	2	
30	980876	Slip Plate	2	
31	980877	Beleville Spring	1	
32	980878	Second Gear	1	
33	6001DD	Ball Bearing 6001DDUCMP2S	1	
34	980948	O-Ring	1	
35	980880	Oil Cap	1	
36	980881	Connecting Rod Ass'y	1	onclud. 37
37	673422	Needle Bearing (HK0709)	1	
38	980882	Piston	1	
39	980883	Piston Pin	1	
40	980884	O-Ring	2	
41	980885	Cylinder	1	
42	980886	Third Gear	1	
43	980887	Striker	1	
44	980888	Second Hammer	1	
45	872645	O-Ring (1P-9)	1	
46	—	Retainer Sleeve (B)	1	See alternative parts
47	980890	O-Ring (D)	2	
48	959150	Ball D6.35	6	(10 pcs.)
49	980891	Pipe	1	
50	6906BB	Ball Bearing 6906	1	
51	980893	Washer (D)	1	
52	980929	Oil Seal	1	

## PARTS

VRV-16(E4)

Item No.	Code No.	Part Name	Q'ty	Remarks
53	980894	Cylinder Cap	1	
54	980895	O-Ring (C)	1	
55	980896	Seal Packing (B)	1	
56	980937	Spring	1	
57	971812	Needle Roller	2	till 11, 1980
58A	—	Slide Grip	1	See alternative parts
59	971769	Front Cap	1	
61	958705	Tapping Screw	D4 x 25	3
62	949423	Washer		3 for M4 (10 pcs.)
63	960266	Cord Clip		1
64	954004	Tapping Screw	D4 x 16	2
65	949423	Washer		2 for M4 (10 pcs.)
66	937807	Tapping Screw	D5 x 25	2
67	949424	Washer		2 for M5 (10 pcs.)
68	949243	Machine Screw	M5 x 25	2 (10 pcs.)
69	949454	Spring Lock Washer		2 for M5 (10 pcs.)
70	949431	Bolt Washer		2 for M5 (10 pcs.)
71A	992253	Hexagon Socket Hd. Bolt	M5 x 25	4 w/Flange
72A	980951	Hexagon Socket Hd. Bolt	M5 x 45	4 w/Flange
75A	—	Carbon Brush		2 See alternative parts
76	937847	Brush Cap		2
77	971816	Handle Packing		1 till 7, 1986
78	980900	Plate		1
79	980901	Side Handle		1
80	980902	Side Handle Holder		1
81	930903	Square Bolt		1 for M8
82	980904	Band		1
83	980905	Rod Holder		1
84	980906	Stopper Rod		1
85	971787	Dust Cup		1
86	957561	HITACHI Label		1
87	949510	Rivet	D2.5 x 4.8	2 (10 pcs.)
88	—	Stator Ass'y		1 See alternative parts
89	—	Armature		1 See alternative parts
90	—	Cord		1 See alternative parts
91	—	Cord Armor		1 See alternative parts
92	—	Switch		1 See alternative parts
93	—	Noise Suppressor		1 See alternative parts
94	—	Support (B)		1 See alternative parts
95	—	Internal Wire		1 See alternative parts
97	—	Connector		1 See alternative parts
98	—	Connector		1 See alternative parts
100	980923Z	Handle (B)		1
101	980924Z	Handle Cover (B)		1
103	930630	Brush Terminal		2
104	—	Name Plate		1 See alternative parts
105	980930	Urethane Ring		1
106	980931	Fan Guide		1
107	—	Choke Coil (C) Ass'y		1 See alternative parts
108	930947	Case Ass'y		1
109	981373	Tube (D)		2
109	—	Tube (D)		1 See alternative parts
110	—	Pillar Terminal		1 See alternative parts

## PARTS

VRV-16(E4)

Item No.	Code No.	Part Name	Q'ty	Remarks
113	—	Pillar Terminal (A)	1	See alternative parts
114	930934Z	Caution Plate	1	
115	980938Z	Retainer Sleeve Ass'y	1	includ. 46B, 58B, 116 since 12. 1980
116	—	Steel Ball	4	See alternative parts
123	930939	Side Handle Ass'y	1	includ. 79 ~ 83
124	—	Cuck Ass'y	1	See alternative parts
125	—	Chuck Handle Ass'y	1	See alternative parts
126	—	Chuck Adaptor	1	See alternative parts
127	—	Cylinder Case Ass.Y	1	See alternative parts
128	—	Retainer Sleeve Ass'y	1	See alternative parts

## ALTERNATIVE PARTS

Item No.	Code No.	Part Name	Q'ty	Remarks	
46	980942Z	Retainer Sleeve (B)	1	for France, Switzerland	
46A	980889	Retainer Sleeve	1	till 11, 1980	
46B	980935	Retainer Sleeve	1	since 12, 1980	
46C	980944Z	Retainer Sleeve (C)	1	since 1. 1982 for Netherlands till 10, 1986	
46D	980952	Retainer Sleeve (E)	1	for Netherlands since 11. 1986, for Finland, Switzerland since 1. 1987	
58A	980898	Slide Grip	1	till 11. 1980	
58B	980936	Slide Grip	1	since 12. 1980	
58C	990763	Slide Grip	1	for Netherlands since 4. 1986, for Finland, Switzerland since 1. 1987	
75A	999035	Carbon Brush	2	till 4. 1984 (2 pcs.)	
	980666Z	Carbon Brush	2	auto stop type till 4, 1984 (2 pcs.)	
75B	999084	Carbon Brush	2	auto stop type since 5. 1984 (2 pcs.)	
	999021	Carbon Brush	2	since 5. 1984 (2 pcs.)	
88	980908G	Stator Ass'y	220V	1	includ. 103
	980908F	Stator Ass'y	240V	1	for U.K. includ. 103
	980908K	Stator Ass'y		1	for U.K. includ. 103
89	980910G	Armature	220V	1	
	980910H	Armature	240V	1	for U.K.
90	500232Z	Cord		1	for U.K. (Cord Armor D8.8)
	500235Z	Cord		1	for Europe (Cord Armor D8.8)
	500390Z	Cord		1	for Netherlands (Cord Armor D10.1)
	500391Z	Cord		1	for Switzerland (Cord Armor D10.1)
91	938051	Cord Armor (φ10.1)		1	
	953327	Cord Armor (φ 8.8)		1	
92	980922Z	Single Pole Switch (Pillar Type)		1	w/o lock
93	994273	Noise Suppressor		1	for Finland, Austria
93A	980955	Noise Suppressor		1	
94	930153	Support (B)		1	



## ALTERNATIVE PARTS

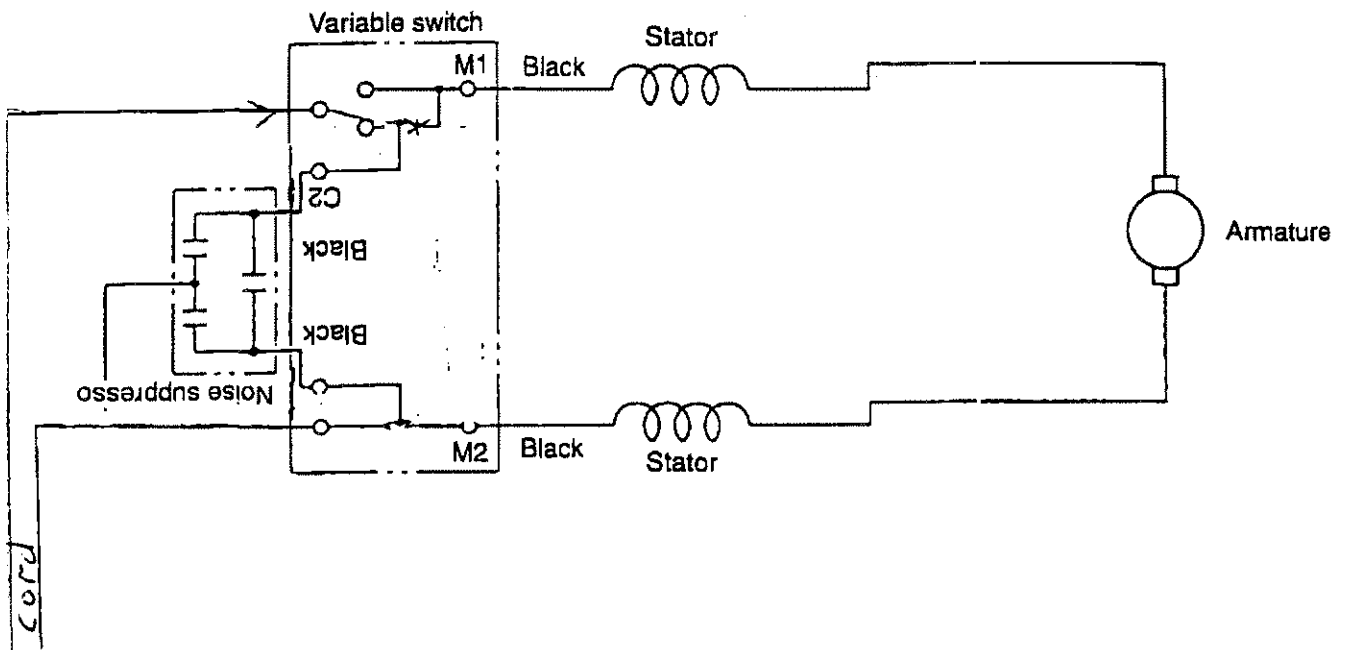
VRV-16(E4)

Item No.	Code No.	Part Name	Q'ty	Remarks
95A	986277	Internal Wire	1	
95	971825Z	Internal Wire	1	for Netherlands
97	959140	Connector (50091)	1	(10 pcs.)
98	959141	Connector (50092)	1	(10 pcs.)
104	—	Name Plate	1	
107	930132Z	Choke Coil (C)	1	
109	981373	Tube (D)	2	
110	938307Z	Pillar Terminal	1	
113	958308Z	Pillar Terminal (A)	1	
116	959151	Steel Ball	4	D7.14 since 12. 1980
116A	971812	Needle Roller	2	for Netherlands since 4. 1981, for Finland, Switzerland since 1. 1987
124	950271	Chuck Ass'y	1	10VLA for Switzerland, includ. Chuck Handle 6.5G
125	930119	Chuck Handle	1	6.5G for Switzerland
126	980943Z	Chuck Adaptor	1	
126A	980953	Chuck Adapter Ass'y	1	for Finland, Switzerland, since 1. 1987
127	980949	Cylinder Case Ass'y	1	for Switzerland, includ. 6, 41, 42, 44, 45, 46B, 47, 48 50~56, 58B, 59, 116
128	980950	Retainer Sleeve Ass'y	1	includ 46C, 58C, 116A for Needle Roller Type
128A	980954	Retainer Sleeve (E) Ass'y	1	includ. 46D, 58c, 116A for Nether land, for Finland, Switzerland, since 1. 1987

## OPTIONAL ACCESSORIES

Item No.	Code No.	Part Name	Q'ty	Remarks
601	930119	Chuck Wrench 6.5G	1	
602	950271	Drill Chuck 10VLA	1	includ. 601
603	971794	Anchor Setting Adapter A W1/4 (Manual)	1	
604	971795	Anchor Setting Adapter A W5/16 (Manual)	1	
605	971796	Anchor Setting Adapter A W3/8 (Manual)	1	
606	971799	Anchor Setting Adapter B W1/4 (Manual)	1	
607	971800	Anchor Setting Adapter B W5/16 (Manual)	1	
608	971801	Anchor Setting Adapter B W3/8 (Manual)	1	
609	971804	Anchor Setting Adapter A W1/4 (Electric)	1	
610	971805	Anchor Setting Adapter A W5/16 (Electric)	1	
611	971806	Anchor Setting Adapter A W3/8 (Electric)	1	
612	971807	Anchor Setting Adapter B W1/4 (Electric)	1	
613	971808	Anchor Setting Adapter B W5/16 (Electric)	1	
614	971809	Anchor Setting Adapter B W3/8 (Electric)	1	
615	971810Z	A-Taper Shank Adapter	1	

### Neues Anschluss – Diagramm für den Schalter ( 980-922 Z)



MFG.  
B. G.