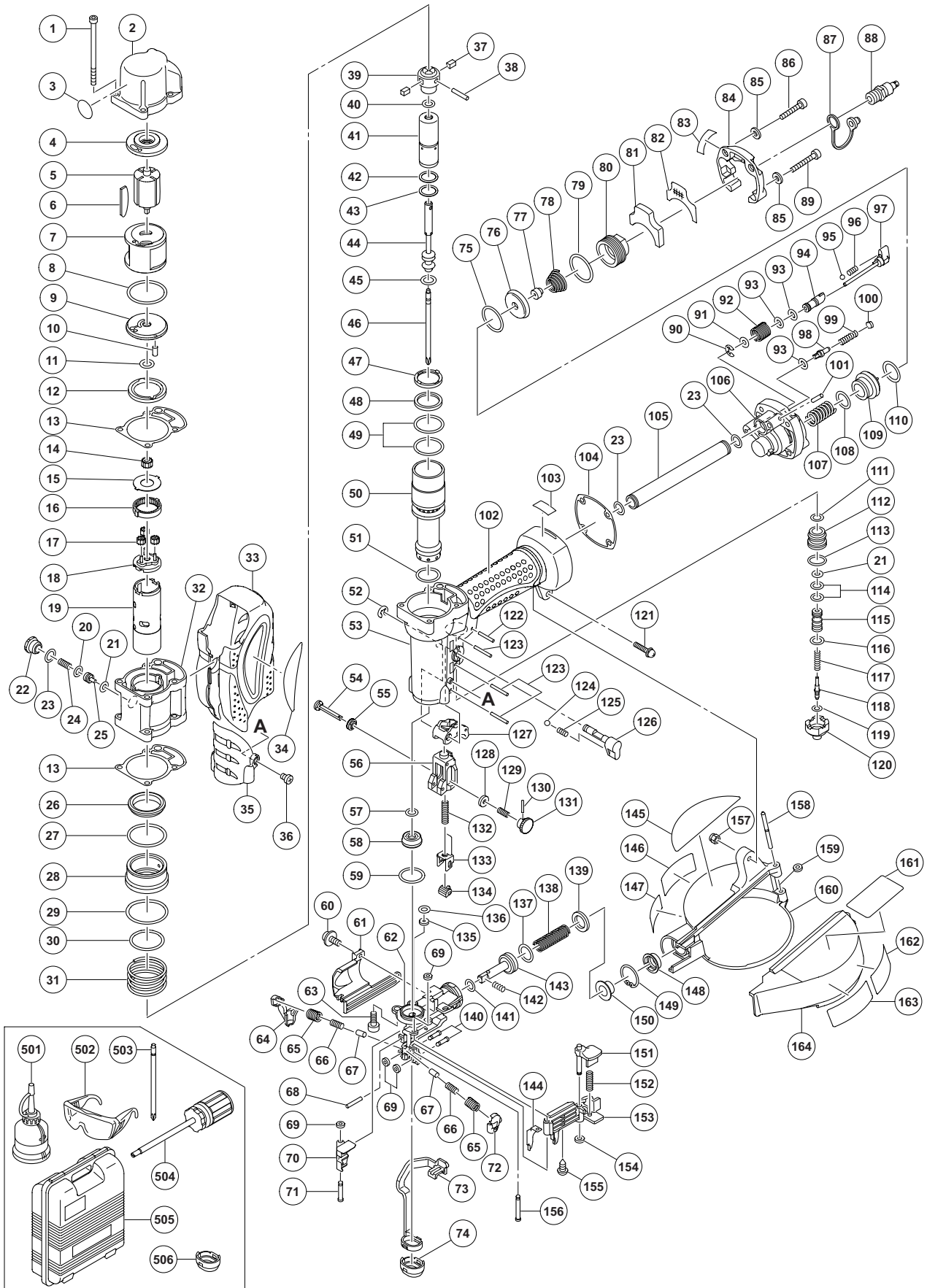


PNEUMATIC TOOL PARTS LIST

■ HIGH PRESSURE AUTOMATIC SCREW DRIVER 2012-5-21 Model WF 4H2 (E1)



PARTS

WF 4H2

ITEM NO.	CODE NO.	DESCRIPTION	NO. USED	REMARKS
1	305-481	HEX. SOCKET HD. BOLT M5 X 80	4	
2	886-560	CASING (A) GOLD	1	
3	883-513	WARNING LABEL (A)	1	
4	886-097	SIDE COVER (A)	1	
5	886-095	ROTOR	1	
6	886-096	VANE	4	
7	886-094	MOTOR CYLINDER	1	
8	996-363	O-RING (S-40)	1	
9	886-098	SIDE COVER (B)	1	
10	886-092	PIN (B)	1	
11	315-382	O-RING (P-8)	1	
12	316-390	PACKING (C)	1	
13	884-504	PACKING (A)	2	
14	886-091	PINION	1	
15	884-515	WASHER (A)	1	
16	886-089	RING GEAR	1	
17	886-090	IDLE GEAR	3	
18	886-088	SPINDLE HEAD	1	
19	886-087	SPINDLE	1	
20	992-912	O-RING (S-8)	1	
21	981-317	O-RING (S-4)	2	
22	884-521	BUSHING	1	
23	875-638	O-RING (S-12)	3	
24	884-520	SPRING D4.2	1	
25	884-519	LOCK PIN	1	
26	884-503	VALVE RUBBER	1	
27	996-363	O-RING (S-40)	1	
28	884-502	SLEEVE VALVE	1	
29	983-852	O-RING (S-42)	1	
30	984-483	O-RING (S-36)	1	
31	882-221	VALVE SPRING	1	
32	886-561	CASING (B) GOLD	1	
33	886-117	PROTECTOR	1	
34		HITACHI LABEL	1	
35	886-235	PROTECTOR (A)	1	
36	886-234	FLAT FILLISTER HD. SCREW M4	2	
37	884-512	FEATHER KEY	2	
38	884-511	PIN	1	
39	884-510	SLIDER	1	
40	315-382	O-RING (P-8)	1	
41	886-086	PISTON (B)	1	
42	884-509	O-RING (I.D. 16.8)	1	
43	886-227	PISTON O-RING	1	
44	886-085	PISTON (A)	1	
45	884-507	O-RING (I.D. 10.8)	1	
46	884-480	+ DRIVER BIT NO. 2	1	
47	884-501	METAL	1	
48	884-500	WASHER	1	
49	884-498	O-RING (I.D. 31.2)	2	
50	886-083	CYLINDER	1	

PARTS

WF 4H2

ITEM NO.	CODE NO.	DESCRIPTION	NO. USED	REMARKS
51	884-499	O-RING (I.D. 24.7)	1	
52	955-479	RETAINING RING (E-TYPE) FOR D6 SHAFT	1	
53	886-562	BODY ASS'Y (GOLD)	1	INCLUD. 102
54	881-846	ADJUSTER SHAFT	1	
55	886-101	LATCH	1	
56	316-389	PUSHING LEVER GUIDE	1	
57	886-229	O-RING	1	
58	886-230	PISTON BUMPER	1	
59	306-353	O-RING (S-22)	1	
60	315-500	MACHINE SCREW (W/WASHER) M4 X 8 (BLACK)	1	
61	887-975	COVER	1	
62	886-104	NOSE	1	
63	949-755	HEX. SOCKET HD. BOLT M6 X 16 (10 PCS.)	2	
64	886-111	VERTICAL GUIDE (B)	1	
65	884-533	SPRING (A)	2	
66	884-534	SPRING (B)	2	
67	886-233	URETHANE SHAFT	2	
68	949-518	ROLL PIN D3 X 18 (10 PCS.)	1	
69	877-826	FEEDER SHAFT RING	4	
70	884-527	FEEDER	1	
71	882-236	FEEDER SHAFT	1	
72	886-110	VERTICAL GUIDE (A)	1	
73	886-109	PUSHING LEVER (A)	1	
74	886-103	NOSE CAP	1	
75	872-470	O-RING (S-26)	1	
76	886-119	SEPARATER	1	
77	884-847	VALVE (H)	1	
78	884-848	SPRING (I.D. D13)	1	
79	872-767	O-RING (S-32)	1	
80	887-983	CAP (R)	1	
81	886-079	MUFFLER	1	
82	886-080	MESH	1	
83		LABEL (B)	1	
84	886-081	EXHAUST COVER	1	
85	940-178	WASHER M5.5	4	
86	949-664	HEX. SOCKET HD. BOLT M5 X 30 (10 PCS.)	2	
87	877-914	DUST CAP	1	
88	883-135	AIR PLUG L-PT 1/4	1	
89	886-082	HEX. SOCKET HD. BOLT M5 X 40	2	
90	874-759	RETAINING RING (E-TYPE) FOR D2.5 SHAFT	1	
91	886-078	O-RING (I.D. 1.8)	1	
92	886-077	SPRING D8.4	1	
93	884-861	O-RING (I.D 4.8)	3	
94	886-076	PLUNGER (R)	1	
95	959-148	STEEL BALL D3.175 (10 PCS.)	1	
96	882-923	LOCK SPRING	1	
97	886-075	KNOB	1	
98	886-122	RELIEF VALVE	1	
99	884-852	SPRING D6.6	1	
100	886-121	SPACER	1	

PARTS

WF 4H2

ITEM NO.	CODE NO.	DESCRIPTION	NO. USED	REMARKS
101	949-861	ROLL PIN D2 X 12 (10 PCS.)	1	
102		GRIP RUBBER (A)	1	SUPPLIED WITH ITEM NO. 601, 602
103		CAUTION PLATE (C)	1	
104	884-484	PACKING (D)	1	
105	886-240	EXHAUST PIPE	1	
106	886-563	CAP (A) GOLD	1	
107	886-071	SPRING	1	
108	873-570	O-RING (P-18)	1	
109	886-072	PISTON (R)	1	
110	997-392	O-RING (1AP-24)	1	
111	877-699	HEAD VALVE O-RING (I.D 16.8)	1	
112	882-925	VALVE BUSHING (B)	1	
113	878-885	O-RING (S-18)	1	
114	878-925	O-RING (I.D 8.8)	2	
115	880-672	VALVE PISTON (B)	1	
116	878-887	O-RING (I.D 11)	1	
117	878-884	PLUNGER SPRING	1	
118	880-673	PLUNGER (A)	1	
119	878-888	O-RING (I.D. 1.8)	1	
120	882-920	VALVE BUSHING (A)	1	
121	880-734	MACHINE SCREW (W/WASHERS) M5 X 25 (BLACK)	1	
122	949-864	ROLL PIN D3 X 22 (10 PCS.)	1	
123	949-539	ROLL PIN D3 X 25 (10 PCS.)	3	
124	959-155	STEEL BALL D3.97 (10 PCS.)	1	
125	982-454	SPRING (C)	1	
126	886-102	CHANGE KNOB	1	
127	880-674	TRIGGER (A)	1	
128	949-429	BOLT WASHER M4 (10 PCS.)	1	
129	887-949	ADJUSTER SPRING	1	
130	886-228	ROLL PIN D1.6 X 10	1	
131	887-948	ADJUSTER KNOB	1	
132	881-882	SPRING	1	
133	886-099	PUSHING LEVER (B)	1	
134	886-564	ADJUSTER	1	
135	878-279	WASHER	1	
136	874-436	O-RING (P-4)	1	
137	873-570	O-RING (P-18)	1	
138	880-409	SPRING D11.8	1	
139	877-476	DAMPER	1	
140	886-112	GUIDE SHAFT	2	
141	887-196	Y-PACKING	1	
142	882-235	SPRING D4.7	1	
143	886-231	FEED PISTON	1	
144	886-106	GUARD	1	
145		LABEL (A)	1	
146	887-174	WARNING LABEL	1	
147	887-175	WARNING LABEL	1	
148	880-177	MAGAZINE BUSHING	1	
149	983-748	RETAINING RING FOR D24 HOLE	1	
150	880-170	FEED PISTON COVER	1	

